

APP CRS	Rwy Idg <b>11397</b>
<b>092°</b>	TDZE <b>7</b>
	Apt Elev <b>8</b>

# RNAV (GPS) RWY 9

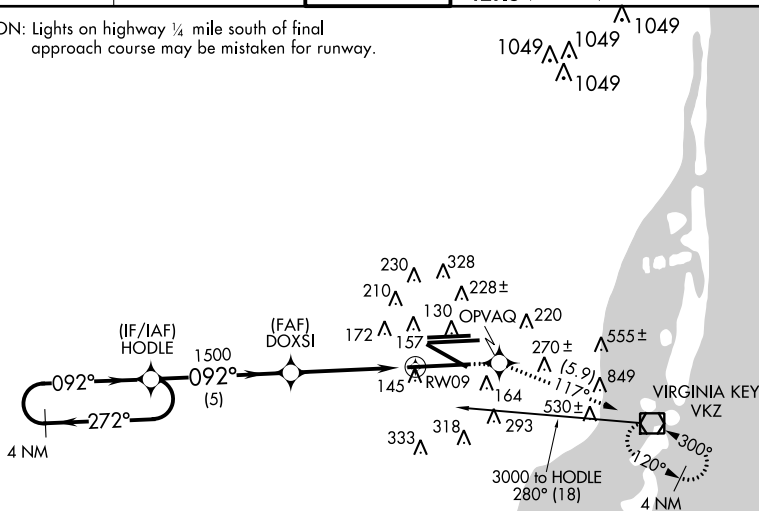
MIAMI INTL (MIA)

**NA** Baro-VNAV NA below -15°C (5°F). GPS or RNP-0.3 Required. DME/DME RNP-0.3 NA. Simultaneous approach authorized with ILS or LOC Rwy 8R. LNAV procedure NA during simultaneous operations. Use of FD or AP providing RNAV track guidance required during simultaneous operations.

**MALSR** MISSED APPROACH: Climb to 3000 direct OPVAQ WP and 117° track to VKZ VOR/DME and hold.

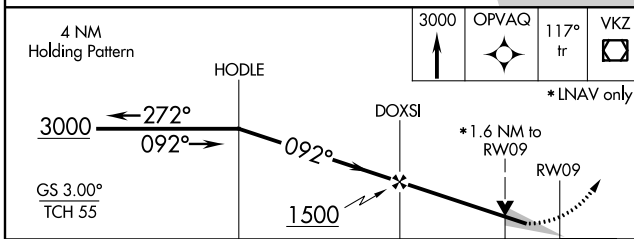
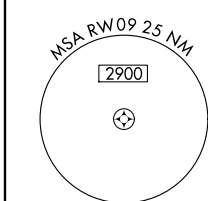
ATIS <b>119.15</b>	MIAMI APP CON <b>124.85 322.3</b>	MIAMI TOWER <b>118.3 256.9</b>	GND CON <b>121.8</b> (8L/8R/12/26L/26R) <b>127.5</b> (9/27/30)	<b>348.6</b>	CLNC DEL <b>135.35</b>
-----------------------	--------------------------------------	-----------------------------------	--	--------------	---------------------------

CAUTION: Lights on highway ¼ mile south of final approach course may be mistaken for runway.

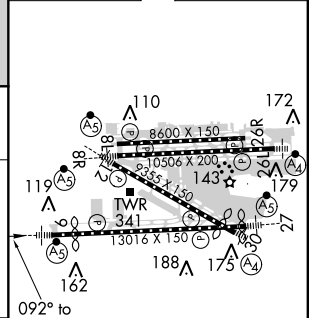


SE-3, 07 FEB 2013 to 07 MAR 2013

SE-3, 07 FEB 2013 to 07 MAR 2013



ELEV <b>8</b>	<b>D</b> TDZE <b>7</b>
---------------	------------------------



CATEGORY	A	B	C	D	E
GLS DA	NA				
LNAV/VNAV DA	420/50 413 (500-1)				
LNAV MDA	560/24	553 (600-½)	560/50	560/60	560-1½
CIRCLING	NA				

TDZ/CL Rwy 8R  
REIL Rwy 8L and 26R  
HIRL all Rwy 9