

MIAMI, FLORIDA

AL-257 (FAA)

WAAS CH 86903 W26A	APP CRS 272°	Rwy Idg TDZE Apt Elev	8600 8 8
---------------------------------	------------------------	-----------------------------	-------------------------------------

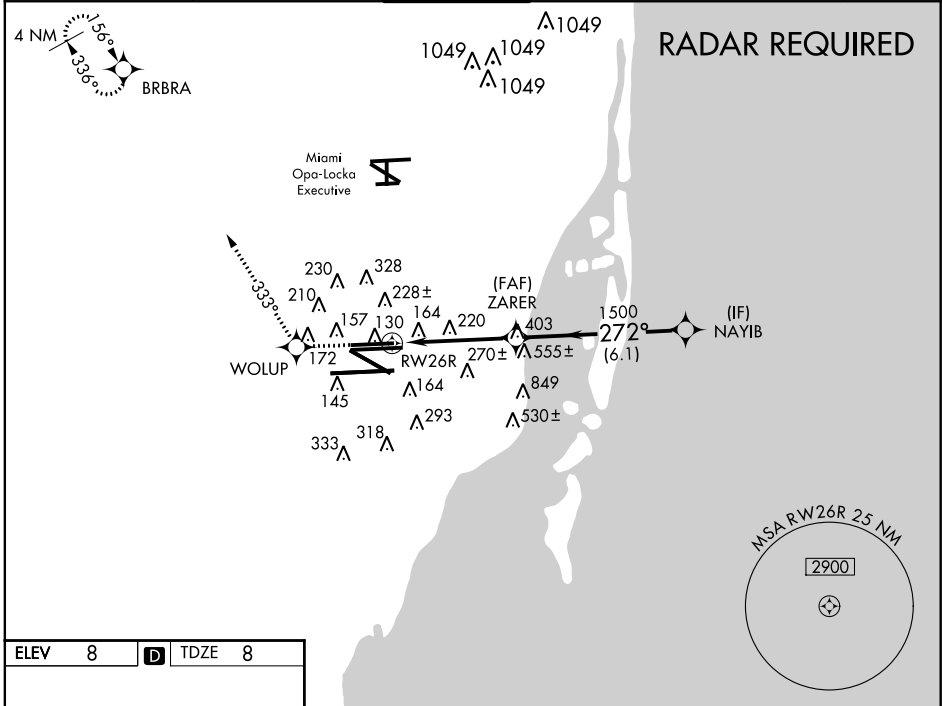
RNAV (GPS) RWY 26R

MIAMI INTL (MIA)

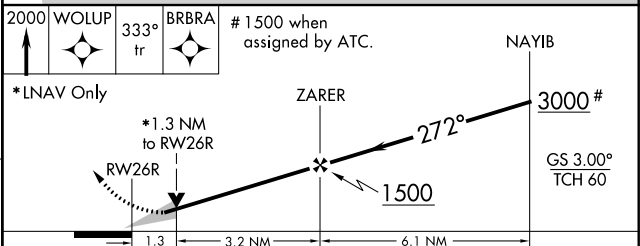
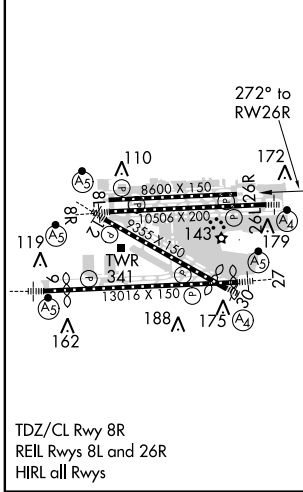
V For uncompensated Baro-VNAV systems, LNAV/VNAV NA below -15°C (5°F) or above 48°C (118°F).
W DME/DME RNP-0.3 NA.

MISSED APPROACH: Climb to 2000 direct WOLUP and via 333° track to BRBRA and hold.

ATIS 119.15	MIAMI APP CON 124.85 322.3	MIAMI TOWER 118.3 256.9	GND CON 121.8 (8L/8R/12/26L/26R) 127.5 (9/27/30)	348.6	CLNC DEL 135.35
-----------------------	--------------------------------------	-----------------------------------	--	--------------	---------------------------



ELEV 8	D	TDZE 8
--------	----------	--------



CATEGORY	A	B	C	D
LPV DA	298-1 290 (300-1)			
LNAV/VNAV DA	460-1½ 452 (500-1½)			
LNAV MDA	480-1	472 (500-1)	480-1¼ 472 (500-1¼)	480-1½ 472 (500-1½)
CIRCLING	NA			

MIAMI, FLORIDA
Amdt 1 13010

25°48'N-80°17'W

RNAV (GPS) RWY 26R

MIAMI INTL (MIA)

SE-3, 07 FEB 2013 to 07 MAR 2013

SE-3, 07 FEB 2013 to 07 MAR 2013