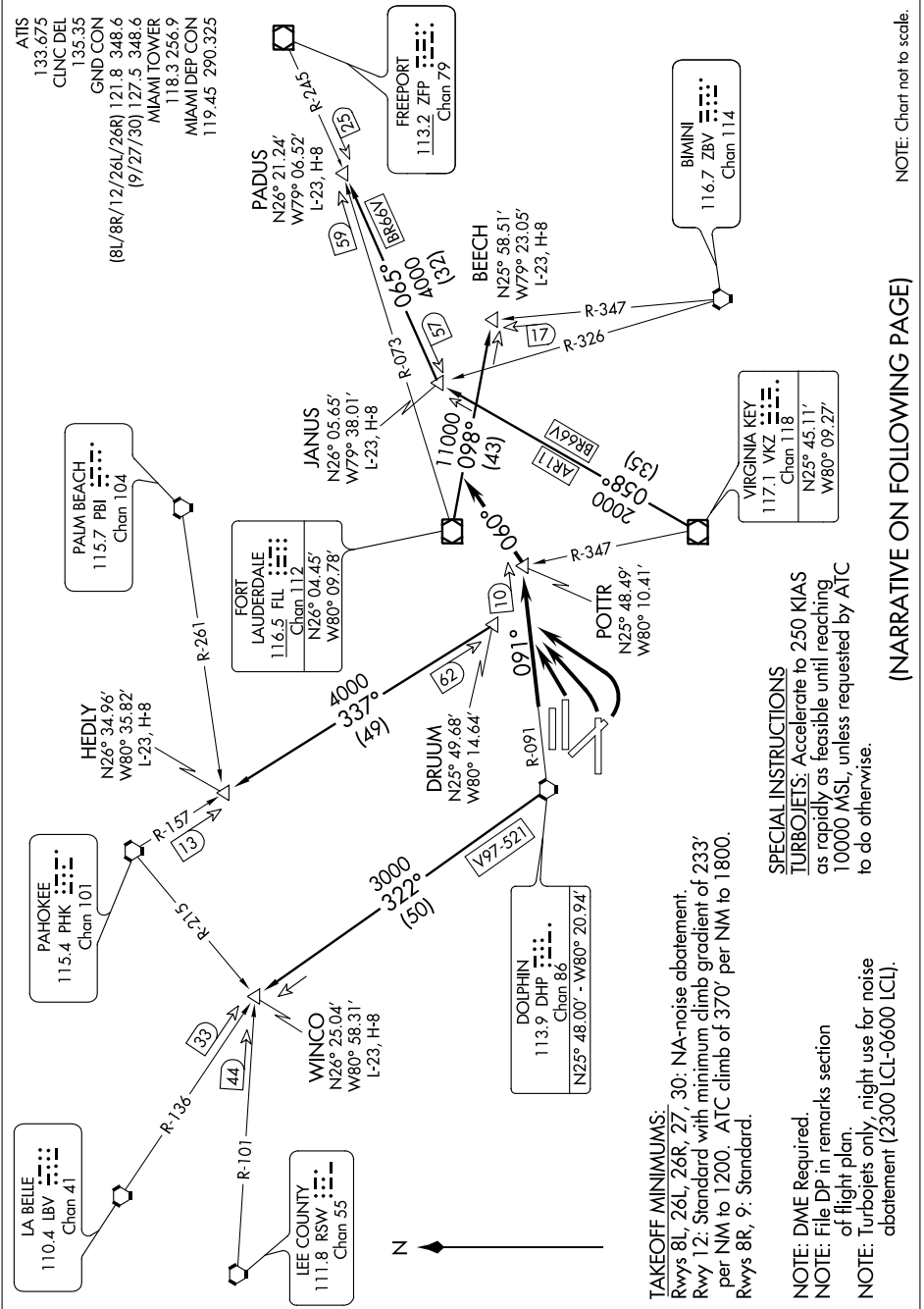


(POTTR4.POTTR) 11013  
**POTTR FOUR DEPARTURE**

SL-257 (FAA)

MIAMI INTL (MIA)  
 MIAMI, FLORIDA

SE-3, 07 FEB 2013 to 07 MAR 2013



ATIS  
 133.675  
 CLINC DEL  
 135.35  
 GND CON  
 (8L/8R/12/26L/26R) 121.8 348.6  
 (9/27/30) 127.5 348.6  
 MIAMI TOWER  
 118.3 256.9  
 MIAMI DEP CON  
 119.45 290.325

PALM BEACH  
 115.7 PBI  
 Chan 104

FORT LAUDERDALE  
 116.5 FLL  
 Chan 112  
 N26° 04.45'  
 W80° 09.78'

FREERPORT  
 113.2 ZFP  
 Chan 79

BIMINI  
 116.7 ZBV  
 Chan 114

VIRGINIA KEY  
 117.1 VKZ  
 Chan 118  
 N25° 45.11'  
 W80° 09.27'

NOTE: Chart not to scale.

(NARRATIVE ON FOLLOWING PAGE)

SE-3, 07 FEB 2013 to 07 MAR 2013

(POTTR4.POTTR) 11013  
**POTTR FOUR DEPARTURE**



**TAKEOFF MINIMUMS:**  
 Rwy 8L, 26L, 26R, 27, 30: NA-noise abatement.  
 Rwy 12: Standard with minimum climb gradient of 233' per NM to 1200. ATC climb of 370' per NM to 1800.  
 Rwy 8R, 9: Standard.

**SPECIAL INSTRUCTIONS**  
**TURBOJET:** Accelerate to 250 KIAS as rapidly as feasible until reaching 10000 MSL, unless requested by ATC to do otherwise.

**NOTE:** DME Required.  
**NOTE:** File DP in remarks section of flight plan.  
**NOTE:** Turbojets only, night use for noise abatement (2300 LCL-0600 LCL).

MIAMI, FLORIDA  
 MIAMI INTL (MIA)