

MIAMI, FLORIDA

AL-257 (FAA)

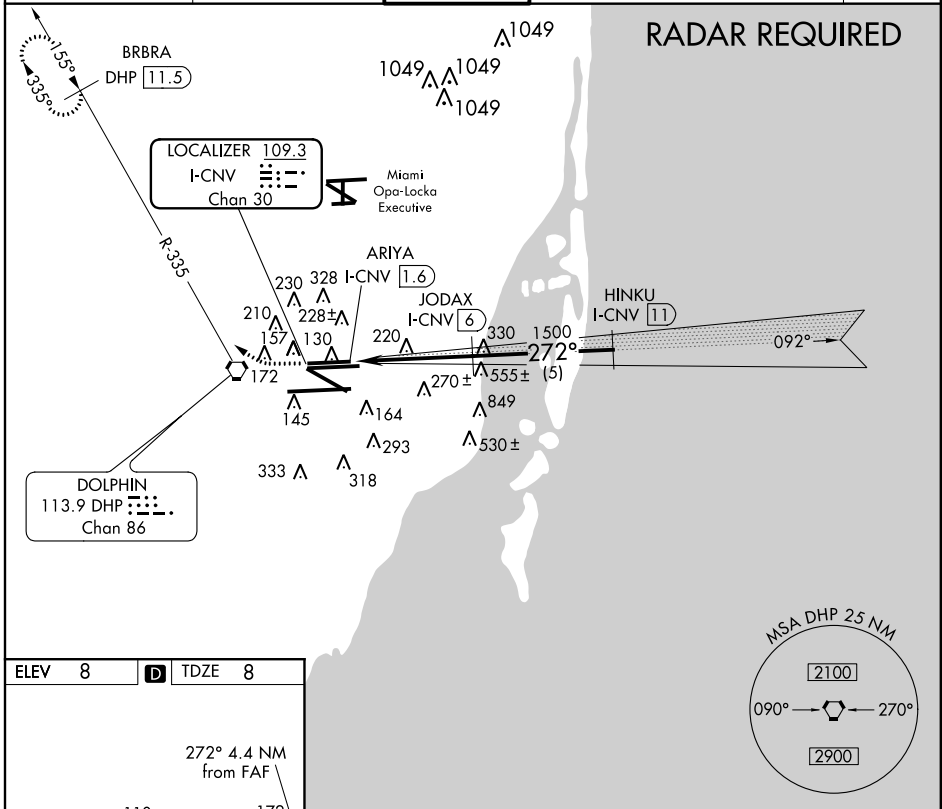
# LOC/DME RWY 26R

MIAMI INTL (MIA)

LOC/DME I-CNV <b>109.3</b> Chan 30	APP CRS <b>272°</b>	Rwy Idg TDZE Apt Elev	<b>8600</b> <b>8</b> <b>8</b>
--	------------------------	-----------------------------	-------------------------------------

MISSED APPROACH: Climb to 800 then climbing right turn to 2000 via heading 290° and DHP R-335 to BRBRA/11.5 DME and hold.

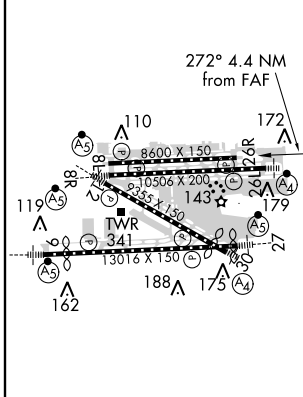
ATIS <b>119.15</b>	MIAMI APP CON <b>124.85 322.3</b>	MIAMI TOWER <b>118.3 256.9</b>	GND CON <b>121.8</b> (8L/8R/12/26L/26R) <b>127.5</b> (9/27/30)	CLNC DEL <b>348.6</b> <b>135.35</b>
-----------------------	--------------------------------------	-----------------------------------	--	---



SE-3, 07 FEB 2013 to 07 MAR 2013

SE-3, 07 FEB 2013 to 07 MAR 2013

ELEV 8	<b>D</b>	TDZE 8
--------	----------	--------



TDZ/CL Rwy 8R REIL Rwy 8L and 26R HIRL all Rwy
--

CATEGORY	A	B	C	D
S-26R	480-1	472 (500-1)	480-1¼ 472 (500-1¼)	480-1½ 472 (500-1½)
CIRCLING	NA			

MIAMI, FLORIDA  
Orig-B 13010

25°48'N - 80°17'W

# MIAMI INTL (MIA) LOC/DME RWY 26R