

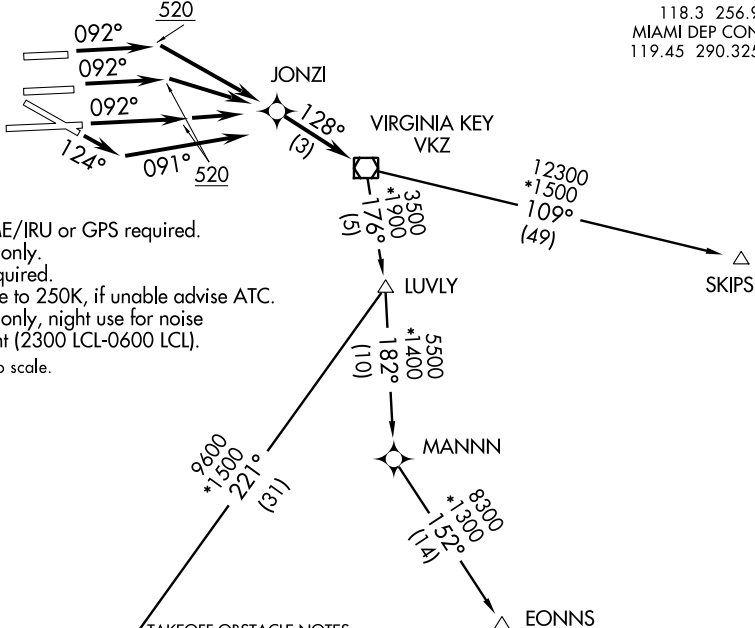
JONZI ONE DEPARTURE (RNAV)

TAKEOFF MINIMUMS:

Rwys 8L, 8R, 9, 12: Standard with minimum climb of 500' per NM to 520.

Rwys 26L, 26R, 27, 30: NA per ATC.

ATIS 133.675
CLNC DEL 135.35
GND CON
(Rwys 8L/8R/12/26L/26R) 121.8 348.6
(9/27/30) 127.5 348.6
MIAMI TOWER
118.3 256.9
MIAMI DEP CON
119.45 290.325



- NOTE: RNAV 1.
- NOTE: DME/DME/IRU or GPS required.
- NOTE: Turbojets only.
- NOTE: Radar required.
- NOTE: Accelerate to 250K, if unable advise ATC.
- NOTE: Turbojets only, night use for noise abatement (2300 LCL-0600 LCL).
- NOTE: Chart not to scale.

TAKEOFF OBSTACLE NOTES:

- Rwy 8L: Multiple buildings with antennas and towers beginning 1350' from DER, 690' left of centerline, up to 160' AGL/172' MSL.
- Rwy 8R: Tree 4064' from DER, 958' right of centerline, 93' AGL/112' MSL. Multiple powerlines, antennas and trees beginning 1856' from DER, 238' left of centerline, up to 150' AGL/153' MSL. Navaid and rod on OL GS 804' from DER, 500' right of centerline, 46' MSL.
- Rwy 9: Light windsock 21' from DER, 437' right of centerline, 21' AGL/30' MSL. Pole 702' from DER, 600' right of centerline, 21' AGL/38' MSL. Antenna 4035' from DER, 1528' right of centerline, 108' AGL/125' MSL. Electrical system 1231' from DER, 785' left of centerline, 32' AGL/48' MSL.
- Rwy 12: Train 3' from DER, 436' right of runway, 23' AGL/51' MSL. Antenna 2917' from DER, 1140' right of centerline, 89' AGL/106' MSL. Antenna on building 3164' from DER, 992' right of centerline, 91' AGL/108' MSL. Trees beginning 114' from DER, 117' right of centerline, up to 20' AGL/37' MSL. Sign 1191' from DER, 438' right of centerline, 32' AGL/49' MSL. Windsock 680' from DER 345' left of centerline, 16' AGL/30' MSL.

DEPARTURE ROUTE DESCRIPTION

TAKEOFF RUNWAYS 8L, 8R, 9: Climb heading 092° to 520, then direct JONZI, then on depicted route to VKZ VOR/DME. Thence....

TAKEOFF RUNWAY 12: Climb heading 124° to intercept course 091° to JONZI, then on depicted route to VKZ VOR/DME. Thence....

...Via transition or assigned route, maintain 5000 or ATC assigned altitude. Expect further clearance to filed altitude within 10 minutes after departure.

EONNS TRANSITION (JONZI1 .EONNS):

MNATE TRANSITION (JONZI1 .MNATE):

SKIPS TRANSITION (JONZI1 .SKIPS):

JONZI ONE DEPARTURE (RNAV)

SE-3, 07 FEB 2013 to 07 MAR 2013

SE-3, 07 FEB 2013 to 07 MAR 2013