

(HEDLY1.HEDLY) 12152

SL-257 (FAA)

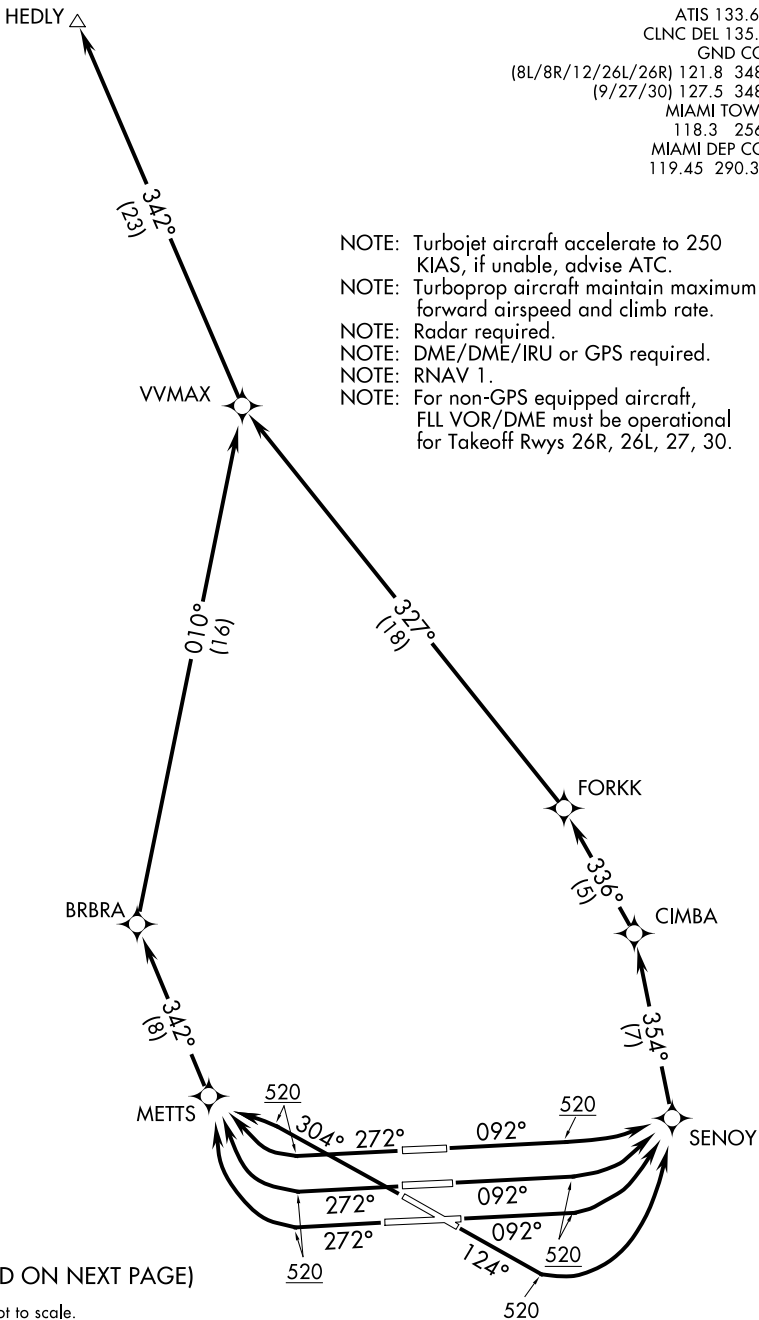
MIAMI INTL (MIA)

MIAMI, FLORIDA

HEDLY ONE DEPARTURE (RNAV)

ATIS 133.675
 CLNC DEL 135.35
 GND CON
 (8L/8R/12/26L/26R) 121.8 348.6
 (9/27/30) 127.5 348.6
 MIAMI TOWER
 118.3 256.9
 MIAMI DEP CON
 119.45 290.325

- NOTE: Turbojet aircraft accelerate to 250 KIAS, if unable, advise ATC.
- NOTE: Turboprop aircraft maintain maximum forward airspeed and climb rate.
- NOTE: Radar required.
- NOTE: DME/DME/IRU or GPS required.
- NOTE: RNAV 1.
- NOTE: For non-GPS equipped aircraft, FLL VOR/DME must be operational for Takeoff Rwy's 26R, 26L, 27, 30.



(CONTINUED ON NEXT PAGE)

NOTE: Chart not to scale.

SE-3, 07 FEB 2013 to 07 MAR 2013

SE-3, 07 FEB 2013 to 07 MAR 2013

HEDLY ONE DEPARTURE (RNAV)

(HEDLY1.HEDLY) 12152

MIAMI, FLORIDA
MIAMI INTL (MIA)