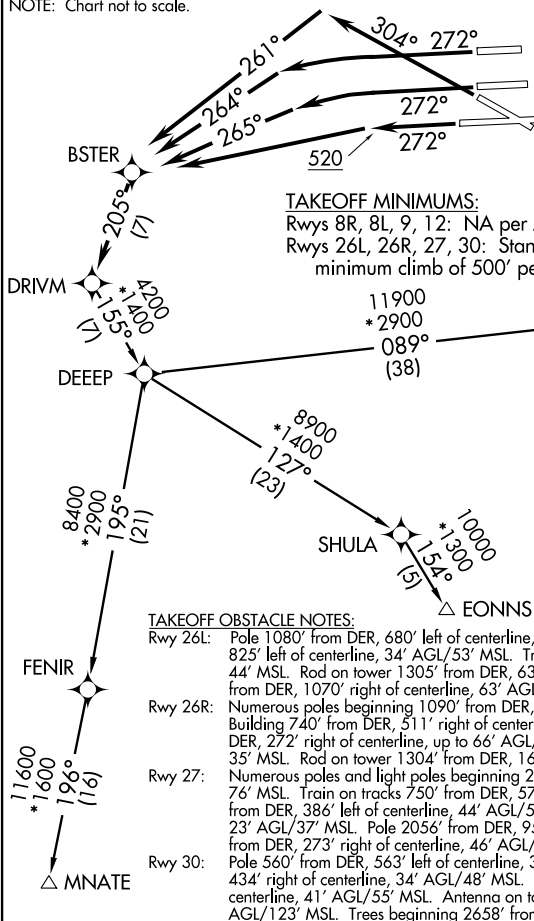


DEEP ONE DEPARTURE (RNAV)

NOTE: Chart not to scale.



ATIS 133.675
CLNC DEL 135.35
GND CON
(Rwys 8L/8R/12/26L/26R) 121.8 348.6
(Rwys 9/27/30) 127.5 348.6
MIAMI TOWER
118.3 256.9
MIAMI DEP CON
119.45 290.325

NOTE: RNAV 1.
NOTE: DME/DME/IRU or GPS required.
NOTE: Turbojets only.
NOTE: Radar required.
NOTE: Accelerate to 250K, if unable advise ATC.
NOTE: Turbojets only, night use for noise abatement (2300 LCL-0600 LCL).

TAKEOFF OBSTACLE NOTES:

Rwy 26L: Pole 1080' from DER, 680' left of centerline, 33' AGL/47' MSL. Light pole 1773' from DER, 825' left of centerline, 34' AGL/53' MSL. Tree 1405' from DER, 848' left of centerline, 30' AGL/44' MSL. Rod on tower 1305' from DER, 638' right of centerline, 34' AGL/48' MSL. Tree 2459' from DER, 1070' right of centerline, 63' AGL/71' MSL.
Rwy 26R: Numerous poles beginning 1090' from DER, 36' right of centerline, up to 44' AGL/59' MSL. Building 740' from DER, 511' right of centerline, 14' MSL/28' MSL. Trees beginning 1047' from DER, 272' right of centerline, up to 66' AGL/80' MSL. Tree 888' from DER, on centerline, 21' AGL/35' MSL. Rod on tower 1304' from DER, 160' left of centerline, 34' AGL/48' MSL.
Rwy 27: Numerous poles and light poles beginning 2056' from DER, 93' left of centerline up to 62' AGL/76' MSL. Train on tracks 750' from DER, 576' left of centerline, 23' AGL/53' MSL. Sign 2005' from DER, 386' left of centerline, 44' AGL/58' MSL. Tree 1067' from DER, 680' left of centerline, 23' AGL/37' MSL. Pole 2056' from DER, 95' right of centerline, 46' AGL/60' MSL. Pole 2067' from DER, 273' right of centerline, 46' AGL/60' MSL.
Rwy 30: Pole 560' from DER, 563' left of centerline, 33' AGL/47' MSL. Rod on tower 2451' from DER, 434' right of centerline, 34' AGL/48' MSL. Antenna on tower 1773' from DER, 911' right of centerline, 41' AGL/55' MSL. Antenna on tower 4427' from DER, 1451' right of centerline, 109' AGL/123' MSL. Trees beginning 2658' from DER, 188' right of centerline, up to 63' AGL/77' MSL.

DEPARTURE ROUTE DESCRIPTION

TAKEOFF RUNWAY 26L: Climb heading 272° to intercept course 265° to BSTER, then on depicted route to DRIVM, thence....
TAKEOFF RUNWAY 26R: Climb heading 272° to intercept course 264° to BSTER, then on depicted route to DRIVM, thence....
TAKEOFF RUNWAY 27: Climb heading 272° to 520, then direct BSTER, then on depicted route to DRIVM, thence....
TAKEOFF RUNWAY 30: Climb heading 304° to intercept course 261° to BSTER, then on depicted route to DRIVM, thence....
Via transition or assigned route, maintain 5000 or ATC assigned altitude. Expect further clearance to filed altitude within 10 minutes after departure.

EONNS TRANSITION (DEEEP1.EONNS):
MNATE TRANSITION (DEEEP1.MNATE):
SKIPS TRANSITION (DEEEP1.SKIPS):

DEEP ONE DEPARTURE (RNAV)

(DEEEP1.DEEP) 12264