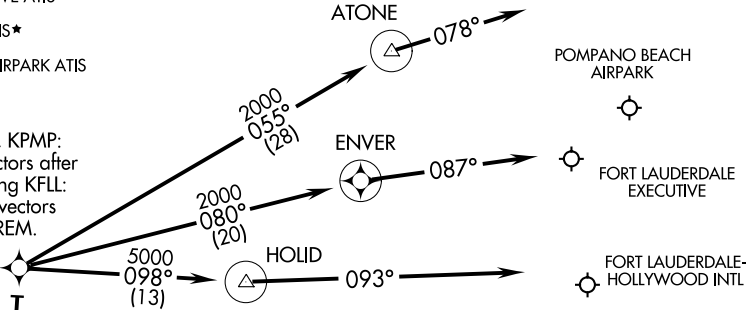


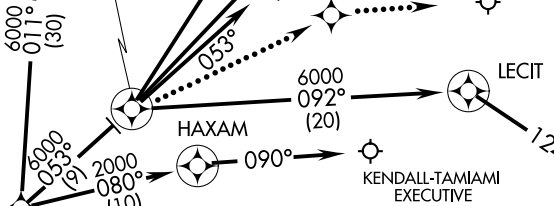
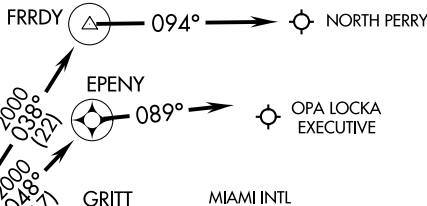
# CURSO TWO ARRIVAL (RNAV) (Arrival Routes)

MIAMI APP CON  
124.85 322.3  
MIAMI INTL ATIS  
119.15  
FORT LAUDERDALE-HOLLYWOOD INTL ATIS  
135.0  
FORT LAUDERDALE EXECUTIVE ATIS  
119.85  
KENDALL TAMIAMI-EXECUTIVE ATIS  
124.0  
NORTH PERRY ATIS  
135.475  
OPA LOCKA EXECUTIVE ATIS  
125.9  
HOMESTEAD ARB ATIS\*  
132.275 269.9  
POMPANO BEACH AIRPARK ATIS  
120.55

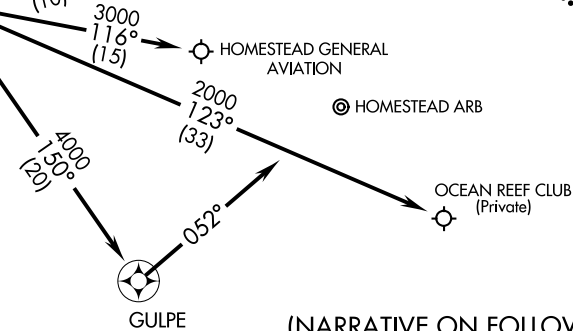
**JAREM**  
Landing KFXE, KPMP:  
Expect radar vectors after  
JAREM. Landing KFLL:  
Expect radar vectors  
prior to JAREM.



**JODPO**  
KMIA Landing East:  
Expect radar vectors  
prior to JODPO. Landing KOPF,  
KHWO: expect  
radar vectors  
prior to JODPO.



**MNNNDY**  
Landing KTMB,  
KHST, K07FA, KX51:  
Expect radar vectors  
after MNNNDY.



NOTE: Chart not to scale.

(NARRATIVE ON FOLLOWING PAGE)

SE-3, 07 FEB 2013 to 07 MAR 2013

SE-3, 07 FEB 2013 to 07 MAR 2013