

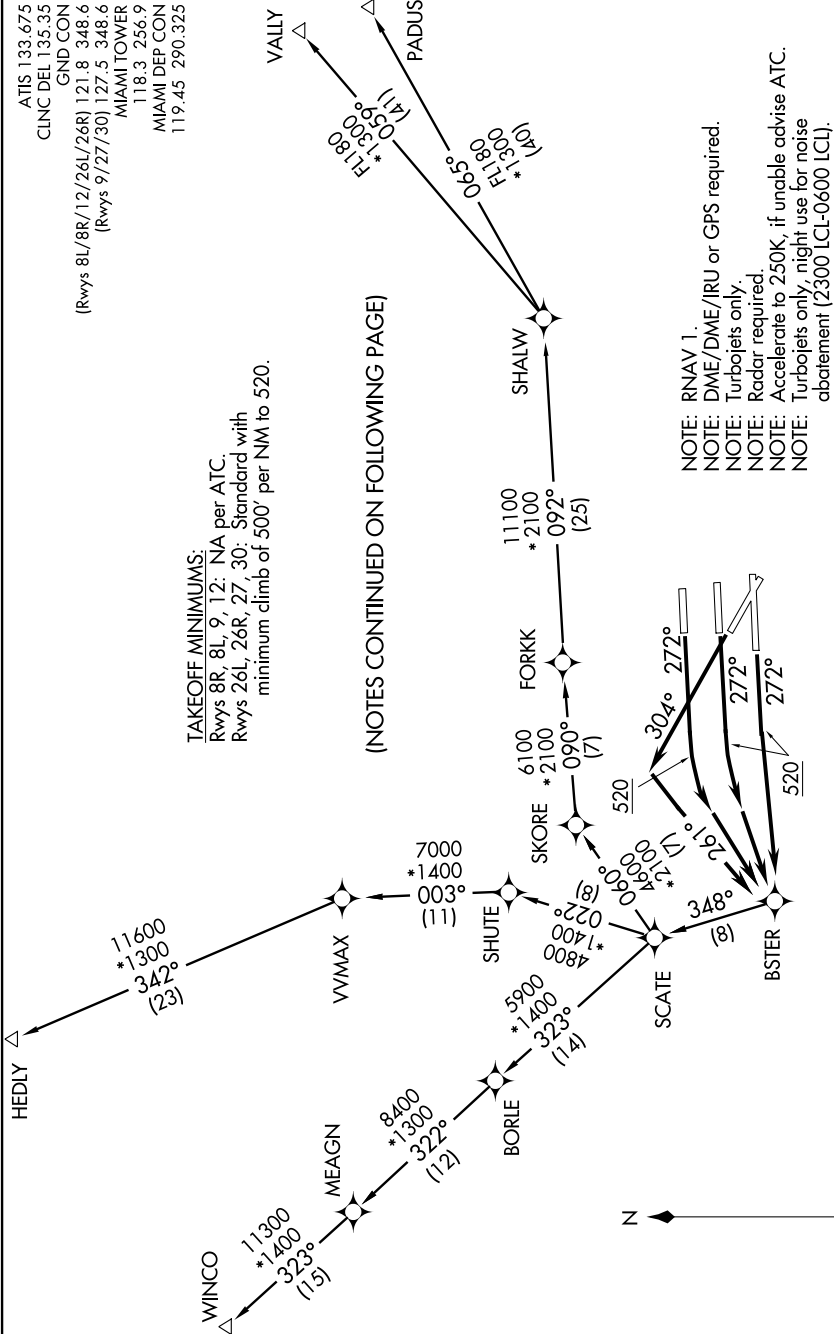
BSTER ONE DEPARTURE (RNAV)

ATIS 133.675
 CLNC DEL 135.35
 GND CON
 (Rwys 8L/8R/12/26L/26R) 121.8 348.6
 (Rwys 9/27/30) 127.5 348.6
 MIAMI TOWER
 118.3 256.9
 MIAMI DEP CON
 119.45 290.325

TAKEOFF MINIMUMS:
 Rwys 8R, 8L, 9, 12: NA per ATC.
 Rwys 26L, 26R, 27, 30: Standard with
 minimum climb of 500' per NM to 520.

(NOTES CONTINUED ON FOLLOWING PAGE)

NOTE: RNAV 1.
 NOTE: DME/DME/IRU or GPS required.
 NOTE: Turbojets only.
 NOTE: Radar required.
 NOTE: Accelerate to 250K, if unable advise ATC.
 NOTE: Turbojets only, night use for noise
 abatement (2300 LCL-0600 LCL).



(NARRATIVE ON FOLLOWING PAGE)

NOTE: Chart not to scale.