

WAAS CH <b>53422</b> <b>W09A</b>	APP CRS <b>093°</b>	Rwy Idg THRE Apt Elev <b>8</b>	<b>8002</b> <b>7</b> <b>8</b>
--	------------------------	---	-------------------------------------

# RNAV (GPS) RWY 9L

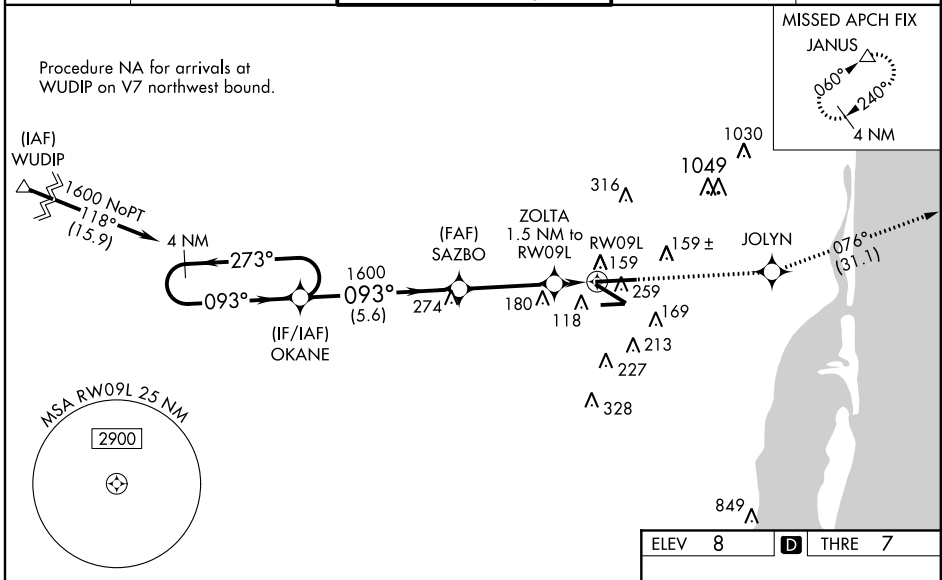
MIAMI/OPA-LOCKA EXECUTIVE (OPF)

**▼** Baro-VNAV NA when using Miami Inlt altimeter setting. For uncompensated Baro-VNAV systems, LNAV/VNAV NA below -15°C (5°F) or above 43°C (109°F). DME/DME RNP-0.3 NA. Visibility reduction by helicopters NA. When local altimeter setting not received, use Miami Inlt altimeter setting and increase all DA/MDA 20 feet. For inoperative MALSRS, increase LNAV/VNAV all Cats visibility to 1 mile, LNAV Cats A and B visibility to 1 mile and Cats C and D visibility to 1½ miles. For inoperative MALSRS, when using Miami Inlt altimeter setting, increase LPV all Cats visibility to ¾ mile, LNAV/VNAV all Cats visibility to 1½ miles and LNAV Cats A and B visibility to 1 mile. Inoperative table does not apply to LPV all Cats. When VGSI inop, Circling Rwy 27R NA at night. Caution: Lights on highway 0.7 NM north may be mistaken for runway.

**MALSRS**

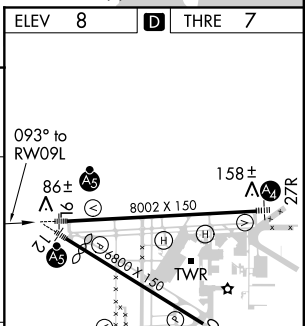
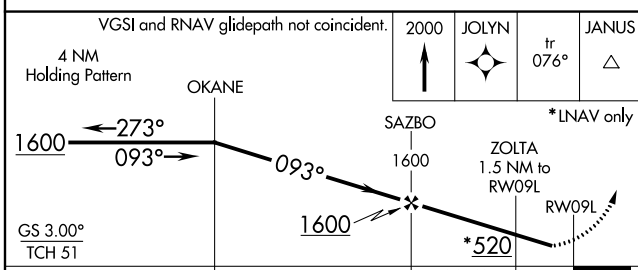
**MISSED APPROACH:**  
Climb to 2000 direct JOLYN and on track 076° to JANUS and hold.

ATIS <b>125.9</b>	MIAMI APP CON <b>128.6 306.975</b>	OPA LOCKA TOWER * <b>134.675 (CTAF) 0</b>	GND CON <b>120.025</b>	CLNC DEL <b>119.2</b>
----------------------	---------------------------------------	--	---------------------------	--------------------------



SE-3, 07 FEB 2013 to 07 MAR 2013

SE-3, 07 FEB 2013 to 07 MAR 2013



CATEGORY	A	B	C	D
LPV DA		257-¾	250 (300-¾)	
LNAV/ VNAV DA		320-¾	313 (400-¾)	
LNAV MDA		420-¾	413 (500-¾)	
CIRCLING	540-1	532 (600-1)	540-1½ 532 (600-1½)	560-2 552 (600-2)

MIRL Rwy 9R-27L  
HIRL Rws 9L -27R and 12-30