

WAAS CH 69522 W12A	APP CRS 128°	Rwy Idg THRE 8 Apt Elev 8
--	------------------------	---

RNAV (GPS) RWY 12

MIAMI / OPA-LOCKA EXECUTIVE (OPF)

⚠ When VGSI inop, Circling Rwy 27R NA at night. Baro-VNAV NA when using Miami Intl altimeter setting. For uncompensated Baro-VNAV systems, LNAV/VNAV NA below -15°C (5°F) or above 43°C (109°F). DME/DME RNP-0.3 NA. Visibility reduction by helicopters NA. VDP NA with Miami Intl altimeter setting. When local altimeter setting not received, use Miami Intl altimeter setting and increase all DA/MDA 20 feet. Inoperative table does not apply. For inoperative MALSR, increase LNAV/VNAV all Cats visibility and LNAV Cats A and B to 1 mile and LNAV Cats C and D visibility to 1½ miles. For inoperative MALSR, when using Miami Intl altimeter setting, increase LNAV/VNAV all Cats visibility and LNAV Cats A and B visibility to 1 mile.

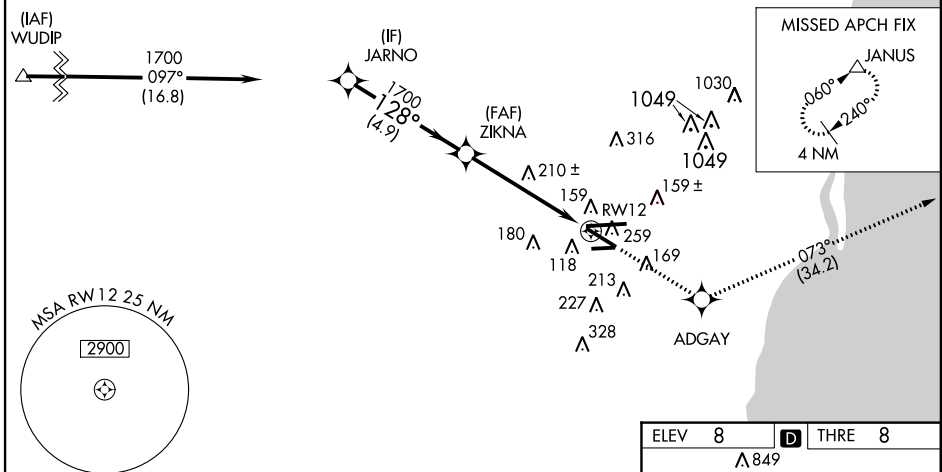
MALSR



MISSED APPROACH:
Climb to 2000 direct ADGAY and on track 073° to JANUS and hold.

ATIS 125.9	MIAMI APP CON 128.6 306.975	OPA LOCKA TOWER * 134.675(CTAF) 0	GND CON 120.025	CLNC DEL 119.2
----------------------	---------------------------------------	---	---------------------------	--------------------------

Procedure NA for arrivals at WUDIP on V7 northwest bound.



SE-3, 07 FEB 2013 to 07 MAR 2013

SE-3, 07 FEB 2013 to 07 MAR 2013

	JARNO	ZIKNA	ADGAY	JANUS
	1700	1700	2000	128° to RWY12
	128°		↑	tr 073°
	1700		✧	△
	4.9 NM		*LNAV only	
	3.7 NM		*1.5 NM to RWY12	
	1.5 NM		RWY12	
CATEGORY	A	B	C	D
LPV DA		208-¾	200 (200-¾)	
LNAV/VNAV DA		320-¾	312 (400-¾)	
LNAV MDA	520-¾	512 (600-¾)	520-1	512 (600-1)
CIRCLING	540-1	532 (600-1)	540-1½ 532 (600-1½)	560-2 552 (600-2)

