


LOC/DME I-PLJ 111.35 Chan 50 (Y)	APP CRS 273°	Rwy Idg THRE Apt Elev	8002 7 8
---	------------------------	-----------------------------	-------------------------------------

ILS or LOC RWY 27R

MIAMI / OPA-LOCKA EXECUTIVE (OPF)

⚠ DME required. Visibility reduction by helicopters NA. When VGSI inop, Straight-in/Circling Rwy 27R procedure NA at night. When local altimeter setting not received, use Miami Intl altimeter setting and increase all DA/MDA 20 feet. Inoperative table does not apply to S-ILS 27R all Cats and S-LOC 27R Cats A and B. For inoperative MALS, increase S-LOC 27R Cats C and D visibility to 1½ miles. For inoperative MALS, when using Miami Intl altimeter setting, increase S-LOC 27R Cats C and D visibility to 1¾ miles.

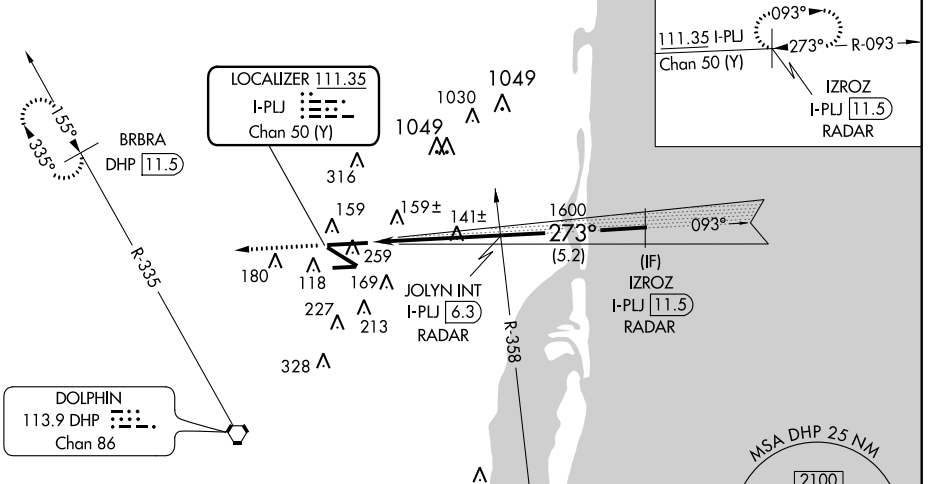
MALS



MISSED APPROACH: Climb to 2000 heading 273° and DHP VORTAC R-335 to BRBRA/DHP 11.5 DME and hold.

ATIS 125.9	MIAMI APP CON 128.6 306.975	OPA LOCKA TOWER ★ 134.675 (CTAF) 0	GND CON 120.025	CLNC DEL 119.2
----------------------	---------------------------------------	---	---------------------------	--------------------------

RADAR REQUIRED



SE-3, 07 FEB 2013 to 07 MAR 2013

SE-3, 07 FEB 2013 to 07 MAR 2013

ELEV 8	D	THRE 7
--------	----------	--------

MIRM Rwy 9R-27L
HIRL Rwys 9L-27R and 12-30 **0**

FAF to MAP 4.8 NM

273° 4.8 NM from FAF

158±

86±

8002 X 150

4309 X 100

9R

9L

12

27R

TWR

VIRGINIA KEY 117.1 VKZ Chan 118

2000

hdg 273°

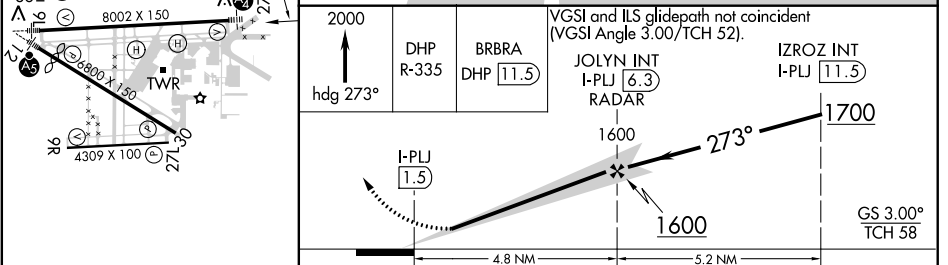
DHP R-335

BRBRA DHP 11.5

VGSI and ILS glidepath not coincident (VGSI Angle 3.00/TCH 52).

JOLYN INT I-PLJ 6.3 RADAR

IZROZ INT I-PLJ 11.5



CATEGORY	A	B	C	D
S-ILS 27R		289-1	282 (300-1)	
S-LOC 27R		400-1	393 (400-1)	
CIRCLING	540-1	532 (600-1)	540-1½ 532 (600-1½)	560-2 552 (600-2)