


LOC/DME I-OLX 111.55 Chan 52 (Y)	APP CRS 128°	Rwy Idg THRE Apt Elev	6000 8 8
---	------------------------	-----------------------------	-------------------------------------

ILS or LOC RWY 12

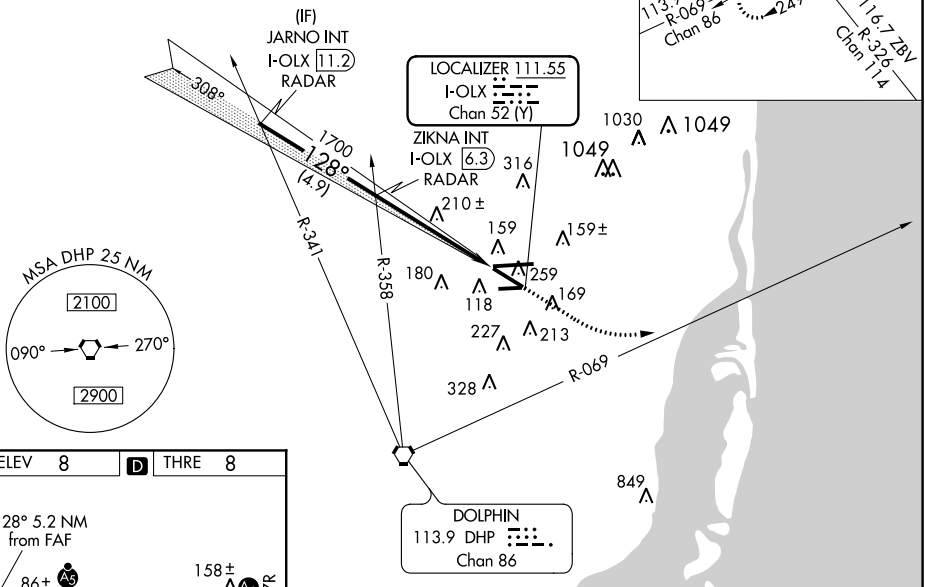
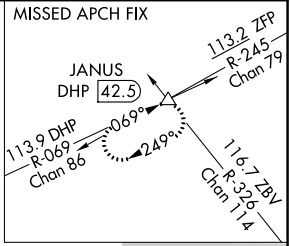
MIAMI/OPA-LOCKA EXECUTIVE (OPF)

⚠ Inoperative table does not apply to S-ILS 12. Visibility reduction by helicopters NA. VDP NA with Miami Intl altimeter setting. When VGSi inop, Circling Rwy 27R NA at night. When local altimeter setting not received, use Miami Intl altimeter setting and increase all DA/MDA 20 feet. For inoperative MALSRL, increase S-LOC 12 Cats A and B visibility to 1 mile and Cats C and D visibility to 1 1/2 miles.

MALSRL

MISSED APPROACH: Climb to 800 then climbing left turn to 2000 on heading 090° and DHP VORTAC R-069 to JANUS INT/DHP 42.5 DME and hold.

ATIS 125.9	MIAMI APP CON 128.6 306.975	OPA LOCKA TOWER * 134.675 (CTAF) 0	GND CON 120.025	CLNC DEL 119.2
----------------------	---------------------------------------	--	---------------------------	--------------------------

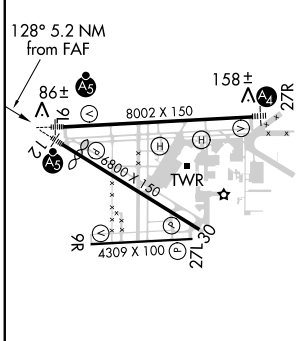
RADAR REQUIRED



SE-3, 07 FEB 2013 to 07 MAR 2013

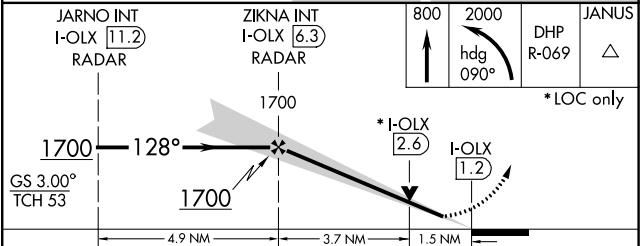
SE-3, 07 FEB 2013 to 07 MAR 2013

ELEV 8	D	THRE 8
--------	----------	--------



MIRL Rwy 9R-27L
 HIRL Rwys 9L-27R and 12-30
 FAF to MAP 5.2 NM

Knots	60	90	120	150	180
Min:Sec	5:12	3:28	2:36	2:05	1:44



CATEGORY	A	B	C	D
S-ILS 12	208-3/4 200 (200-3/4)			
S-LOC 12	520-3/4	512 (600-3/4)	520-1	512 (600-1)
CIRCLING	540-1	532 (600-1)	540-1 1/2 532 (600-1 1/2)	560-2 552 (600-2)