

VORTAC MEI <b>117.0</b> Chan <b>117</b>	APP CRS <b>130°</b>	Rwy Idg TDZE Apt Elev <b>N/A</b> <b>N/A</b> <b>297</b>
---	------------------------	---

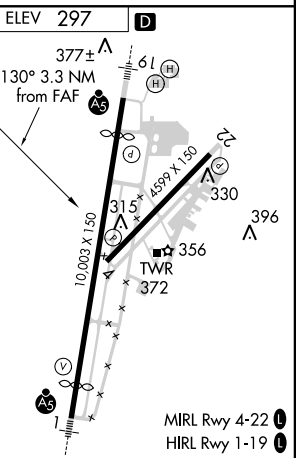
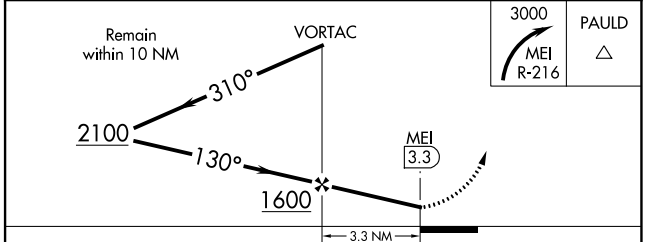
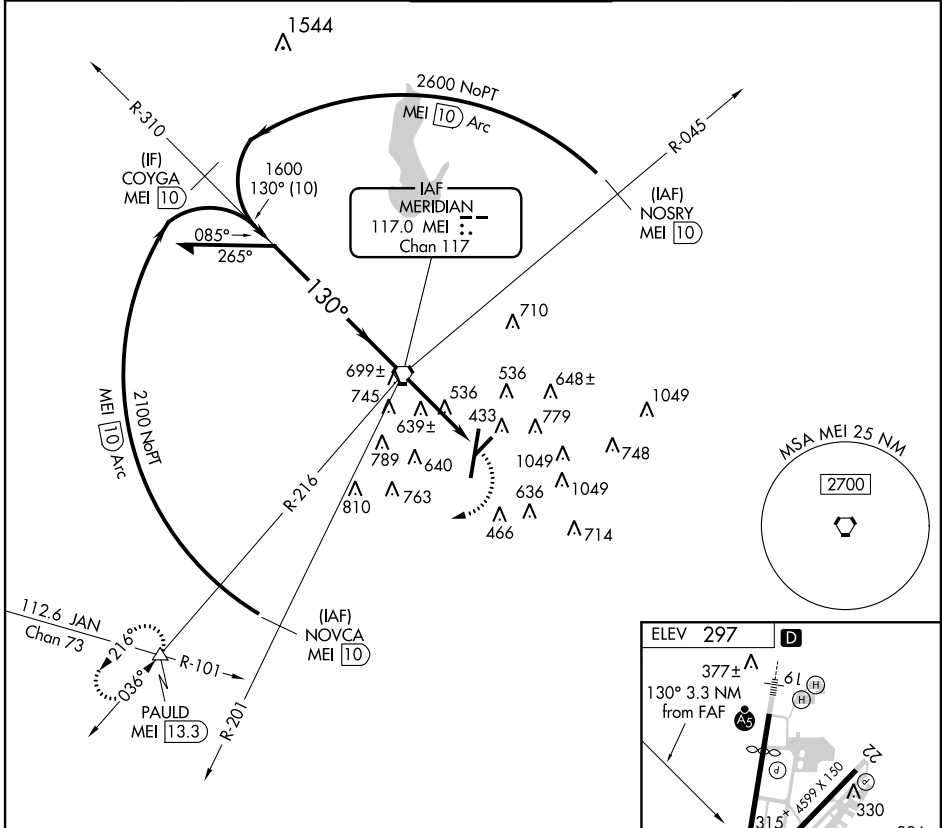
# VOR-A

MERIDIAN/KEY FIELD (MEI)

**⚠** Circling NA SE of Rws 1 and 22. Circling Rwy 22 NA at night. When local altimeter setting not received, use Hattiesburg-Laurel Rgnl altimeter setting and increase all MDA 140 feet; increase Circling Cat B ¼ mile, Cats C and D visibility ½ mile. DME Required. Procedure turn NA for Cat E.

MISSED APPROACH: Climbing right turn to 3000 via MEI R-216 to PAULD/MEI 13.3 DME and hold.

ATIS <b>126.475 291.675</b>	MERIDIAN APP CON* <b>120.5 269.6</b>	KEY TOWER* <b>119.8 (CTAF) 0 257.8</b>	GND CON <b>121.9 348.6</b>	UNICOM <b>122.95</b>
--------------------------------	---	---	-------------------------------	-------------------------



CATEGORY	A	B	C	D	E	FAF to MAP 3.3 NM					
CIRCLING	900-1	603 (700-1)	900-1¾ 603 (700-1¾)	960-2 663 (700-2)	1120-3 823 (900-3)	Knots	60	90	120	150	180
						Min:Sec	3:18	2:12	1:39	1:19	1:06

# VOR-A

SC-4, 07 FEB 2013 to 07 MAR 2013

SC-4, 07 FEB 2013 to 07 MAR 2013