

APP CRS <b>043°</b>	Rwy Idg <b>4599</b>
	TDZE <b>295</b>
	Apt Elev <b>297</b>

# RNAV (GPS) RWY 4

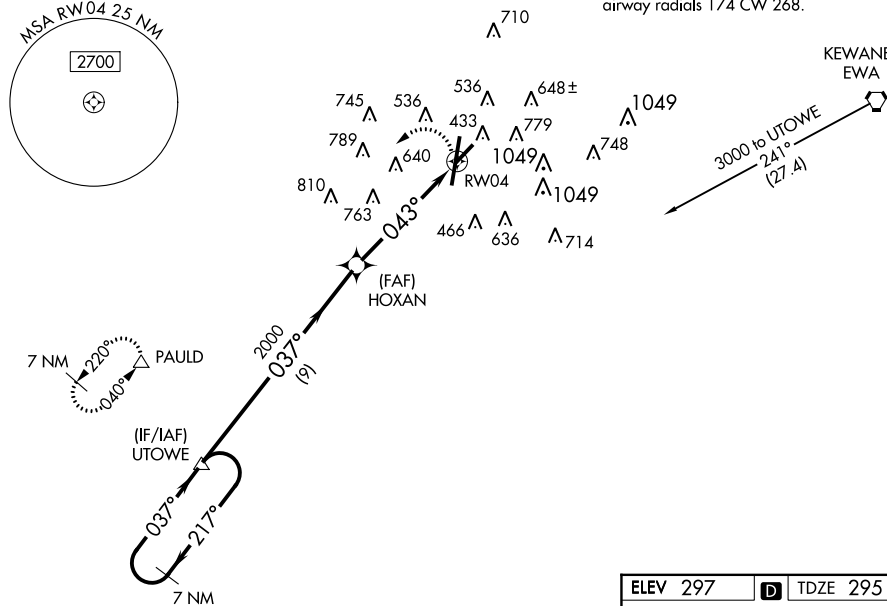
MERIDIAN/KEY FIELD (MEI)

**⚠** DME/DME RNP-0.3 NA. Circling NA SE of Rwy 1 and 22. Straight-In/Circling Rwy 4 and Circling Rwy 22 NA at night. When local altimeter setting not received, use Hattiesburg-Laurel Rgnl altimeter setting and increase all MDA 140 feet; increase LNAV Cat B visibility ¼ mile, Cats C, D and E visibility ½ mile, Circling Cats C and D visibility ½ mile. Visibility reductions by helicopters NA.

**MISSED APPROACH:**  
Climbing left turn to 3000  
direct PAULD and hold.

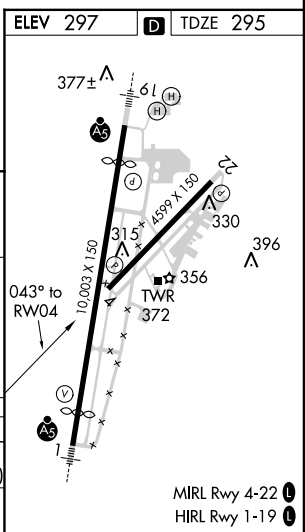
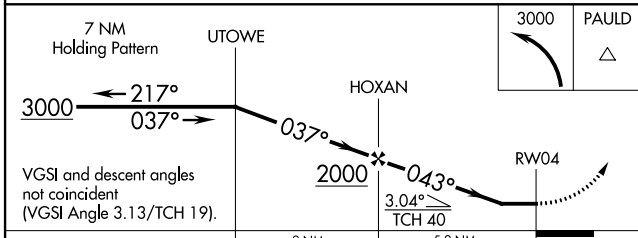
ATIS <b>126.475 291.675</b>	MERIDIAN APP CON * <b>120.5 269.6</b>	KEY TOWER * <b>119.8 (CTAF) 0 257.8</b>	GND CON <b>121.9 348.6</b>	UNICOM <b>122.95</b>
--------------------------------	--	--	-------------------------------	-------------------------

Procedure NA for arrival on EWA VORTAC  
airway radials 174 CW 268.



SC-4, 07 FEB 2013 to 07 MAR 2013

SC-4, 07 FEB 2013 to 07 MAR 2013



CATEGORY	A	B	C	D	E
LNAV MDA	920-1	625 (700-1)	920-1¾ 625 (700-1¾)	920-2 625 (700-2)	920-2¼ 625 (700-2¼)
CIRCLING	920-1	623 (700-1)	920-1¾ 623 (700-1¾)	960-2 663 (700-2)	1120-3 823 (900-3)

MIRL Rwy 4-22 **0**  
HIRL Rwy 1-19 **0**