

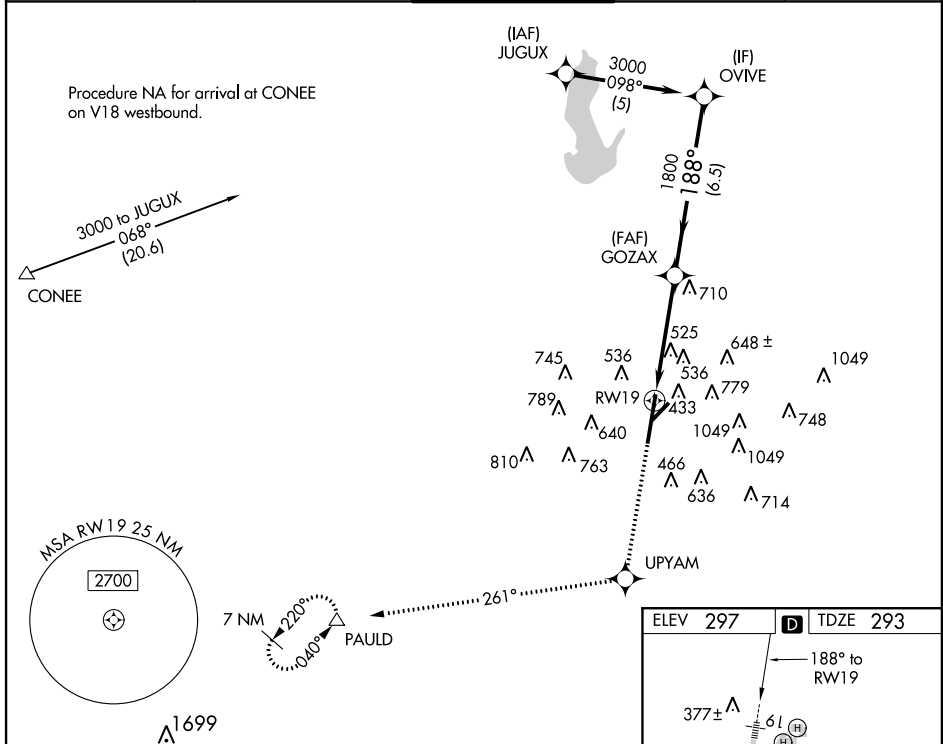
WAAS CH 61003 W19A	APP CRS 188°	Rwy ldg 9013 TDZE 293 Apt Elev 297
--	------------------------	---

RNAV (GPS) RWY 19

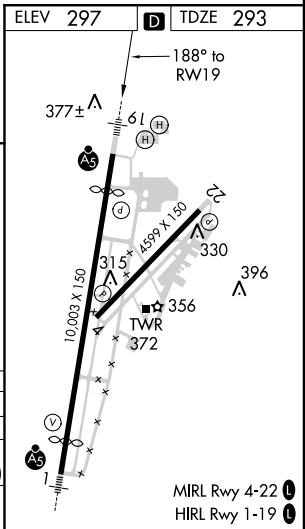
MERIDIAN/KEY FIELD (MEI)

<p>▼ DME/DME RNP-0.3 NA. Visibility reduction by helicopters NA. Circling NA SE of Rwys 1 and 22. When local altimeter setting not received, use Hattiesburg-Laurel Rgnl altimeter setting and increase all DA/MDA 140 feet, increase LNAV Cat A/B ½ mile, LPV all Cats, LNAV Cats C/D/E and Circling Cats C/D visibility ½ mile. VDP NA when using Hattiesburg-Laurel Rgnl altimeter setting. Circling to Rwy 22 NA at night.</p> <p>▲ ASR</p>	<p>MALSR</p>	<p>MISSED APPROACH: Climb to 3000 direct UPYAM and via 261° track to PAULD and hold.</p>
---	---------------------	---

<p>ATIS 126.475 291.675</p>	<p>MERIDIAN APP CON * 120.5 269.6</p>	<p>KEY TOWER* 119.8 (CTAF) 0 257.8</p>	<p>GND CON 121.9 348.6</p>	<p>UNICOM 122.95</p>
--	--	---	---------------------------------------	---------------------------------



3000	UPYAM	PAULD	VGSI and RNAV glidepath not coincident (VGSI Angle 3.00/TCH 54).	OVIVE	Procedure Turn NA
↑		tr 261°	GOZAX	3000	
*LNAV only.					
RW19		*1.3 NM to RW19	188°	1800	GS 3.00° TCH 51
1.3 NM		3.2 NM		6.5 NM	
CATEGORY	A	B	C	D	E
LPV DA	635-1¼ 342 (400-1¼)				
LNAV MDA	780-1	487 (500-1)	780-1¼ 487 (500-1¼)	780-1½ 487 (500-1½)	780-1¾ 487 (500-1¾)
CIRCLING	860-1 563 (600-1)	880-1¼ 583 (600-1¼)	880-1½ 583 (600-1½)	960-2½ 663 (700-2½)	1120-3 823 (900-3)



SC-4, 07 FEB 2013 to 07 MAR 2013

SC-4, 07 FEB 2013 to 07 MAR 2013