

WAAS CH <b>86500</b> <b>W01A</b>	APP CRS <b>008°</b>	Rwy Idg <b>9013</b> TDZE <b>289</b> Apt Elev <b>297</b>
--	------------------------	---

# RNAV (GPS) RWY 1

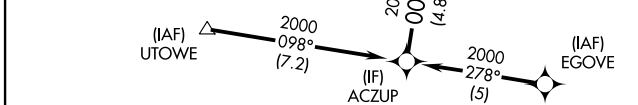
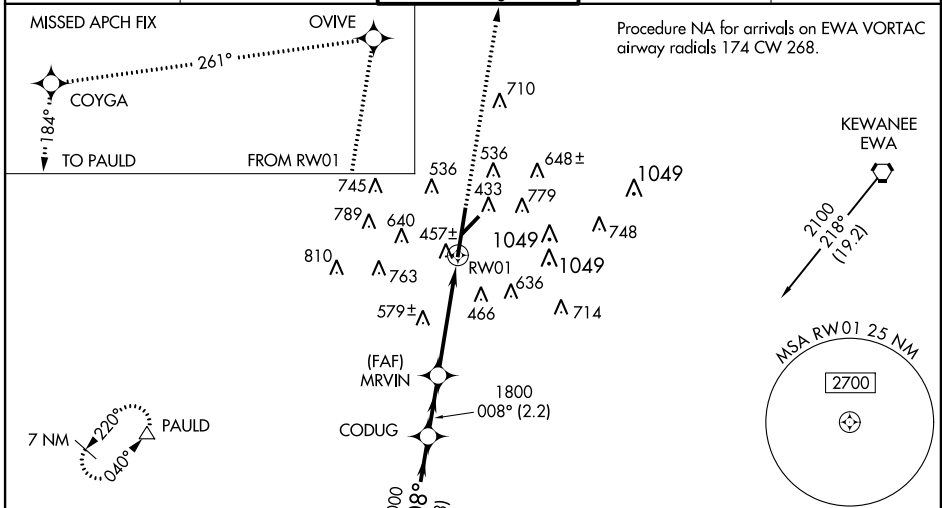
MERIDIAN/KEY FIELD (MEI)

**▼** Baro-VNAV NA when using Hattiesburg-Laurel Rgnl altimeter setting. For uncompensated Baro-VNAV systems, LNAV/VNAV NA below -1.5°C (5°F) or above 48°C (118°F).  
**▲** Circling NA SE of Rwy 1 and 22. DME/DME RNP-0.3 NA. When local altimeter setting not received, use Hattiesburg-Laurel Rgnl altimeter setting and increase all DA 138 feet and all MDA 140 feet, LPV all Cats visibility to RVR 4000, LNAV/VNAV all Cats visibility to 2 ¼ mile and LNAV Cats C, D, and E visibility ½ mile, and Circling Cats C and D visibility ½ mile. For inoperative MALSRL increase LPV Cat E visibility to RVR 4000, LNAV/VNAV Cat E visibility to 2 ¼ miles and LNAV Cat E visibility to 2 miles.  
 For inoperative MALSRL when using Hattiesburg-Laurel Rgnl altimeter setting increase LPV all Cats visibility to RVR 6000, LNAV/VNAV Cat E visibility to 2 ¾ miles, and LNAV Cat E visibility to 2 ½ miles. Circling to Rwy 22 NA at night.

**MALSRL**

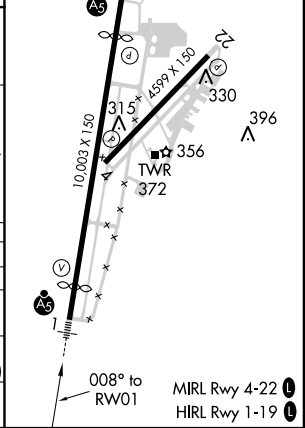
**MISSED APPROACH:**  
Climb to 3000 direct OVIVE and left turn via track 261° to COYGA and via track 184° to PAULD and hold.

ATIS <b>126.475 291.675</b>	MERIDIAN APP CON ★ <b>120.5 269.6</b>	KEY TOWER ★ <b>119.8 (CTAF) 0 257.8</b>	GND CON <b>121.9 348.6</b>	UNICOM <b>122.95</b>
--------------------------------	--	--	-------------------------------	-------------------------



ELEV 297	<b>D</b> TDZE 289
----------	-------------------

Procedure Turn NA	ACZUP	CODUG	OVIVE	COYGA	PAULD
			↑ 3000	tr 261°	tr 184°
GS 3.00° TCH 54	2000	2000	1800		
	4.8 NM	2.2 NM	3 NM	1.6 NM	
CATEGORY	A	B	C	D	E
LPV DA	489/24 200 (200-½)				
LNAV/VNAV DA	909-1¾ 620 (700-1¾)				
LNAV MDA	840/24	551 (600-½)	840/50 551 (600-1)	840/60 551 (600-1¼)	840-1½ 551 (600-1½)
CIRCLING	860-1 563 (600-1)	880-1 583 (600-1)	880-1½ 583 (600-1½)	960-2 663 (700-2)	1120-3 823 (900-3)



SC-4, 07 FEB 2013 to 07 MAR 2013

SC-4, 07 FEB 2013 to 07 MAR 2013