


LOC/DME I-HKQ 111.35 Chan 50 (Y)	APP CRS 188°	Rwy Idg 9013 TDZE 293 Apt Elev 297
--	------------------------	---

ILS or LOC RWY 19

MERIDIAN/KEY FIELD (MEI)

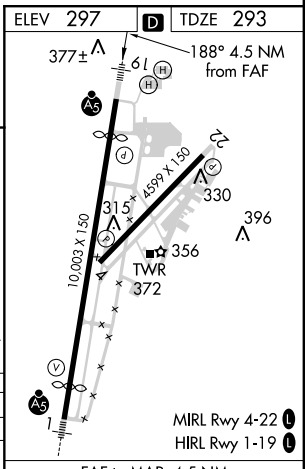
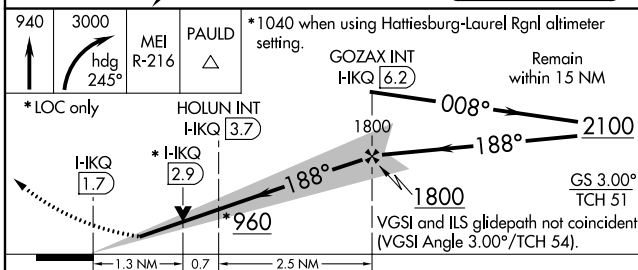
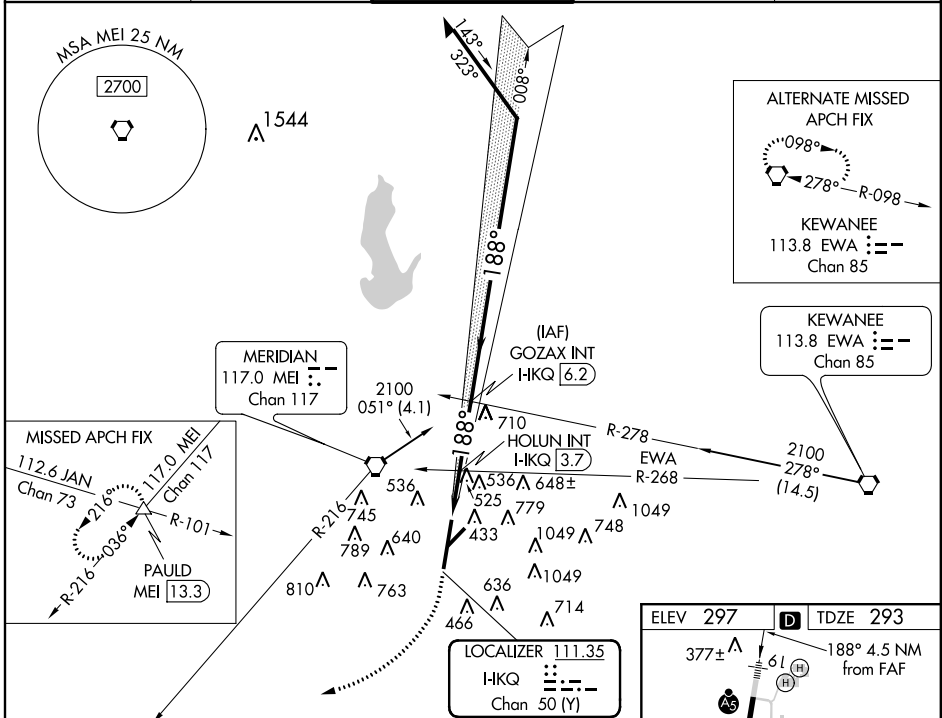
⚠ Inoperative table does not apply. DME Required. Visibility reduction by helicopters NA. Circling NA SE of Rwy 1 and 22. When local altimeter setting not received, use Hattiesburg-Laurel Rgnl altimeter setting and increase DA to 737 feet and all visibilities ½ mile; increase all MDA 140 feet and S-LOC 19 Cats. C/D/E, and Circling Cats. C/D visibility ½ mile. VDP NA when using Hattiesburg-Laurel Rgnl altimeter setting. Circling to Rwy 22 NA at night.

ASR

MALSRS 

MISSED APPROACH: Climb to 940 then climbing right turn to 3000 on heading 245° and MEI VORTAC R-216 to PAULD/MEI 13.3 DME and hold.

ATIS 126.475 291.675	MERIDIAN APP CON* 120.5 269.6	KEY TOWER* 119.8 (CTAF) 257.8	GND CON 121.9 348.6	UNICOM 122.95
--------------------------------	---	---	-------------------------------	-------------------------



CATEGORY	A	B	C	D	E
S-ILS 19	599-1 306 (400-1)				
S-LOC 19	760-1 467 (500-1)	760-1¼ 467 (500-1¼)	760-1½ 467 (500-1½)	760-1¾ 467 (500-1¾)	760-2 467 (500-2)
CIRCLING	860-1 563 (600-1)	880-1 583 (600-1)	880-1½ 583 (600-1½)	960-2 663 (700-2)	1120-3 823 (900-3)

FAF to MAP 4.5 NM					
Knots	60	90	120	150	180
Min:Sec	4:30	3:00	2:15	1:48	1:30

SC-4, 07 FEB 2013 to 07 MAR 2013

SC-4, 07 FEB 2013 to 07 MAR 2013