


LOC I-MEI 110.1	APP CRS 008°	Rwy Idg 9013
	TDZE 289	
	Apt Elev 297	

ILS or LOC RWY 1

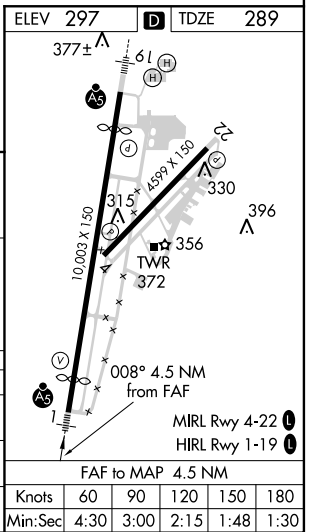
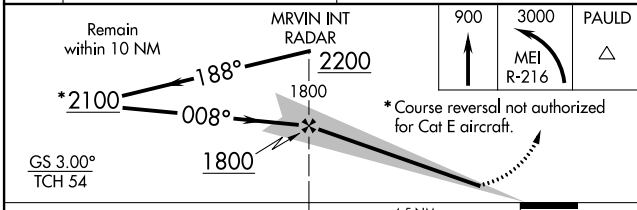
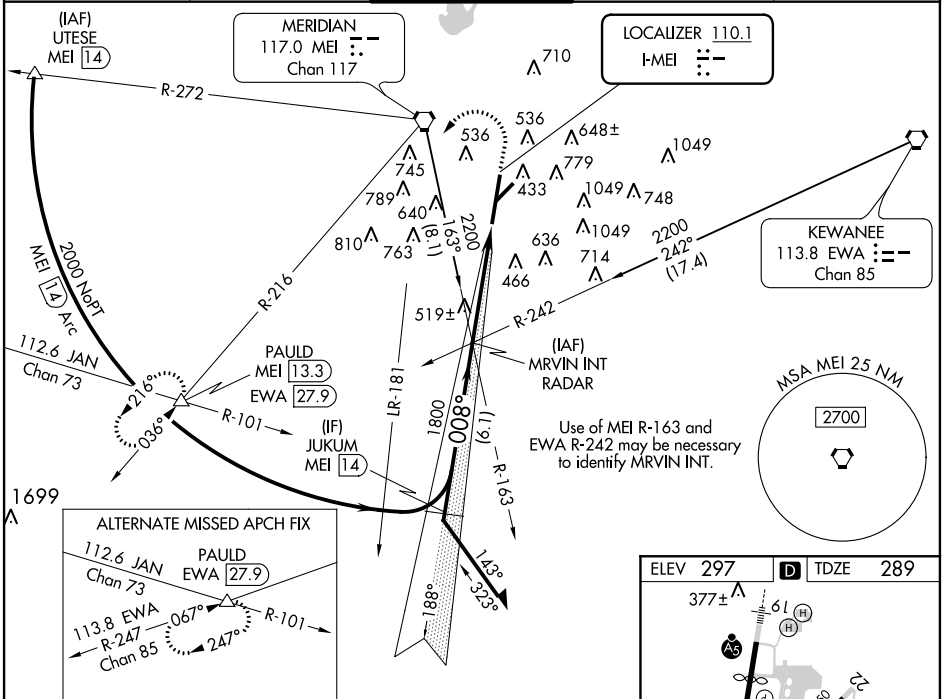
MERIDIAN/KEY FIELD (MEI)

⚠ Circling NA SE of Rwys 1 and 22. DME Required. When local altimeter setting not received, use Hattiesburg-Laurel Rgnl altimeter setting and increase all DA 138 feet and all MDA 140 feet, S-ILS 1 all Cats visibility to RVR 4000, S-LOC 1 Cat C visibility to RVR 6000, Cat D and E visibility ½ mile, and Circling Cats C and D visibility ½ mile. For inoperative MALS/R, when using Hattiesburg-Laurel Rgnl altimeter setting, increase S-ILS 1 all Cats visibility to RVR 6000, and S-LOC 1 Cat E visibility to 2 ¼ mile. **RVR 1800 authorized with the use of FD or AP or HUD to DA. For inoperative MALS/R, increase S-ILS 1 Cat E visibility to RVR 4000 and S-LOC 1 Cat E to 1 ¾ miles. Circling to Rwy 22 NA at night.

MALS/R


MISSED APPROACH:
 Climb to 900 then climbing left turn to 3000 via MEI VORTAC R-216 to PAULD/MEI 13.3 DME and hold.

ATIS 126.475 291.675	MERIDIAN APP CON* 120.5 269.6	KEY TOWER* 119.8 (CTAF) 257.8	GND CON 121.9 348.6	UNICOM 122.95
--------------------------------	---	---	-------------------------------	-------------------------



CATEGORY	A	B	C	D	E
S-ILS 1	**489/24 200 (200-½)				
S-LOC 1	780/24	491 (500-½)	780/40 491 (500-¾)	780/50 491 (500-1)	780/60 491 (500-1¼)
CIRCLING	860-1 563 (600-1)	880-1 583 (600-1)	880-1½ 583 (600-1½)	960-2 663 (700-2)	1120-3 823 (900-3)

SC-4, 07 FEB 2013 to 07 MAR 2013

SC-4, 07 FEB 2013 to 07 MAR 2013