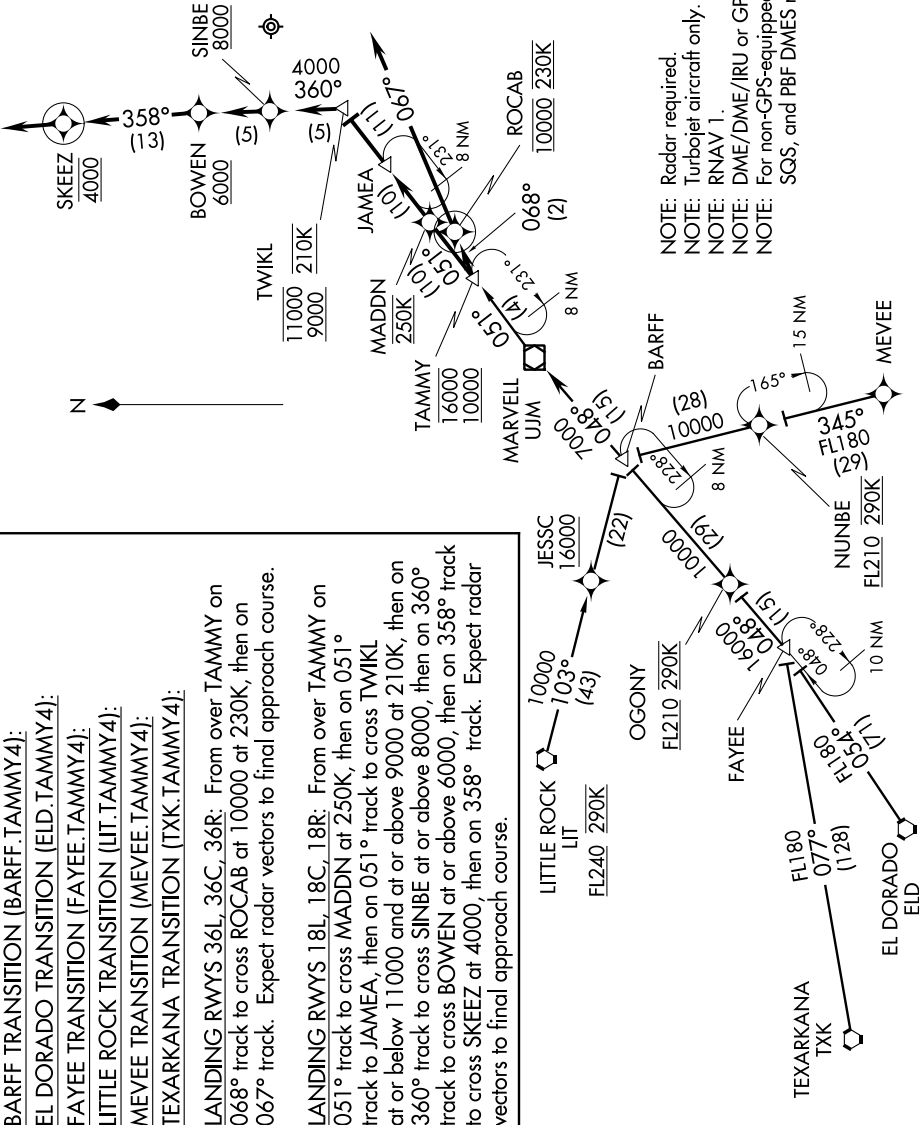


TAMMY FOUR ARRIVAL (RNAV)

SE-1, 07 FEB 2013 to 07 MAR 2013

MEMPHIS APP CON
119.1 291.6
ATIS 127.75



BARFF TRANSITION (BARFF.TAMMY4):
EL DORADO TRANSITION (ELD.TAMMY4):
FAYEE TRANSITION (FAYEE.TAMMY4):
LITTLE ROCK TRANSITION (LIT.TAMMY4):
MEVEE TRANSITION (MEVEE.TAMMY4):
TEXARKANA TRANSITION (TXK.TAMMY4):

LANDING RWYS 36L, 36C, 36R: From over TAMMY on 068° track to cross ROCAB at 10000 at 230K, then on 067° track. Expect radar vectors to final approach course.

LANDING RWYS 18L, 18C, 18R: From over TAMMY on 051° track to cross MADDN at 250K, then on 051° track to JAMEA, then on 051° track to cross TWIKL at or below 11000 and at or above 9000 at 210K, then on 360° track to cross SINBE at or above 8000, then on 360° track to cross BOWEN at or above 6000, then on 358° track to cross SKEEZ at 4000, then on 358° track. Expect radar vectors to final approach course.

NOTE: Radar required.
 NOTE: Turbojet aircraft only.
 NOTE: RNAV 1.
 NOTE: DME/DME/IRU or GPS required.
 NOTE: For non-GPS-equipped aircraft LIT, SQS, and PBF DMES must be operational.

NOTE: Chart not to scale.

TAMMY FOUR ARRIVAL (RNAV)

SE-1, 07 FEB 2013 to 07 MAR 2013