

(SELPH1.SELPH) 12096

SL-253 (FAA)

MEMPHIS INTL (MEM)  
MEMPHIS, TENNESSEE

# SELPH ONE DEPARTURE (RNAV)

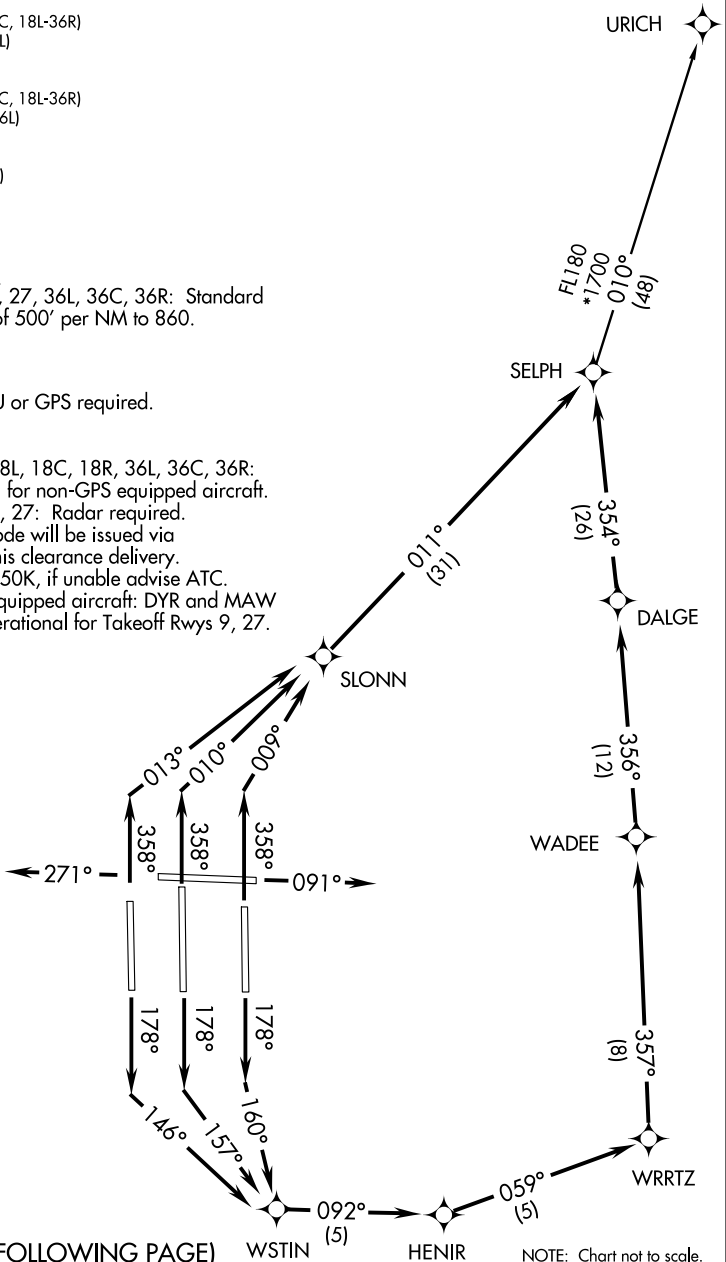
ATIS 127.75  
 CLNC DEL 125.2  
 GND CON  
 121.0 379.2 (Rwy 9-27)  
 121.9 379.2 (Rwys 18C-36C, 18L-36R)  
 121.65 379.2 (Rwy 18R-36L)  
 MEMPHIS TOWER  
 118.3 257.8 (Rwy 9-27)  
 119.7 257.8 (Rwys 18C-36C, 18L-36R)  
 128.425 257.8 (Rwy 18R-36L)  
 MEMPHIS DEP CON  
 124.65 284.7 (176°-355°)  
 124.15 385.45 (356°-175°)

### TAKEOFF MINIMUMS:

Rwys 9, 18L, 18C, 18R, 27, 36L, 36C, 36R: Standard with minimum climb of 500' per NM to 860.

- NOTE: DME/DME/IRU or GPS required.
- NOTE: RNAV 1.
- NOTE: Turbojets only.
- NOTE: Takeoff Rwys 18L, 18C, 18R, 36L, 36C, 36R: Radar required for non-GPS equipped aircraft.
- NOTE: Takeoff Rwys 9, 27: Radar required.
- NOTE: Transponder code will be issued via PDC or Memphis clearance delivery.
- NOTE: Accelerate to 250K, if unable advise ATC.
- NOTE: For non-GPS equipped aircraft: DYR and MAW DMEs must operational for Takeoff Rwys 9, 27.

SE-1, 07 FEB 2013 to 07 MAR 2013



SE-1, 07 FEB 2013 to 07 MAR 2013

(NARRATIVE ON FOLLOWING PAGE)

NOTE: Chart not to scale.

# SELPH ONE DEPARTURE (RNAV)

(SELPH1.SELPH) 12096

MEMPHIS, TENNESSEE  
MEMPHIS INTL (MEM)