

WAAS CH 53307 W18B	APP CRS 178°	Rwy Idg TDZE Apt Elev	9000 301 341
----------------------------------------	------------------------	-----------------------------	-----------------------------------------

RNAV (GPS) Z RWY 18L

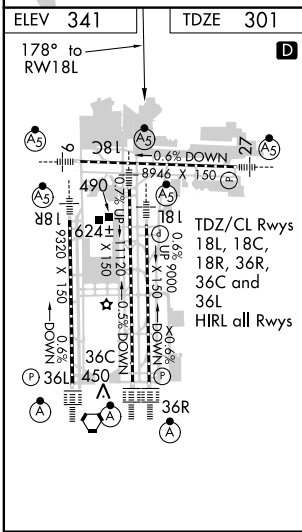
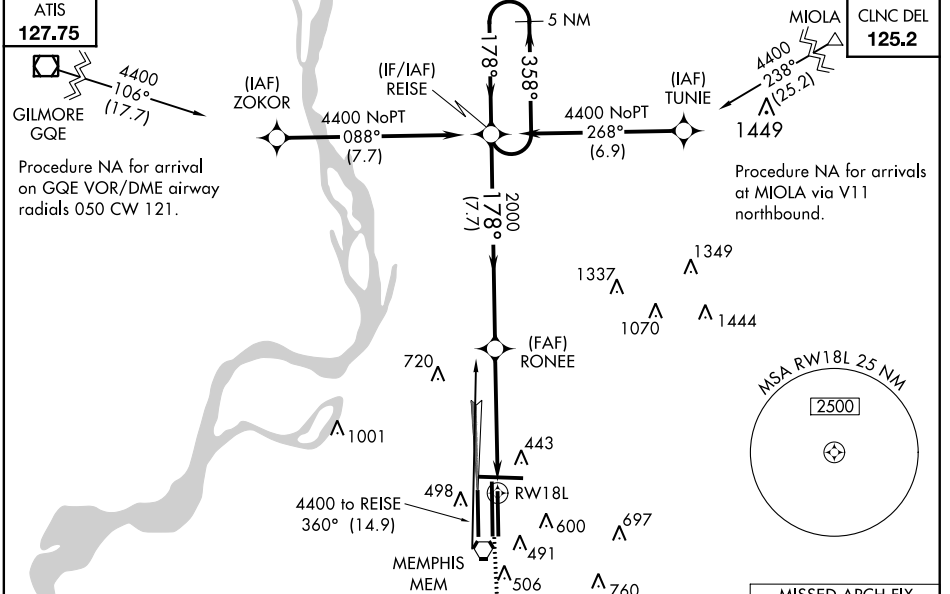
MEMPHIS INTL (MEM)

▼ For inoperative MALSR, increase LPV all Cats visibility to RVR 5000. For uncompensated Baro-VNAV systems, LNAV/VNAV NA below -15°C (5°F) or above 48°C (118 °F). DME/DME RNP-0.3 NA. Simultaneous approach authorized with Rwy 18R. LNAV procedure NA during simultaneous operations. Use of FD or AP providing RNAV track guidance required during simultaneous operations.

MALSR
AS

MISSED APPROACH: Climb to 5000 direct PENLE and via track 134° to KEEZE and hold, continue climb-in-hold to 5000.

MEMPHIS APP CON 119.1 291.6 (176°-355°) 125.8 338.3 (356°-175°)	MEMPHIS TOWER (Rwy 9-27) 118.3 257.8 (Rwys 18C-36C, 18L-36R) 119.7 257.8 (Rwy 18R-36L) 128.425 257.8	GND CON (Rwy 9-27) 121.0 379.2 (Rwys 18C-36C, 18L-36R) 121.9 379.2 (Rwy 18R-36L) 121.65 379.2
-------------------------------------------------------------------------------------	------------------------------------------------------------------------------------------------------------------------------------	-----------------------------------------------------------------------------------------------------------------------------



MISSED APCH FIX
KEEZE

5000	PENLE	tr 134°	KEEZE	VGSI and RNAV glidepath not coincident (VGSI Angle 3.00/TCH 73).
------	-------	---------	-------	------------------------------------------------------------------

5 NM Holding Pattern
REISE

358° → **4400**
← **178°**

GS 3.00°
TCH 60

1.7 NM → 3.5 NM → 7.7 NM

CATEGORY	A	B	C	D
LPV DA	557/24 256 (300-1/2)			
LNAV/VNAV DA	874-1 1/2 573 (600-1 1/2)			
LNAV MDA	880/24	579 (600-1/2)	880/50 579 (600-1)	880/60 579 (600-1 1/4)
CIRCLING	940-1	599 (600-1)	940-1 1/2 599 (600-1 1/2)	940-2 599 (600-2)

SE-1, 07 FEB 2013 to 07 MAR 2013

SE-1, 07 FEB 2013 to 07 MAR 2013