

WAAS CH 97507 W18D	APP CRS 178°	Rwy ldg TDZE Apt Elev	1120 290 341
--	------------------------	-----------------------------	---

RNAV (GPS) Z RWY 18C

MEMPHIS INTL (MEM)

▼ For inoperative MALSR, increase LPV all Cots visibility to RVR 6000.
For uncompensated Baro-VNAV systems, LNAV/VNAV NA below -15°C (5°F) or above 48°C (118°F). DME/DME RNP-0.3 NA. Simultaneous approach authorized with Rwy 18R. LNAV procedure NA during simultaneous operations. Use of FD or AP providing RNAV track guidance required during simultaneous operations.

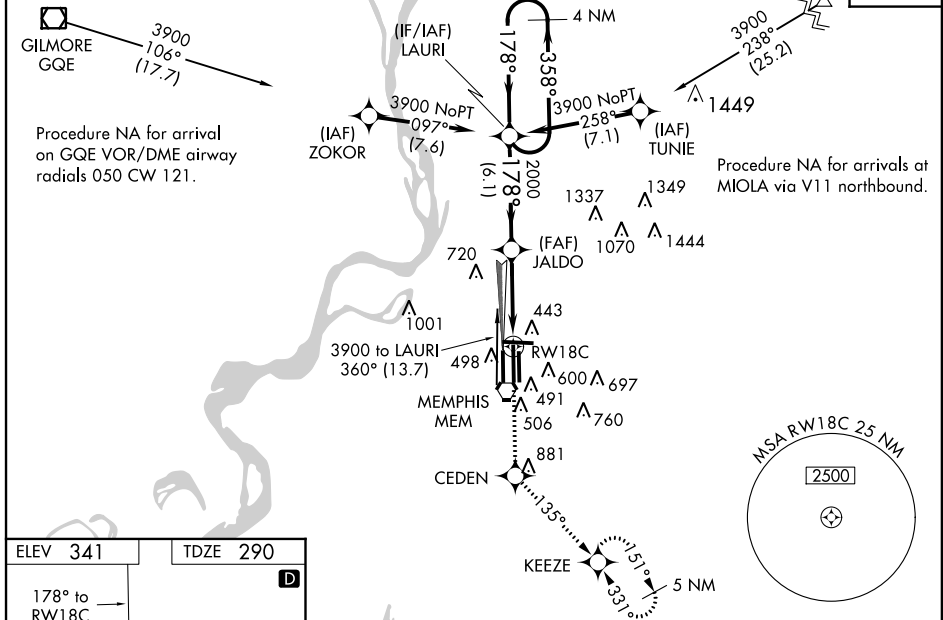
MALSR

MISSED APPROACH: Climb to 5000 direct CEDEN and via track 135° to KEEZE and hold, continue climb-in-hold to 5000.

MEMPHIS APP CON	MEMPHIS TOWER	GND CON
119.1 291.6 (176°-355°)	118.3 257.8 (Rwy 9-27)	121.0 379.2 (Rwy 9-27)
125.8 338.3 (356°-175°)	119.7 257.8 (Rwys 18C-36C, 18L-36R)	121.9 379.2 (Rwys 18C-36C, 18L-36R)
	128.425 257.8 (Rwy 18R-36L)	121.65 379.2 (Rwy 18R-36L)

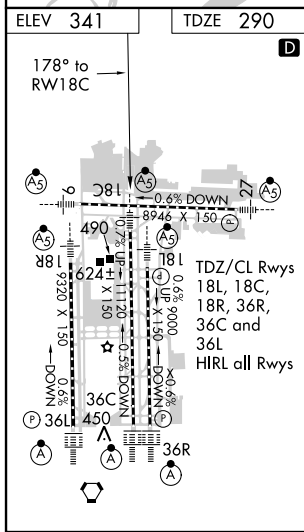
ATIS
127.75

CLNC DEL
125.2



SE-1, 07 FEB 2013 to 07 MAR 2013

SE-1, 07 FEB 2013 to 07 MAR 2013



5000	CEDEN	Ir 135°	KEEZE	4 NM Holding Pattern
*LNAV only				
CATEGORY	A	B	C	D
LPV DA	665/40 375 (400-¾)			
LNAV/VNAV DA	741/60 451 (400-1¼)			
LNAV MDA	880/24	590 (600-½)	880/50 590 (600-1)	880/60 590 (600-1¼)
CIRCLING	940-1	599 (600-1)	940-1½ 599 (600-1½)	940-2 599 (600-2)