

APP CRS	Rwy Idg	9127
178°	TDZE	295
	Apt Elev	341

RNAV (RNP) Y RWY 18R

MEMPHIS INTL (MEM)

▼ GPS Required. For uncompensated Baro-VNAV systems, procedure NA below -9°C (16°F) or above 48°C (118°F). For inoperative MALS/R, increase RNP 0.19 * all Cats visibility to RVR 6000 and RNP 0.30 all Cats visibility to 1 3/4 mile. * Missed approach requires minimum climb of 425 feet per NM to 1000. Simultaneous approach authorized with Rwy 18C/L. Use of FD or AP providing RNAV track guidance required during simultaneous operations.

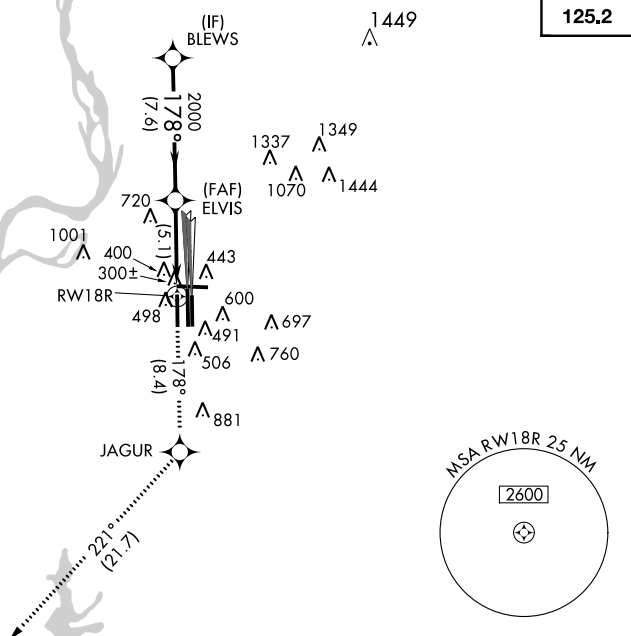
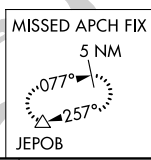
MALS/R MISSED APPROACH: Climb to 5000 via track 178° to JAGUR and via track 221° to JEPOB and hold.

MEMPHIS APP CON	MEMPHIS TOWER	GND CON
119.1 291.6 (176°-355°)	(Rwy 9-27) 118.3 257.8	(Rwy 9-27) 121.0 379.2
125.8 338.3 (356°-175°)	(Rwys 18C-36C, 18L-36R) 119.7 257.8	(Rwys 18C-36C, 18L-36R) 121.9 379.2
	(Rwy 18R-36L) 128.425 257.8	(Rwy 18R-36L) 121.65 379.2

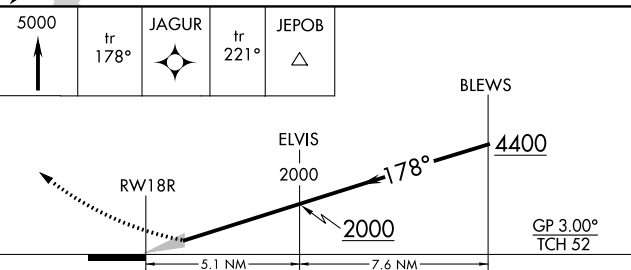
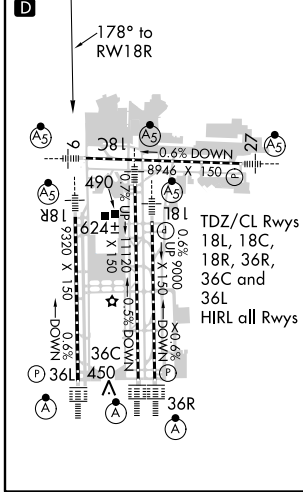
ATIS
127.75

CLNC DEL
125.2

RADAR REQUIRED



ELEV 341	TDZE 295
----------	----------



CATEGORY	A	B	C	D
RNP 0.19 * DA		641/40	346 (300-3/4)	
RNP 0.30 DA		769/60	474 (500-1 1/4)	

AUTHORIZATION REQUIRED

SE-1, 07 FEB 2013 to 07 MAR 2013

SE-1, 07 FEB 2013 to 07 MAR 2013