


# RNAV (RNP) Y RWY 18L

MEMPHIS INTL (MEM)

APP CRS	Rwy Idg	<b>9000</b>
<b>178°</b>	TDZE	<b>301</b>
	Apt Elev	<b>341</b>

GPS Required. For uncompensated Baro-VNAV systems, procedure NA below -9°C (16°F) or above 48°C (118 °F). \* Missed approach requires minimum climb of 400 feet per NM to 1000. For inoperative MALS, increase RNP 0.30\* all Cats visibility to RVR 6000 and RNP 0.30 all Cats visibility to 1¾. Simultaneous approach authorized with Rwy 18R. Use of FD or AP providing RNAV track guidance required during simultaneous operations.

MALS R

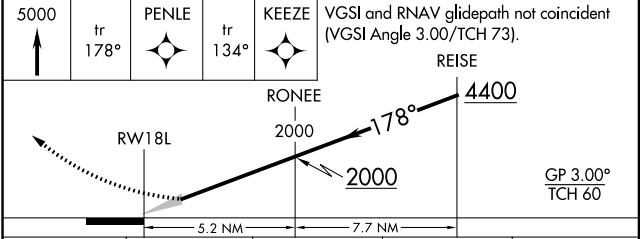
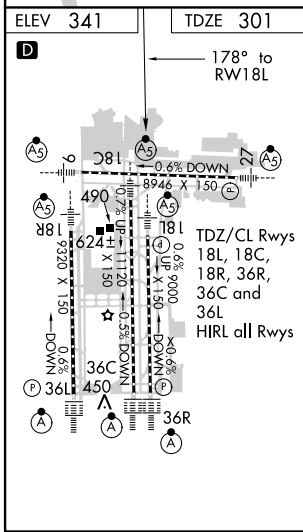
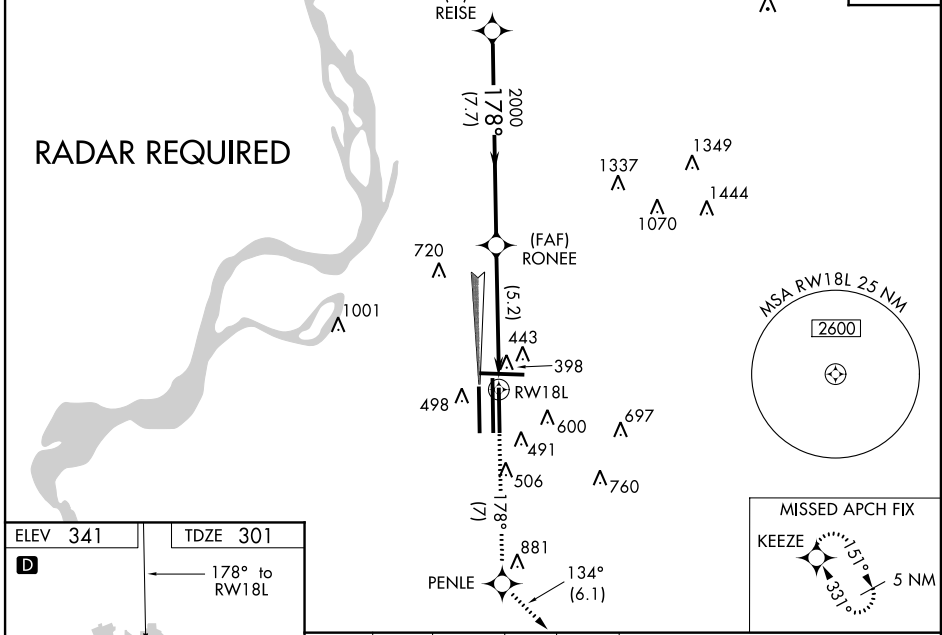


MISSED APPROACH: Climb to 5000 via track 178° to PENLE and via track 134° to KEEZE and hold, continue climb-in-hold to 5000.

MEMPHIS APP CON	MEMPHIS TOWER	GND CON
<b>119.1 291.6</b> (176°-355°)	(Rwy 9-27) <b>118.3 257.8</b>	(Rwy 9-27) <b>121.0 379.2</b>
<b>125.8 338.3</b> (356°-175°)	(Rwys 18C-36C, 18L-36R) <b>119.7 257.8</b>	(Rwys 18C-36C, 18L-36R) <b>121.9 379.2</b>
	(Rwy 18R-36L) <b>128.425 257.8</b>	(Rwy 18R-36L) <b>121.65 379.2</b>

ATIS
<b>127.75</b>

CLNC DEL
<b>125.2</b>



CATEGORY	A	B	C	D
RNP 0.30 DA*	680/50 379 (400-1)			
RNP 0.30 DA	771/60 470 (500-1¼)			

**AUTHORIZATION REQUIRED**

SE-1, 07 FEB 2013 to 07 MAR 2013

SE-1, 07 FEB 2013 to 07 MAR 2013