

APP CRS	Rwy Idg	9127
178°	TDZE	295
	Apt Elev	341

RNAV (RNP) X RWY 18R

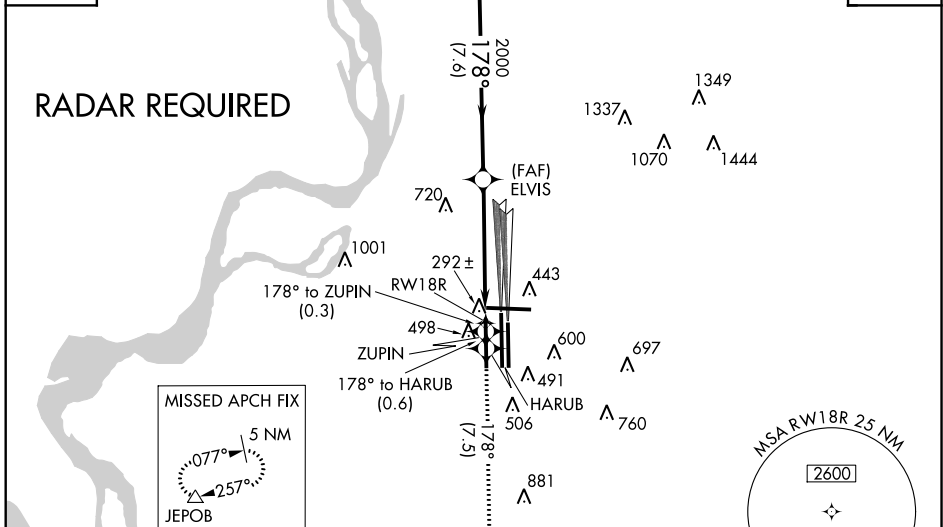
MEMPHIS INTL (MEM)

GPS Required. Missed approach requires RNP less than 1.0. For uncompensated Baro-VNAV systems, procedure NA below -9°C (16°F) or above 48°C (118°F). For inoperative MALSR, increase RNP 0.14 all Cats visibility to RVR 5000. Simultaneous approach authorized with Rwy 18C/L. Use of FD or AP providing RNAV track guidance required during simultaneous operations.

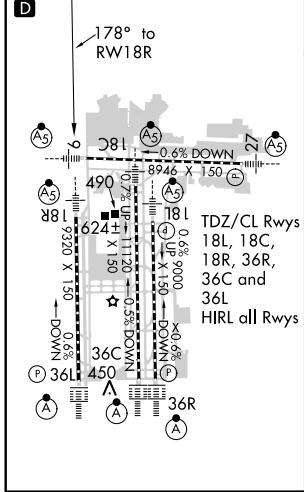
MALSR MISSED APPROACH: Climb to 5000 via track 178° to ZUPIN and via track 178° to HARUB and via track 178° to JAGUR and via track 221° to JEJOB and hold.

MEMPHIS APP CON	MEMPHIS TOWER	GND CON
119.1 291.6 (176°-355°)	118.3 257.8 (Rwy 9-27)	121.0 379.2 (Rwy 9-27)
125.8 338.3 (356°-175°)	119.7 257.8 (Rwys 18C-36C, 18L-36R)	121.9 379.2 (Rwys 18C-36C, 18L-36R)
	128.425 257.8 (Rwy 18R-36L)	121.65 379.2 (Rwy 18R-36L)

ATIS	(IF) BLEWS	CLNC DEL
127.75	1449	125.2



ELEV	341	TDZE	295
------	-----	------	-----



5000	↑	tr 178°	ZUPIN	tr 178°	HARUB	tr 178°	JAGUR	tr 221°	JEJOB
			BLEWS						
					ELVIS				4400
					2000				GP 3.00°
					2000				TCH 52

CATEGORY	A	B	C	D
RNP 0.14 DA		562/24	267 (300-½)	

AUTHORIZATION REQUIRED

SE-1, 07 FEB 2013 to 07 MAR 2013

SE-1, 07 FEB 2013 to 07 MAR 2013