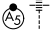


RNAV (RNP) X RWY 18L

MEMPHIS INTL (MEM)

APP CRS	Rwy Idg	9000
178°	TDZE	301
	Apt Elev	341

GPS Required. For uncompensated Baro-VNAV systems, procedure NA below -9°C (16°F) or above 48°C (118 °F). For inoperative MALSR, increase RNP 0.11 all Cats visibility to RVR 6000. Missed approach requires RNP less than 1.0. Simultaneous approach authorized with Rwy 18R. Use of FD or AP providing RNAV track guidance required during simultaneous operations.

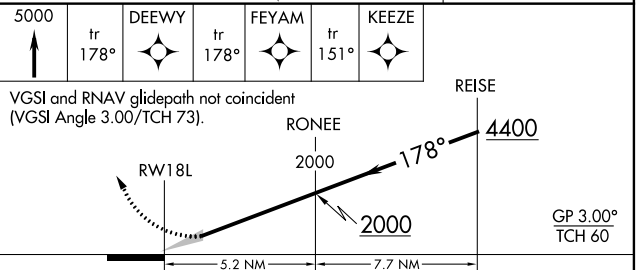
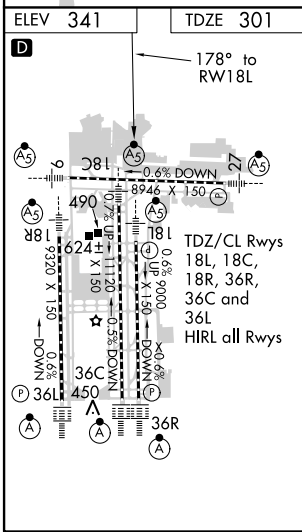
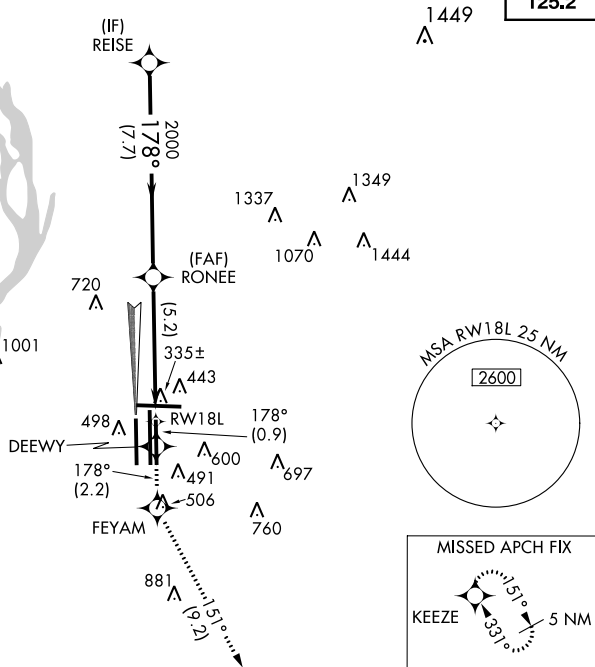
MALSRL

 MISSED APPROACH: Climb to 5000 via track 178° to DEEWY and via track 178° to FEYAM and via track 151° to KEEZE and hold, continue climb-in-hold to 5000.

MEMPHIS APP CON	MEMPHIS TOWER	GND CON
119.1 291.6 (176°-355°)	(Rwy 9-27) 118.3 257.8	(Rwy 9-27) 121.0 379.2
125.8 338.3 (356°-175°)	(Rwys 18C-36C, 18L-36R) 119.7 257.8	(Rwys 18C-36C, 18L-36R) 121.9 379.2
	(Rwy 18R-36L) 128.425 257.8	(Rwy 18R-36L) 121.65 379.2

ATIS
127.75

CLNC DEL
125.2

RADAR REQUIRED



CATEGORY	A	B	C	D
RNP 0.11 DA	647/40 346 (400-¾)			

AUTHORIZATION REQUIRED

SE-1, 07 FEB 2013 to 07 MAR 2013

SE-1, 07 FEB 2013 to 07 MAR 2013