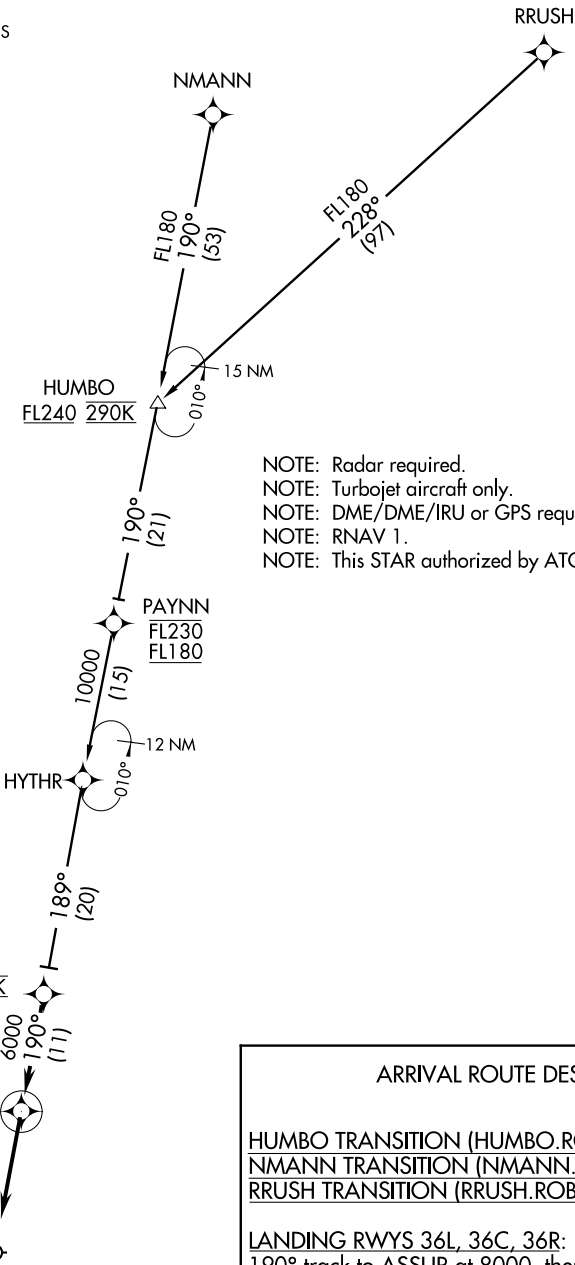


ROBYE ONE ARRIVAL (RNAV)

MEMPHIS APP CON
119.1 291.6
MEMPHIS INTL ATIS
127.75



- NOTE: Radar required.
- NOTE: Turbojet aircraft only.
- NOTE: DME/DME/IRU or GPS required.
- NOTE: RNAV 1.
- NOTE: This STAR authorized by ATC assignment only.

NOTE: Chart not to scale.

ARRIVAL ROUTE DESCRIPTION

HUMBO TRANSITION (HUMBO.ROBYE1):
NMANN TRANSITION (NMANN.ROBYE1):
RRUSH TRANSITION (RRUSH.ROBYE1):

LANDING RWYS 36L, 36C, 36R: From over ROBYE on 190° track to ASSUR at 8000, then on 190° track, expect radar vectors to final approach course.

SE-1, 07 FEB 2013 to 07 MAR 2013

SE-1, 07 FEB 2013 to 07 MAR 2013

ROBYE ONE ARRIVAL (RNAV)