


WAAS CH 63106 W09A	APP CRS 091°	Rwy Idg TDZE Apt Elev	8946 259 341
--	------------------------	-----------------------------	---

RNAV (GPS) RWY 9

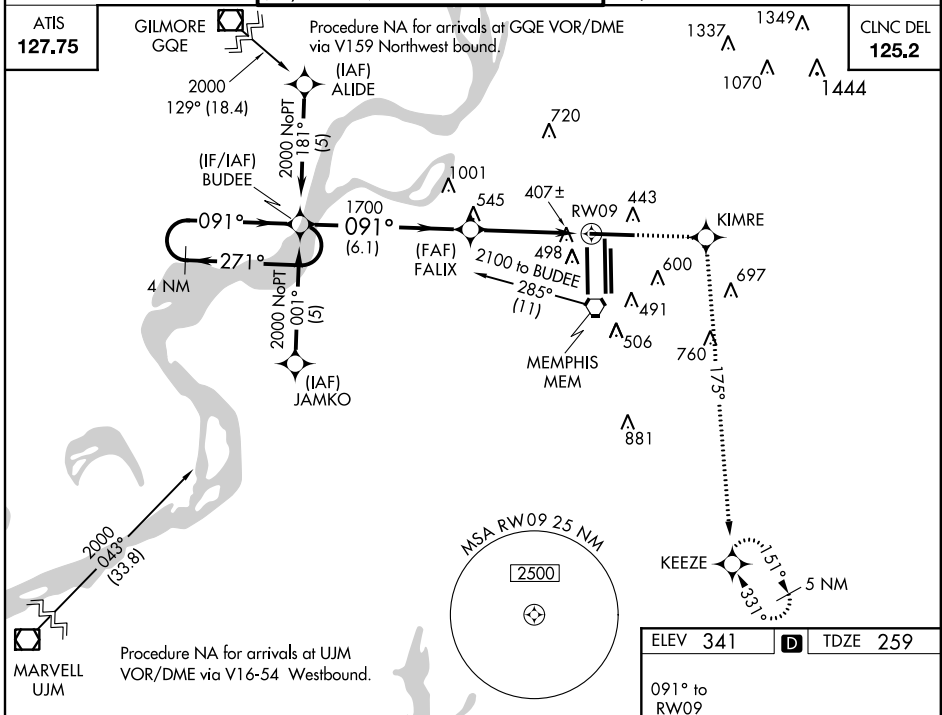
MEMPHIS INTL (MEM)

▼ For uncompensated Baro-VNAV systems, LNAV/VNAV NA below -15°C (5°F) or above 48°C (118°F). For inoperative MALSR, increase LPV all Cats visibility to RVR 5000. DME/DME RNP-0.3 NA.

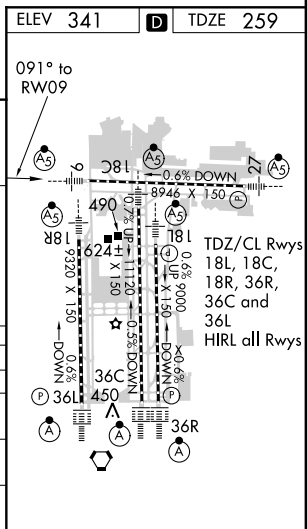
MALSR 

MISSED APPROACH: Climb to 5000 direct KIMRE and via 175° track to KEEZE and hold, continue climb-in-hold to 5000.

MEMPHIS APP CON		MEMPHIS TOWER		GND CON	
119.1	291.6	(Rwy 9-27)	118.3 257.8	(Rwy 9-27)	121.0 379.2
	(176°-355°)	(Rwys 18C-36C, 18L-36R)	119.7 257.8	(Rwys 18C-36C, 18L-36R)	121.9 379.2
125.8	338.3	(Rwy 18R-36L)	128.425 257.8	(Rwy 18R-36L)	121.65 379.2
	(356°-175°)				



4 NM Holding Pattern		5000	KIMRE	tr	KEEZE
BUDEE		FALIX	*1.8 NM to RW09	*RNAV Only	
2000 ← 271°		→ 091°			
GS 3.00° TCH 52		1700			
		6.1 NM	2.5 NM	1.8 NM	
CATEGORY	A	B	C	D	
LPV DA	557/24 298 (300-½)				
LNAV/VNAV DA	751/60 492 (500-1¼)				
LNAV MDA	880/24	621 (600-½)	880/60	880-1½	
			621 (600-1¼)	621 (600-1½)	
CIRCLING	940-1	599 (600-1)	940-1½	940-2	
			599 (600-½)	599 (600-2)	



SE-1, 07 FEB 2013 to 07 MAR 2013

SE-1, 07 FEB 2013 to 07 MAR 2013