

WAAS CH <b>49107</b> <b>W36D</b>	APP CRS <b>358°</b>	Rwy Idg TDZE Apt Elev	<b>9000</b> <b>335</b> <b>341</b>
--	------------------------	-----------------------------	---

# RNAV (GPS) RWY 36R

MEMPHIS INTL (MEM)

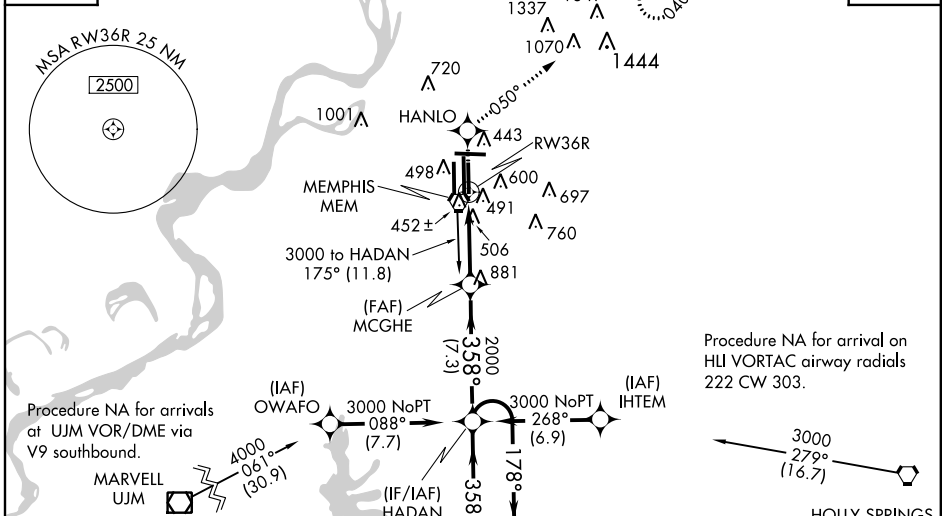
▼ For inoperative ALSF, increase LPV all Cats visibility to RVR 5000 and LNAV Cat D visibility to RVR 6000. For uncompensated Baro-VNAV systems, LNAV/VNAV NA below -15°C (5°F) or above 48°C (118°F). DME/DME RNP-0.3 NA. Simultaneous approach authorized with Rwy 36L. LNAV procedure NA during simultaneous operations. Use of FD or AP providing RNAV track guidance required during simultaneous operations.

ALSF-2  
MISSED APPROACH: Climb to 5000 direct HANLO and via 050° track to OROCU and hold, continue climb-in-hold to 5000.

MEMPHIS APP CON <b>119.1 291.6</b> (176°-355°) <b>125.8 338.3</b> (356°-175°)	MEMPHIS TOWER (Rwy 9-27) <b>118.3 257.8</b> (Rwys 18C-36C, 18L-36R) <b>119.7 257.8</b> (Rwy 18R-36L) <b>128.425 257.8</b>	GND CON (Rwy 9-27) <b>121.0 379.2</b> (Rwys 18C-36C, 18L-36R) <b>121.9 379.2</b> (Rwy 18R-36L) <b>121.65 379.2</b>
---	--	---

ATIS  
**127.75**

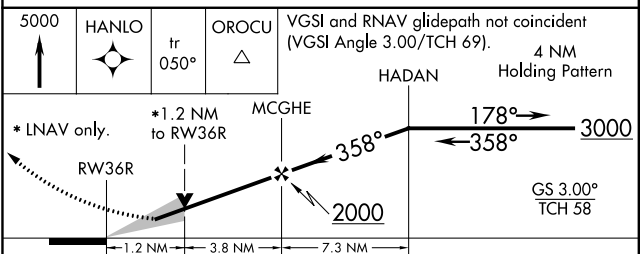
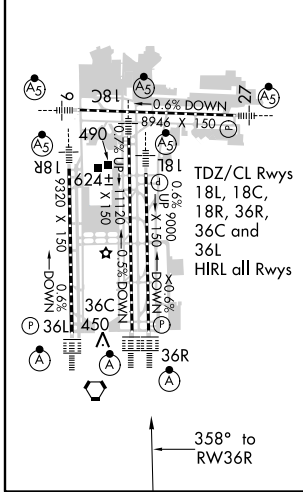
CLNC DEL  
**125.2**



SE-1, 07 FEB 2013 to 07 MAR 2013

SE-1, 07 FEB 2013 to 07 MAR 2013

ELEV 341	<b>D</b>	TDZE 335
----------	----------	----------



CATEGORY	A	B	C	D
LPV DA		639/24	304 (300-½)	
LNAV/VNAV DA		763/50	428 (500-1)	
LNAV MDA	760/24	425 (500-½)	760/40 425 (500-¾)	760/50 425 (500-1)
CIRCLING	940-1 599 (600-1)	940-1 599 (600-1)	940-1½ 599 (600-1½)	940-2 599 (600-2)