

WAAS CH 65907 W36A	APP CRS 358°	Rwy Idg TDZE Apt Elev	9320 321 341
--	------------------------	-----------------------------	---

RNAV (GPS) RWY 36L

MEMPHIS INTL (MEM)

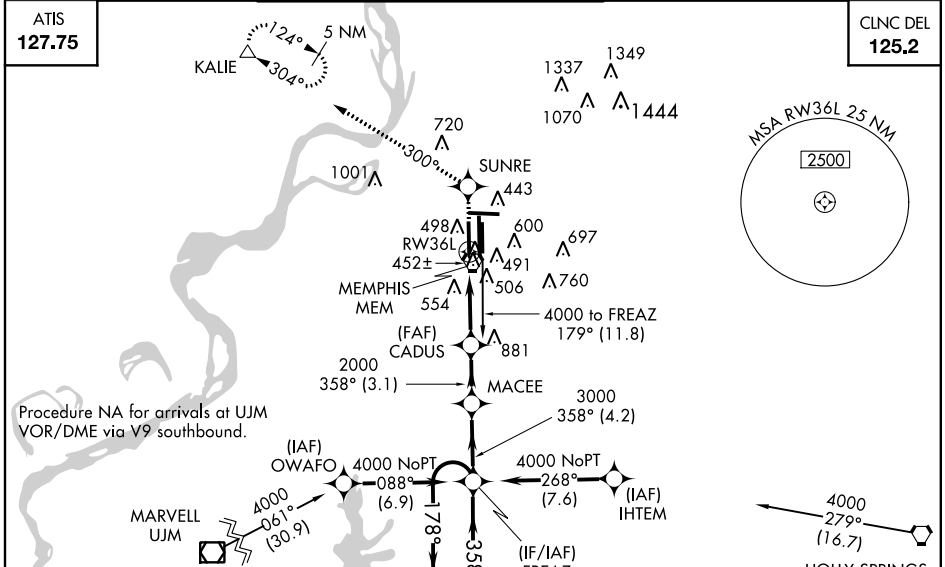
For inoperative ALSF, increase LPV all Cats visibility to RVR 6000. For uncompensated Baro-VNAV systems, LNAV/VNAV NA below -15°C (5°F) or above 48°C (118°F). DME/DME RNP-0.3 NA. Simultaneous approach authorized with Rwy 36R/C. LNAV procedure NA during simultaneous operations. Use of FD or AP providing RNAV track guidance required during simultaneous operations.

ALSF-2

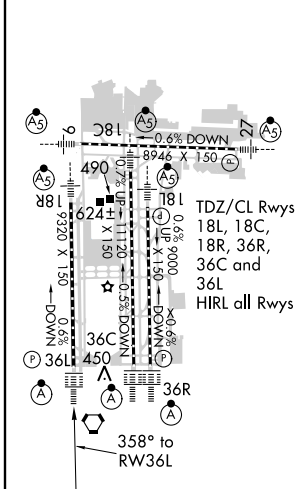


MISSED APPROACH: Climb to 5000 direct SUNRE and via 300° track to KALIE and hold, continue climb-in-hold to 5000.

MEMPHIS APP CON	MEMPHIS TOWER	GND CON
119.1 291.6 (176°-355°)	(Rwy 9-27) 118.3 257.8	(Rwy 9-27) 121.0 379.2
125.8 338.3 (3566-175°)	(Rwys 18C-36C, 18L-36R) 119.7 257.8	(Rwys 18C-36C, 18L-36R) 121.9 379.2
	(Rwy 18R-36L) 128.425 257.8	(Rwy 18R-36L) 121.65 379.2



ELEV 341	D	TDZE 321
----------	----------	----------



5000	SUNRE	tr 300°	KALIE	FREAZ	4 NM Holding Pattern
*LNAV only.					
RW36L		*1.2 NM to RW36L	CADUS	MACCEE	FREAZ
1.2		3.8 NM	3.1 NM	4.2 NM	
CATEGORY	A	B	C	D	
LPV DA		673/40	352 (400-¾)		
LNAV/VNAV DA		760/50	439 (500-1)		
LNAV MDA	780/24	459 (500-½)	780/40 459 (500-¾)	780/50 459 (500-1)	
CIRCLING	940-1	599 (600-1)	940-1½ 599 (600-1½)	940-2 599 (600-2)	

SE-1, 07 FEB 2013 to 07 MAR 2013

SE-1, 07 FEB 2013 to 07 MAR 2013