

WAAS CH 40407 W36B	APP CRS 358°	Rwy Idg TDZE 341 Apt Elev 341	11120
--	------------------------	---	--------------

RNAV (GPS) RWY 36C

MEMPHIS INTL (MEM)

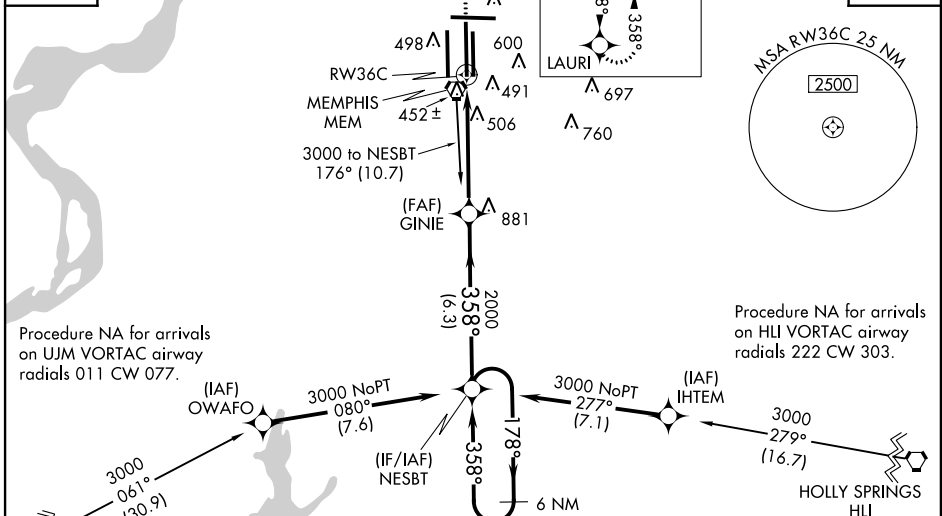
▼ For inoperative ALSF, increase LPV all Cats. visibility to RVR 5000, increase LNAV Cat D visibility to RVR 6000. For uncompensated Baro-VNAV systems, LNAV/VNAV NA below -15°C (5°F) or above 48°C (118°F). DME/DME RNP-0.3 NA. Simultaneous approach authorized with Rwy 36L. LNAV procedure NA during simultaneous operations. Use of FD or AP providing RNAV track guidance required during simultaneous operations.

ALSF-2

MISSED APPROACH:
Climb to 3000 direct LAURI and hold.

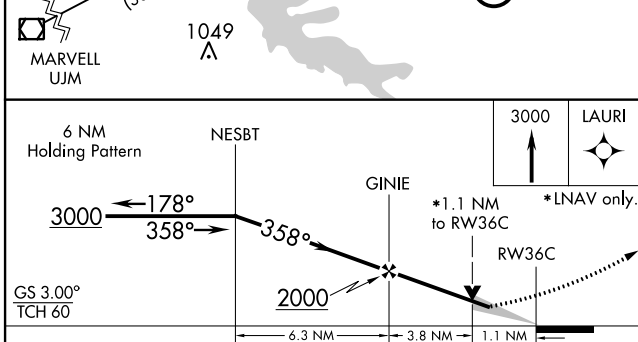
MEMPHIS APP CON 119.1 291.6 (176°-355°) 125.8 338.3 (356°-175°)	MEMPHIS TOWER (Rwy 9-27) 118.3 257.8 (Rwys 18C-36C, 18L-36R) 119.7 257.8 (Rwy 18R-36L) 128.425 257.8	GND CON (Rwy 9-27) 121.0 379.2 (Rwys 18C-36C, 18L-36R) 121.9 379.2 (Rwy 18R-36L) 121.65 379.2
---	--	---

ATIS
127.75



Procedure NA for arrivals on UJM VORTAC airway radials 011 CW 077.

Procedure NA for arrivals on HLI VORTAC airway radials 222 CW 303.



ELEV 341	D TDZE 341
----------	-------------------

Diagram details: Shows RWY 36C and 36L with various altitudes and navigation aids. Key altitudes include 341, 450, 490, 624, 881, 900, 920, 930, 940, 950, 960, 970, 980, 990, 1000, 1010, 1020, 1030, 1040, 1050, 1060, 1070, 1080, 1090, 1100, 1110, 1120, 1130, 1140, 1150, 1160, 1170, 1180, 1190, 1200, 1210, 1220, 1230, 1240, 1250, 1260, 1270, 1280, 1290, 1300, 1310, 1320, 1330, 1340, 1350, 1360, 1370, 1380, 1390, 1400, 1410, 1420, 1430, 1440, 1450, 1460, 1470, 1480, 1490, 1500. Navigation aids include LAURI, GINIE, and various VORTAC radials.

CATEGORY	A	B	C	D
LPV DA	665/24 324 (400-½)			
LNAV/VNAV DA	765/50 424 (500-1)			
LNAV MDA	760/24 419 (500-½)	760/40 419 (500-¾)	760/50 419 (500-1)	760/50 419 (500-1)
CIRCLING	940-1 599 (600-1)	940-1½ 599 (600-1½)	940-2 599 (600-2)	940-2 599 (600-2)

SE-1, 07 FEB 2013 to 07 MAR 2013

SE-1, 07 FEB 2013 to 07 MAR 2013