

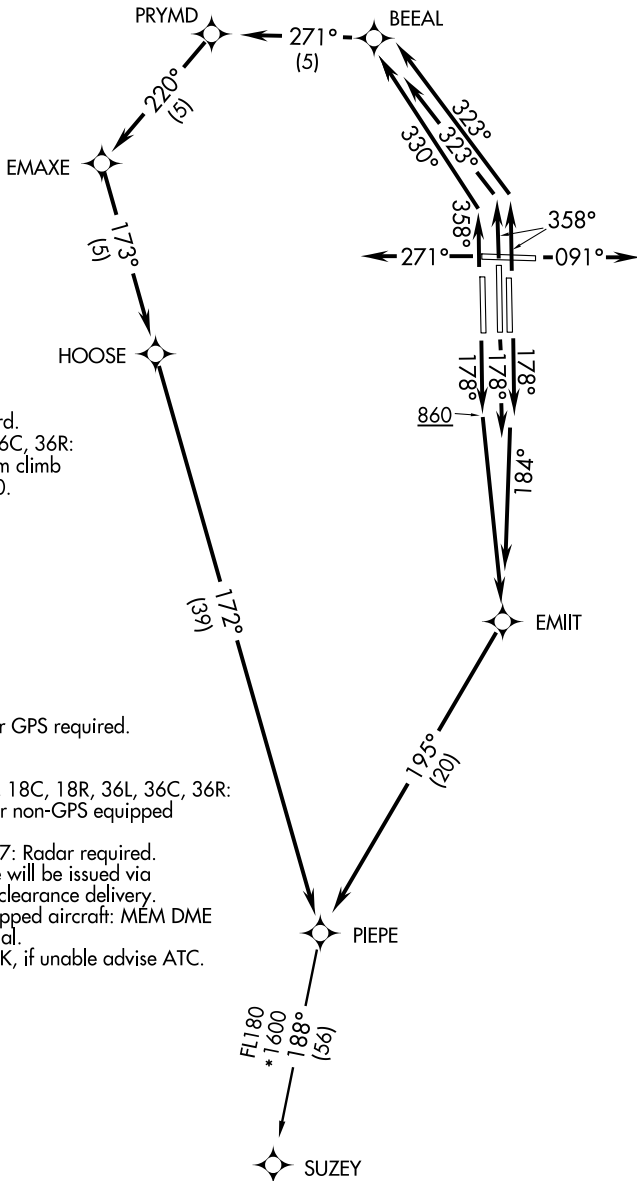
(PIEPE1.PIEPE) 12096

PIEPE ONE DEPARTURE (RNAV)

SL-253 (FAA)

MEMPHIS INTL (MEM)
MEMPHIS, TENNESSEE

ATIS 127.75
 MEMPHIS DEP CON
 124.65 284.7 (176°-355°)
 124.15 385.45 (356°-175°)
 MEMPHIS TOWER
 118.3 257.8 (Rwy 9-27)
 119.7 257.8 (Rwys 18C-36C,
 18L-36R)
 128.425 257.8 (Rwy 18R-36L)
 GND CON
 121.0 379.2 (Rwy 9-27)
 121.9 379.2 (Rwys 18C-36C,
 18L-36R)
 121.65 379.2 (Rwy 18R-36L)
 CLNC DEL 125.2



TAKEOFF MINIMUMS:

Rwys 18L, 18C: Standard.
 Rwys 9, 18R, 27, 36L, 36C, 36R:
 Standard with minimum climb
 of 500' per NM to 860.

- NOTE: DME/DME/IRU or GPS required.
- NOTE: RNAV 1.
- NOTE: Turbojets only.
- NOTE: Takeoff Rwys 18L, 18C, 18R, 36L, 36C, 36R:
Radar required for non-GPS equipped aircraft.
- NOTE: Takeoff Rwys 9, 27: Radar required.
- NOTE: Transponder code will be issued via PDC or Memphis clearance delivery.
- NOTE: For non-GPS equipped aircraft: MEM DME must be operational.
- NOTE: Accelerate to 250K, if unable advise ATC.

(NARRATIVE ON FOLLOWING PAGE)

NOTE: Chart not to scale.

PIEPE ONE DEPARTURE (RNAV)

(PIEPE1.PIEPE) 12096

MEMPHIS, TENNESSEE
MEMPHIS INTL (MEM)

SE-1, 07 FEB 2013 to 07 MAR 2013

SE-1, 07 FEB 2013 to 07 MAR 2013