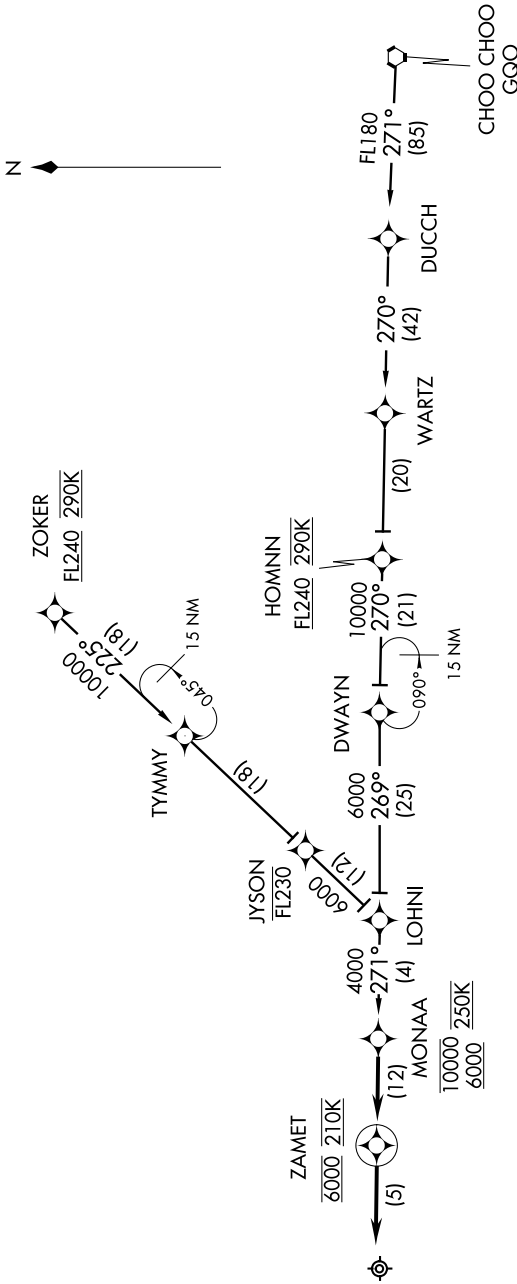


MONAA ONE ARRIVAL (RNAV)

SE-1, 07 FEB 2013 to 07 MAR 2013

MEMPHIS APP CON
125.8 338.3
ATIS 127.75



NOTE: Chart not to scale.

ARRIVAL ROUTE DESCRIPTION

CHOO CHOO TRANSITION (GGO.MONAA1):

HOMNN TRANSITION (HOMNN.MONAA1):

ZOKER TRANSITION (ZOKER.MONAA1):

LANDING RWY 27: From over MONAA on 271° track to cross ZAMET at 6000 at 210K, then on 271° track, expect radar vectors to final approach course.

- NOTE: This STAR authorized by ATC assignment only.
- NOTE: Radar required.
- NOTE: Radar required for procedure entry at HOMNN or ZOKER.
- NOTE: Turbojet aircraft only.
- NOTE: DME/DME/IRU or GPS Required.
- NOTE: RNAV 1.

SE-1, 07 FEB 2013 to 07 MAR 2013