

# MASHH ONE ARRIVAL (RNAV)

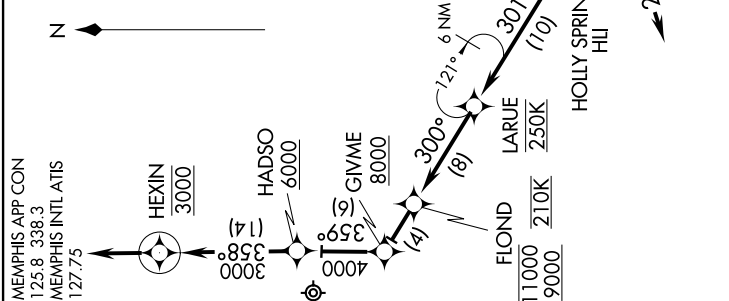
SE-1, 07 FEB 2013 to 07 MAR 2013

## ARRIVAL ROUTE DESCRIPTION

CHOO CHOO TRANSITION (GQO.MASHH1):  
GRAMM TRANSITION (CRAMM.MASHH1):  
VULCAN TRANSITION (VUZ.MASHH1):

LANDING RWYS 18C/18L/18R: From over MASHH on track 284° to HLI VORTAC, then on track 301° to cross LARUE at 250K, then on track 300° to cross FLOND at or above 9000 and at or below 11000 and at 210K, then on track 300° to cross GIVME at or above 8000, then on track 359° to cross HADSO at or above 6000, then on track 358° to cross HEXIN at 3000, then on track 358°, expect radar vectors to final approach course.

LANDING RWYS 36C/36L/36R: From over MASHH on track 271° to cross FASOP at 10000 at 230K, then on track 270°, expect radar vectors to final approach course.



- NOTE: Radar required.
- NOTE: Turbojet aircraft only.
- NOTE: DME/DME/IRU or GPS required.
- NOTE: RNAV 1.
- NOTE: For non-GPS equipped aircraft, UJM DME must be operational.

NOTE: Chart not to scale.

# MASHH ONE ARRIVAL (RNAV)

(MASHH.MASHH1) 12208

SE-1, 07 FEB 2013 to 07 MAR 2013