

MARVELL FOUR ARRIVAL

ST-253 (FAA)

MEMPHIS INTL (MEM)
MEMPHIS, TENNESSEE

SE-1, 07 FEB 2013 to 07 MAR 2013

(NARRATIVE ON FOLLOWING PAGE)

MEMPHIS APP CON
119.1 291.6
ATIS 127.75

- NOTE: DME and Radar required.
- NOTE: Procedure not available for RNAV capable Turbojets.
- NOTE: RNAV capable Turbojets must file the TAMMY RNAV STAR.
- NOTE: Maintain last assigned altitude until cleared to "descend via the MARVELL FOUR," then comply with altitude restrictions as published.

MARVELL
109.6 UJM
Chan 33
N34°34.50' - W90°40.46'

LITTLE ROCK
113.9 LIT
Chan 86

OGONY
N34°03.66'
W91°20.65'
FL210 290K

TEXARKANA
116.3 TKX
Chan 110
N33°30.83' - W92°44.64'
L-17, H-6

EL DORADO
115.5 ELD
Chan 102
N33°15.37' - W92°44.64'
L-17, H-6

GREENVILLE
110.2 GH
Chan 39
N33°31.41'
W90°58.98'
L-18

SIDON
114.7 SGS
Chan 94
N33°27.83' - W90°16.64'
L-18, H-6

MEMPHIS
117.5 MEM
Chan 122
N35°00.91'
W89°58.99'
3000

TWIKL
N34°56.03'
W90°06.72'
11000 210K
9000

JAMEA
N34°49.31'
W90°17.31'
250K

MADDN
N34°43.35'
W90°26.67'
4000

BARFF
N34°24.69'
W90°54.22'
4000

TAMMY
N34°37.05'
W90°36.50'
10000 230K

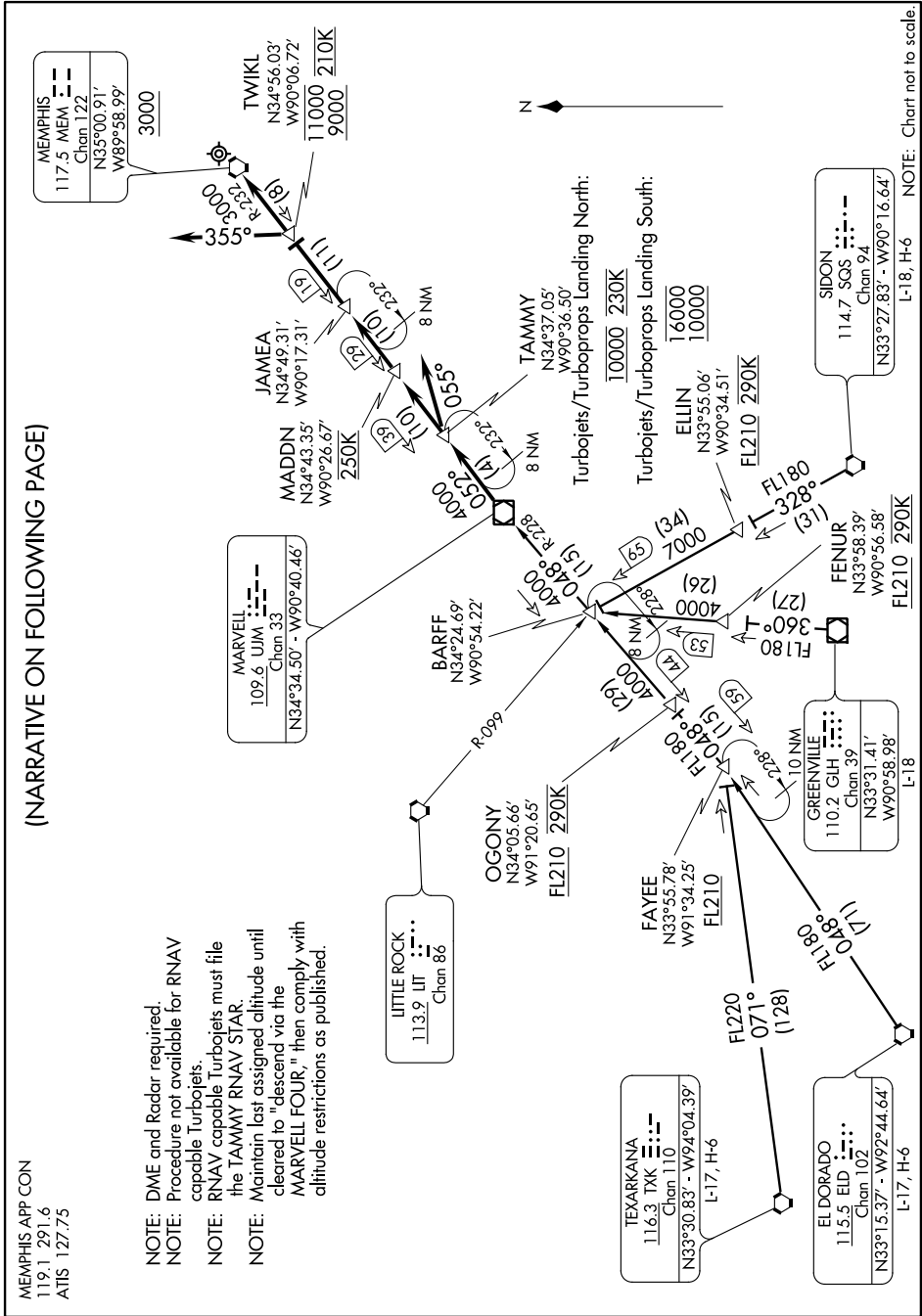
FAYEE
N33°55.78'
W91°34.25'
FL210

EL DORADO
115.5 ELD
Chan 102
N33°15.37' - W92°44.64'
L-17, H-6

TEXARKANA
116.3 TKX
Chan 110
N33°30.83' - W92°44.64'
L-17, H-6

ELLIN
N33°55.06'
W90°34.51'
16000 10000
FL210 290K

FENUR
N33°58.39'
W90°56.58'
FL210 290K



NOTE: Chart not to scale.

SE-1, 07 FEB 2013 to 07 MAR 2013