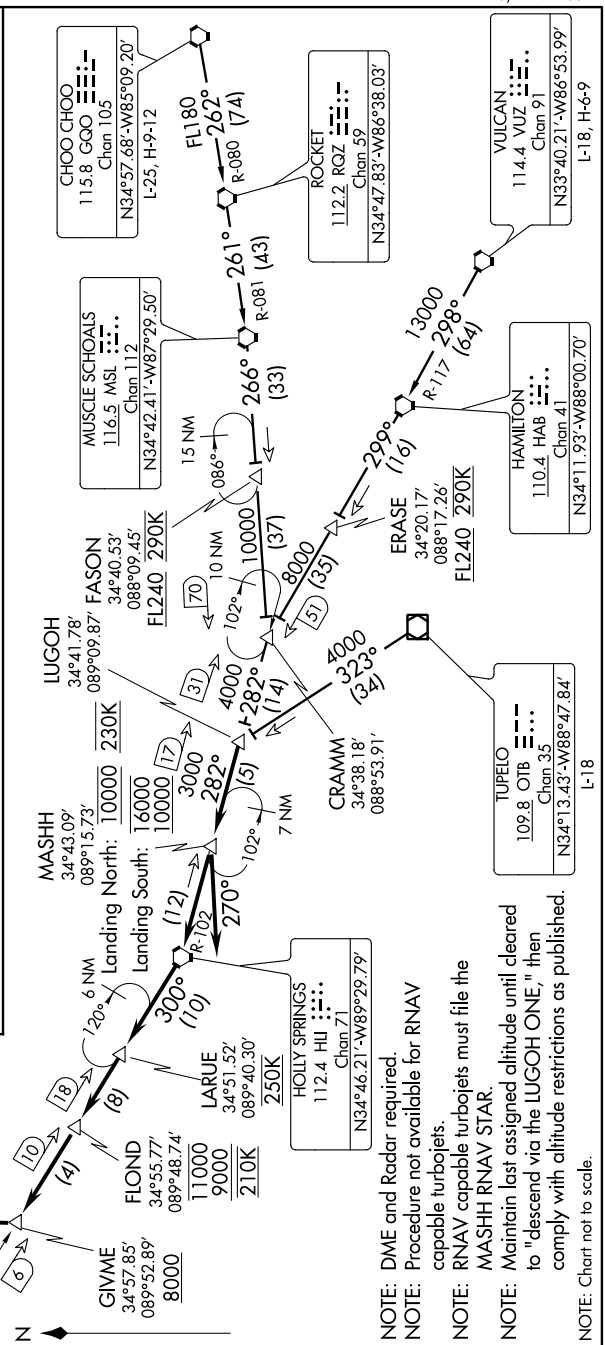
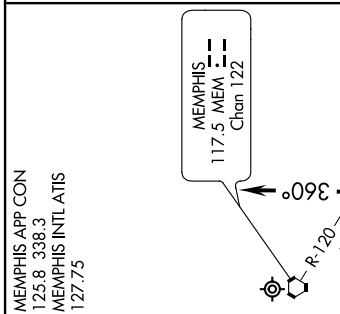


SE-1, 07 FEB 2013 to 07 MAR 2013

CHOO CHOO TRANSITION (GQO.LUGOH1): From over GQO VORTAC on GQO R-262 and RQZ R-080 to RQZ VORTAC, then on RQZ R-261 and MSL R-081 to MSL VORTAC, then on MSL R-266 to CRAMM, then on HLI R-102 to LUGOH, thence...
TUPELO TRANSITION (OTB.LUGOH1): From over OTB VOR/DME on OTB R-323 to LUGOH, thence...
VULCAN TRANSITION (VUZ.LUGOH1): From over VUZ VORTAC on GQO R-298 and HAB R-117 to HAB VORTAC, then on HAB R-299 to CRAMM, then on HLI R-102 to LUGOH, thence...
LANDING NORTH: From over LUGOH on HLI R-102 to cross MASHH at 10000 and 230K, then on heading 270°, expect radar vectors to final approach course.
LANDING SOUTH: From over LUGOH on HLI R-102 to cross MASHH at or above 10000 and at or below 16000, then on HLI R-102 to HLI VORTAC, then on MEM R-120 to cross LARUE at 250K, then on MEM R-120 to cross FLOND at or above 9000 and at or below 11000 and at 210K, then on MEM R-120 to cross GIVME at or above 8000, then on heading 360°, expect radar vectors to final approach course.



SE-1, 07 FEB 2013 to 07 MAR 2013