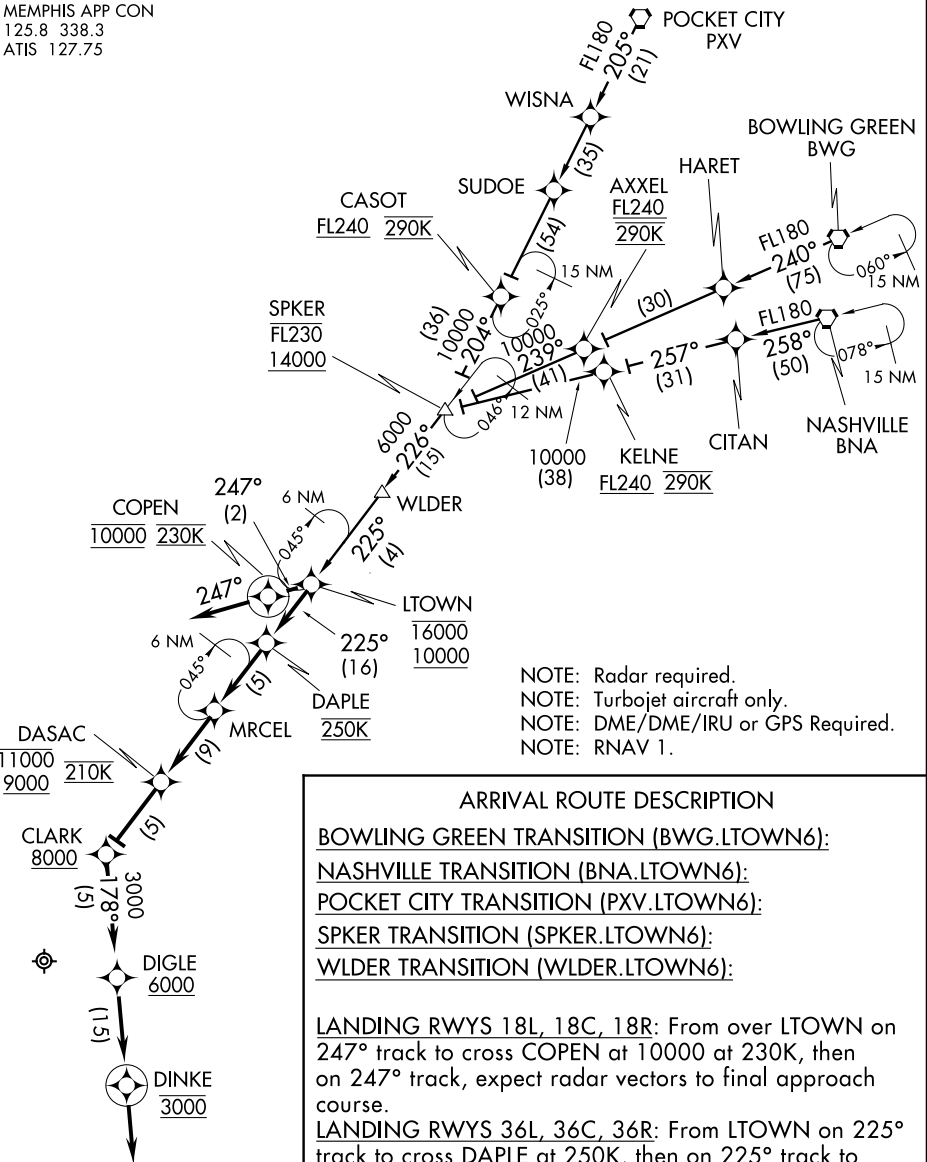


LTOWN SIX ARRIVAL (RNAV)

MEMPHIS APP CON
125.8 338.3
ATIS 127.75



- NOTE: Radar required.
- NOTE: Turbojet aircraft only.
- NOTE: DME/DME/IRU or GPS Required.
- NOTE: RNAV 1.

ARRIVAL ROUTE DESCRIPTION

BOWLING GREEN TRANSITION (BWG.LTOWN6):

NASHVILLE TRANSITION (BNA.LTOWN6):

POCKET CITY TRANSITION (PXV.LTOWN6):

SPKER TRANSITION (SPKER.LTOWN6):

WLDER TRANSITION (WLDER.LTOWN6):

LANDING RWYS 18L, 18C, 18R: From over LTOwn on 247° track to cross COPEN at 10000 at 230K, then on 247° track, expect radar vectors to final approach course.

LANDING RWYS 36L, 36C, 36R: From LTOwn on 225° track to cross DAPLE at 250K, then on 225° track to MRCEL, then on 225° track to cross DASAC at or below 11000 and at or above 9000 at 210K, then on 225° track to cross CLARK at or above 8000, then on 178° track to cross DIGLE at or above 6000, then on 178° track to cross DINKE at 3000, then on 178° track, expect radar vectors to final approach course.

NOTE: Chart not to scale.

SE-1, 07 FEB 2013 to 07 MAR 2013

SE-1, 07 FEB 2013 to 07 MAR 2013