

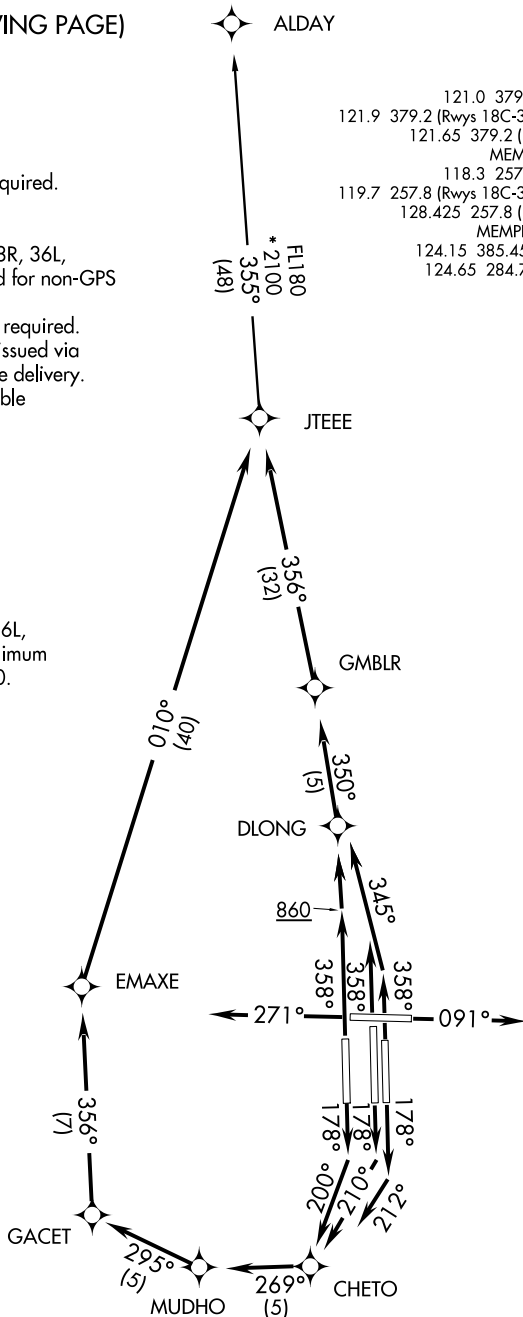
JTEEE ONE DEPARTURE (RNAV)

(NARRATIVE ON FOLLOWING PAGE)

- NOTE: DME/DME/IRU or GPS required.
- NOTE: RNAV 1.
- NOTE: Turbojets only.
- NOTE: Takeoff Rwy 18L, 18C, 18R, 36L, 36C, 36R: Radar required for non-GPS equipped aircraft.
- NOTE: Takeoff Rwy 9, 27-Radar required.
- NOTE: Transponder code will be issued via PDC or Memphis clearance delivery.
- NOTE: Accelerate to 250K, if unable advise ATC.

ATIS
127.75
CLNC DEL
125.2
GND CON
121.0 379.2 (Rwy 9-27)
121.9 379.2 (Rwys 18C-36C, 18L-36R)
121.65 379.2 (Rwy 18R-36L)
MEMPHIS TOWER
118.3 257.8 (Rwy 9-27)
119.7 257.8 (Rwys 18C-36C, 18L-36R)
128.425 257.8 (Rwy 18R-36L)
MEMPHIS DEP CON
124.15 385.45 (356°-175°)
124.65 284.7 (176°-355°)

TAKEOFF MINIMUMS:
Rwys 9, 18L, 18C, 18R, 27, 36L, 36C, 36R: Standard with minimum climb of 500' per NM to 860.



NOTE: Chart not to scale.

JTEEE ONE DEPARTURE (RNAV)

SE-1, 07 FEB 2013 to 07 MAR 2013

SE-1, 07 FEB 2013 to 07 MAR 2013