

LOC I-MEM	APP CRS	Rwy Idg	<b>8946</b>
<b>109.5</b>	<b>091°</b>	TDZE	<b>259</b>
		Apt Elev	<b>341</b>

# ILS or LOC RWY 9

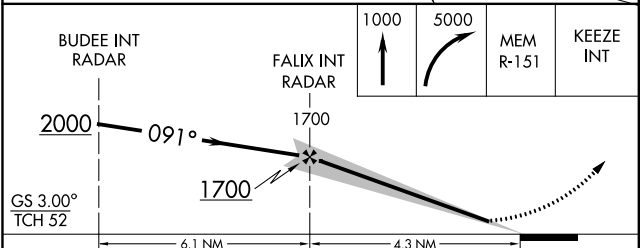
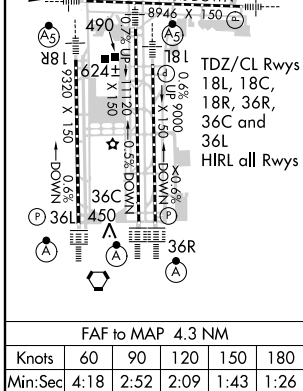
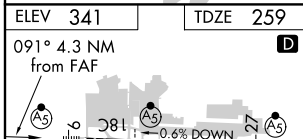
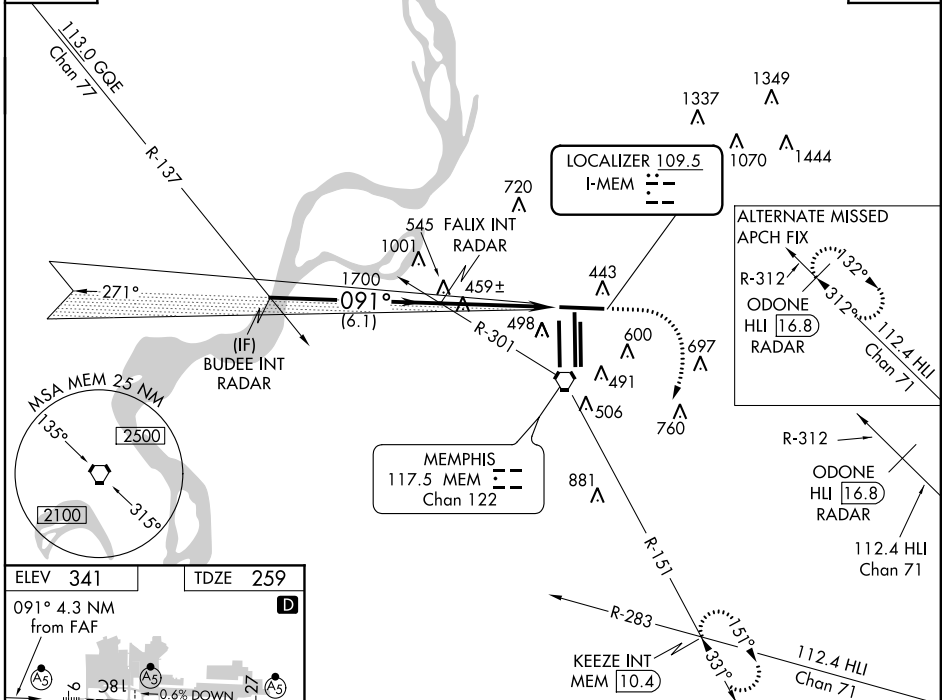
MEMPHIS INTL (MEM)

▼ For inoperative MALSR, increase S-ILS 9 Cat. E visibility to RVR 4000 and S-LOC 9 Cat. E visibility to 1 $\frac{3}{4}$ .

▲ MISSED APPROACH: Climb to 1000 then climbing right turn to 5000 via MEM R-151 to KEEZE INT/MEM 10.4 DME and hold, continue climb-in-hold to 5000.

MEMPHIS APP CON		MEMPHIS TOWER		GND CON	
<b>119.1 291.6</b>	(176°-355°)	(Rwy 9-27)	<b>118.3 257.8</b>	(Rwy 9-27)	<b>121.0 379.2</b>
<b>125.8 338.3</b>	(356°-175°)	(Rwys 18C-36C, 18L-36R)	<b>119.7 257.8</b>	(Rwys 18C-36C, 18L-36R)	<b>121.9 379.2</b>
		(Rwy 18R-36L)	<b>128.425 257.8</b>	(Rwy 18R-36L)	<b>121.65 379.2</b>

ATIS	<b>127.75</b>	<b>RADAR REQUIRED</b>	1449 <span style="border: 1px solid black; padding: 2px;">▲</span> CLNC DEL
			<b>125.2</b>



CATEGORY	A	B	C	D	E
S-ILS 9	466/24 207 (200- $\frac{1}{2}$ )				
S-LOC 9	720/24	461 (400- $\frac{1}{2}$ )	720/40 461 (400- $\frac{3}{4}$ )	720/50 461 (400-1)	720/60 461 (400- $\frac{1}{4}$ )
CIRCLING	940-1	599 (600-1)	940-1 $\frac{1}{2}$ 599 (600- $\frac{1}{2}$ )	940-2 599 (600-2)	1120-2 $\frac{3}{4}$ 779 (800-2 $\frac{3}{4}$ )