

LOC I-JIM 108.7	APP CRS 271°	Rwy Idg TDZE Apt Elev	8946 292 341
---------------------------	------------------------	-----------------------------	---

ILS or LOC RWY 27

MEMPHIS INTL (MEM)

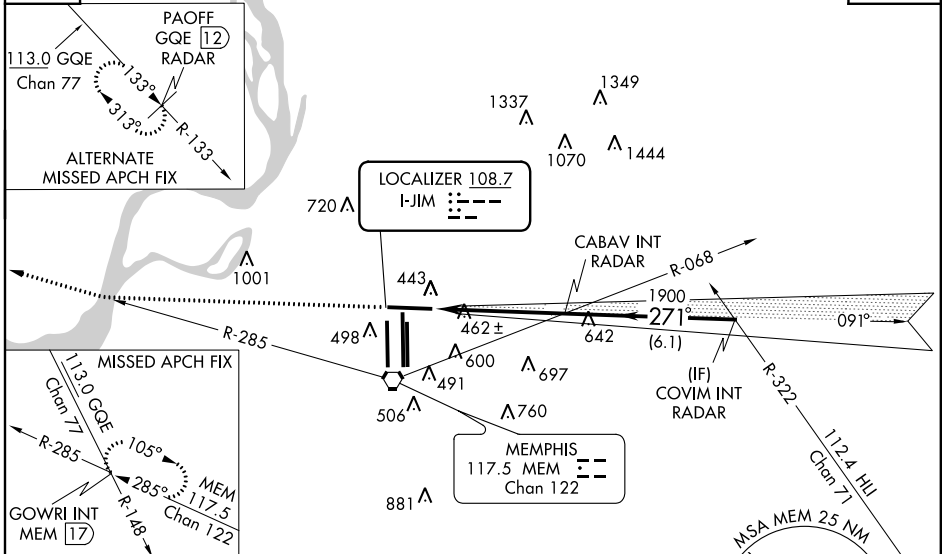
▼ For inoperative MALS, increase S-ILS 27
▲ Cat. E visibility to RVR 4000 and S-LOC 27
 Cat. E visibility to 1½.



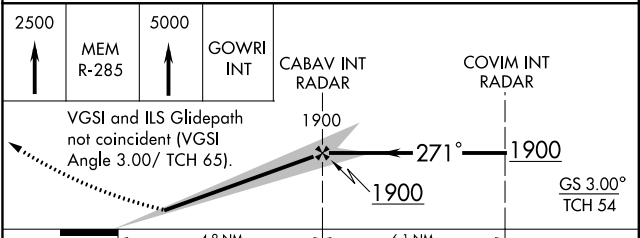
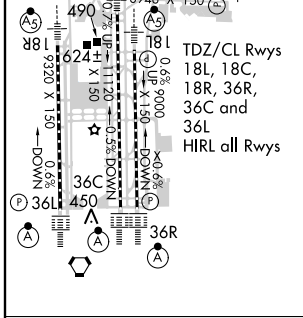
MISSED APPROACH: Climb to 2500 and intercept MEM VORTAC R-285, then continue climb to 5000 via MEM VORTAC R-285 to GOWRI INT/MEM 17 DME and hold, continue climb-in-hold to 5000.

MEMPHIS APP CON		MEMPHIS TOWER		GND CON	
119.1	291.6 (176°-355°)	(Rwy 9-27)	118.3 257.8	(Rwy 9-27)	121.0 379.2
125.8	338.3 (356°-175°)	(Rwys 18C-36C, 18L-36R)	119.7 257.8	(Rwys 18C-36C, 18L-36R)	121.9 379.2
		(Rwy 18R-36L)	128.425 257.8	(Rwy 18R-36L)	121.65 379.2

ATIS 127.75	RADAR REQUIRED	CLNC DEL 125.2
-----------------------	-----------------------	--------------------------



ELEV 341	TDZE 292
271° 4.8 NM from FAF	



FAF to MAP 4.8 NM					
Knots	60	90	120	150	180
Min:Sec	4:48	3:12	2:24	1:55	1:36

CATEGORY	A	B	C	D	E
S-ILS 27	492/24 200 (200-½)				
S-LOC 27	720/24	428 (400-½)	720/40 428 (400-¾)	720/50	428 (400-1)
CIRCLING	940-1	599 (600-1)	940-1½ 599 (600-1½)	940-2	1120-2¾ 779 (800-2¾)

SE-1, 07 FEB 2013 to 07 MAR 2013

SE-1, 07 FEB 2013 to 07 MAR 2013