

LOC I-OOI 109.9	APP CRS 178°	Rwy ldg 9127
		TDZE 295
		Apt Elev 341

ILS or LOC RWY 18R

MEMPHIS INTL (MEM)

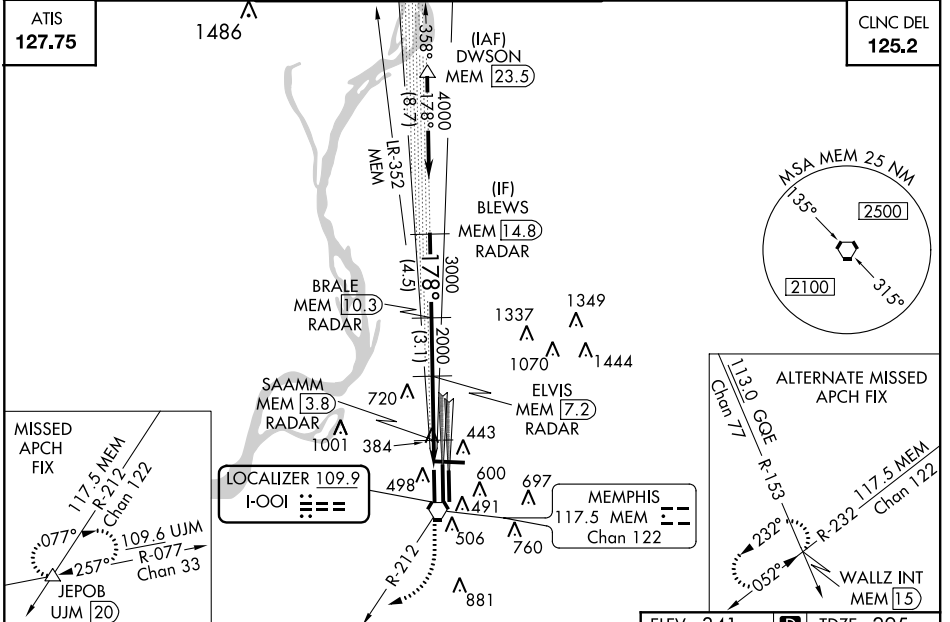
Simultaneous approach authorized with Rwy 18C/L. DME or Radar required. For inoperative MALSR, increase S-ILS 18R Cat E visibility to RVR 4000, S-LOC 18R Cat E visibility to 2, SAAMM Fix minimums, increase S-LOC 18R Cat E visibility to 1½.

MALSR MISSED APPROACH: Climb to 900 then climbing right turn to 5000 via MEM VORTAC R-212 to JEPOB INT/UJM 20 DME and hold

MEMPHIS APP CON		MEMPHIS TOWER		GND CON	
119.1 291.6	(176°-355°)	(Rwy 9-27)	118.3 257.8	(Rwy 9-27)	121.0 379.2
125.8 338.3	(356°-175°)	(Rwys 18C-36C, 18L-36R)	119.7 257.8	(Rwys 18C-36C, 18L-36R)	121.9 379.2
		(Rwy 18R-36L)	128.425 257.8	(Rwy 18R-36L)	121.65 379.2

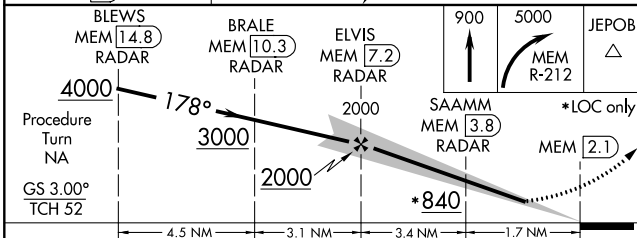
ATIS
127.75

CLNC DEL
125.2

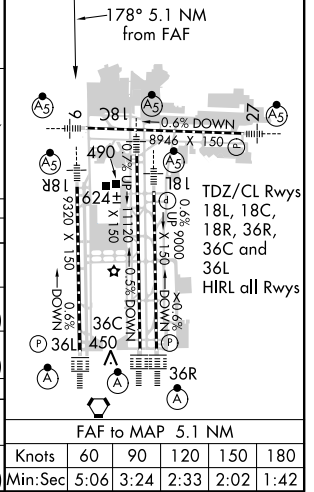


SE-1, 07 FEB 2013 to 07 MAR 2013

SE-1, 07 FEB 2013 to 07 MAR 2013



ELEV 341 TDZE 295



CATEGORY	A	B	C	D	E
S-ILS 18R	495/18 200 (200-½)				495/24 200 (200-½)
S-LOC 18R	840/24	545 (500-½)	840/50 545 (500-1)	840/60 545 (500-1½)	840-1½ 545 (500-1½)
CIRCLING	940-1	599 (600-1)	940-1½ 599 (600-1½)	940-2 599 (600-2)	1120-2¾ 779 (800-2¾)
SAAMM FIX MINIMUMS					
S-LOC 18R	700/24	405 (400-½)	700/40 405 (400-¾)	700/50 405 (400-1)	
CIRCLING	940-1	599 (600-1)	940-1½ 599 (600-1½)	940-2 599 (600-2)	1120-2¾ 779 (800-2¾)

FAF to MAP 5.1 NM	Knots	60	90	120	150	180
	Min:Sec	5:06	3:24	2:33	2:02	1:42