


LOC I-SDU <b>111.95</b>	APP CRS <b>178°</b>	Rwy ldg TDZE Apt Elev	<b>11120</b> <b>290</b> <b>341</b>
----------------------------	------------------------	-----------------------------	--

# ILS or LOC RWY 18C

MEMPHIS INTL (MEM)

**▼** For inoperative MALS/R, increase S-ILS 18C all  
**▲** Cats visibility to 1¼ mile. DME or Radar required.  
 Simultaneous approach authorized with Rwy 18R.

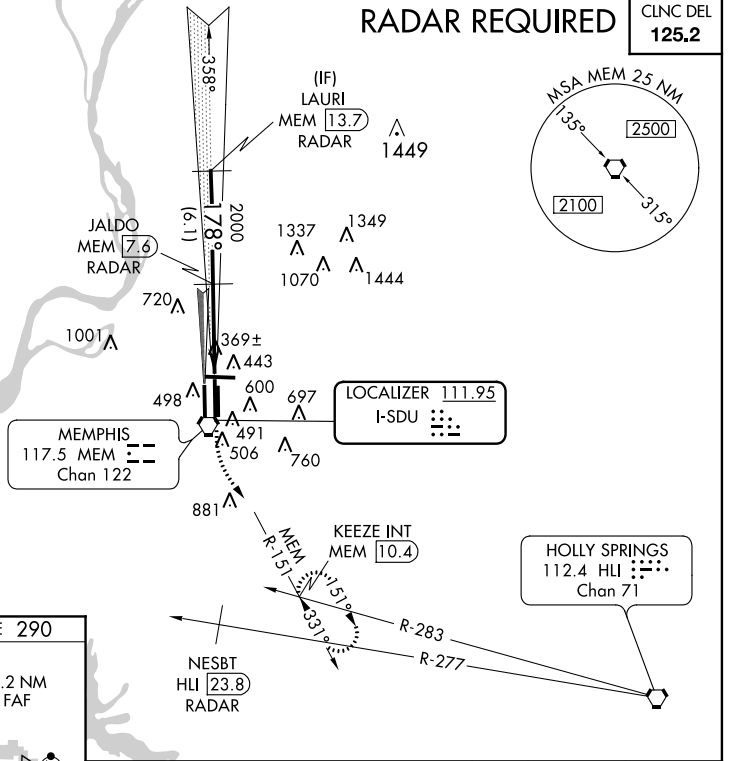
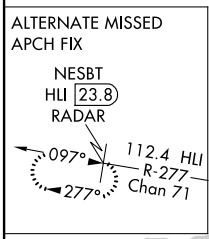
**MALS/R**  MISSED APPROACH: Climb to 900 then climbing left turn to 5000 via MEM VORTAC R-151 to KEEZE INT/MEM 10.4 DME and hold, continue climb-in-hold to 5000.

MEMPHIS APP CON <b>119.1 291.6</b> (176°-355°) <b>125.8 338.3</b> (356°-175°)	MEMPHIS TOWER (Rwy 9-27) <b>118.3 257.8</b> (Rwys 18C-36C, 18L-36R) <b>119.7 257.8</b> (Rwy 18R-36L) <b>128.425 257.8</b>	GND CON (Rwy 9-27) <b>121.0 379.2</b> (Rwys 18C-36C, 18L-36R) <b>121.9 379.2</b> (Rwy 18R-36L) <b>121.65 379.2</b>
---	--	---

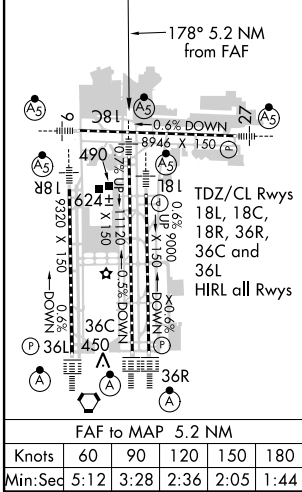
ATIS  
**127.75**

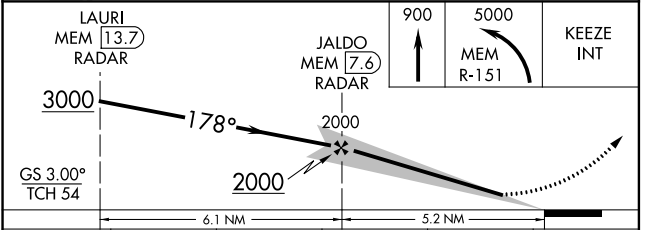
**RADAR REQUIRED**

CLNC DEL  
**125.2**



ELEV 341 **D** TDZE 290



LAURI MEM 13.7 RADAR JALDO MEM 7.6 RADAR 900 5000 KEEZE INT MEM R-151					
	CATEGORY S-ILS 18C S-LOC 18C CIRCLING	A	B	C	D
	640/40 350 (300-¾)				
	860/24	570 (600-½)	860/50 570 (600-1)	860/60 570 (600-1¼)	860-1½ 570 (600-1½)
	940-1 599 (600-1)	940-1 599 (600-1)	940-1½ 599 (600-1½)	940-2 599 (600-2)	1120-2¾ 779 (800-2¾)

SE-1, 07 FEB 2013 to 07 MAR 2013

SE-1, 07 FEB 2013 to 07 MAR 2013