

LOC/DME I-MYO 111.35 Chan 50 (Y)	APP CRS 360°	Rwy Idg TDZE Apt Elev	9000 335 341
---	------------------------	-----------------------------	---

ILS RWY 36R (CAT III)

MEMPHIS INTL (MEM)

Simultaneous approach authorized with Rwy 36L.
DME or Radar required.

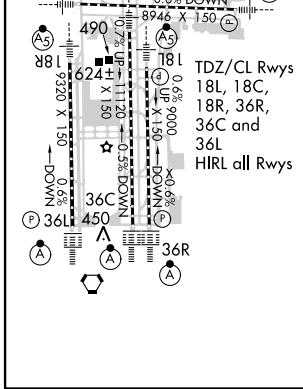
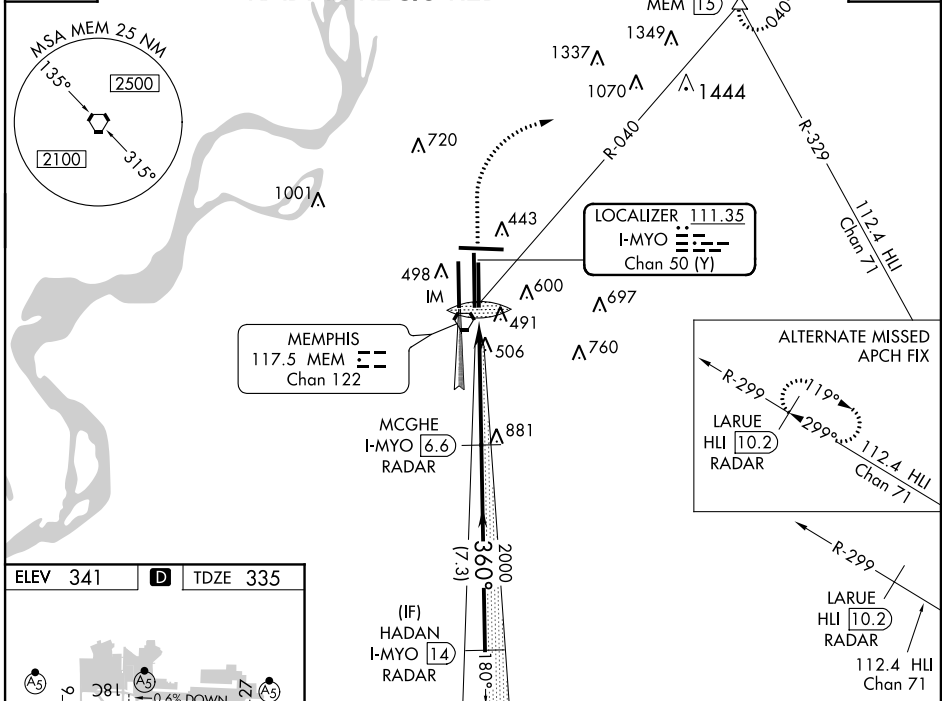
MISSED APPROACH: Climb to 1000 then climbing right turn to 5000 via heading 070° and MEM VORTAC R-040 to OROCU INT/MEM 15 DME and hold, continue climb-in-hold to 5000.

MEMPHIS APP CON	MEMPHIS TOWER	GND CON
119.1 291.6 (176°-355°)	(Rwy 9-27) 118.3 257.8	(Rwy 9-27) 121.0 379.2
125.8 338.3 (356°-175°)	(Rwys 18C-36C, 18L-36R) 119.7 257.8	(Rwys 18C-36C, 18L-36R) 121.9 379.2
	(Rwy 18R-36L) 128.425 257.8	(Rwy 18R-36L) 121.65 379.2

ATIS
127.75

RADAR REQUIRED

CLNC DEL
125.2



1000	5000	MEM R-040	OROCU	MCGHE I-MYO (6.6) RADAR	HADAN I-MYO (14) RADAR
↑	hdg 070°		△	2000	3000
335 MSL		IM 437		2000	3000
VGSI and ILS glidepath not coincident (VGSI Angle 3.00/ TCH 69).					
1131'	844'	4.8 NM	7.3 NM		

CATEGORY	A	B	C	D
S-ILS 36R		CAT IIIa	RVR07	
S-ILS 36R		CAT IIIb	RVR03	
S-ILS 36R		CAT IIIc	NA	

CATEGORY III ILS - SPECIAL AIRCREW & AIRCRAFT CERTIFICATION REQUIRED

SE-1, 07 FEB 2013 to 07 MAR 2013

SE-1, 07 FEB 2013 to 07 MAR 2013