

LOC/DME I-OHN 108.9 Chan 26	APP CRS 360°	Rwy Idg 9320 TDZE 321 Apt Elev 341
--	------------------------	--

ILS RWY 36L (CAT III)

MEMPHIS INTL (MEM)

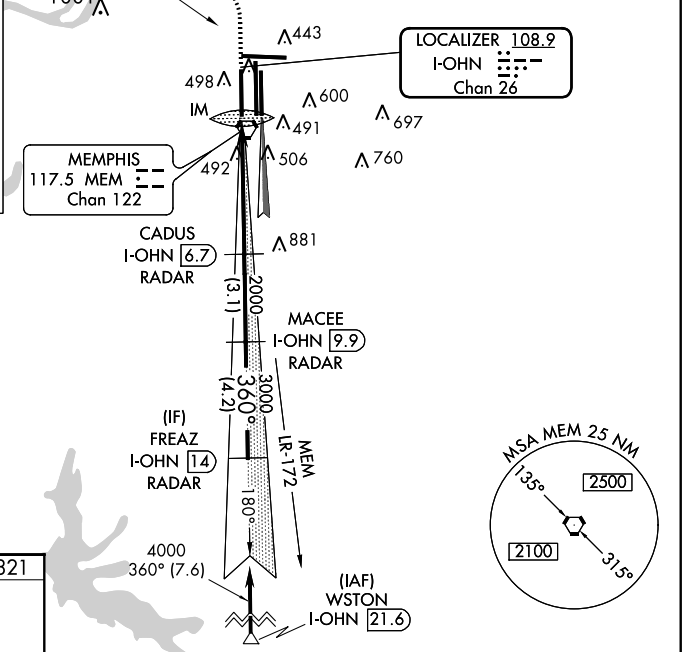
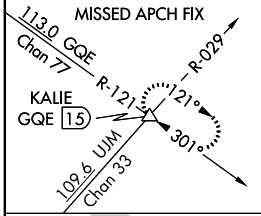
Simultaneous approach authorized with runway 36C/R.
DME or Radar required.



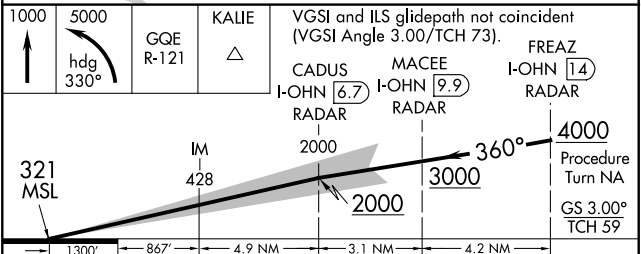
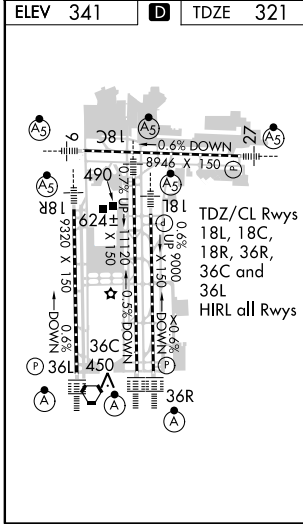
MISSED APPROACH: Climb to 1000 then climbing left turn to 5000 via heading 330° and GQE VOR/DME R-121 to KALIE INT/GQE 15 DME and hold, continue climb-in-hold to 5000.

MEMPHIS APP CON		MEMPHIS TOWER		GND CON	
119.1	291.6 (176°-355°)	(Rwy 9-27) 118.3	257.8	(Rwy 9-27) 121.0	379.2
125.8	338.3 (356°-175°)	(Rwys 18C-36C, 18L-36R) 119.7	257.8	(Rwys 18C-36C, 18L-36R) 121.9	379.2
		(Rwy 18R-36L) 128.425	257.8	(Rwy 18R-36L) 121.65	379.2

ATIS 127.75	113.0 GQE Chan 77	R-121	Λ 720	CLNC DEL 125.2
-----------------------	-------------------	-------	-------	--------------------------



ELEV 341	D	TDZE 321
----------	----------	----------



CATEGORY	A	B	C	D
S-ILS 36L		CAT IIIa	RVR 07	
S-ILS 36L		CAT IIIb	RVR 03	
S-ILS 36L		CAT IIIc	NA	

CATEGORY III ILS - SPECIAL AIRCREW & AIRCRAFT CERTIFICATION REQUIRED

SE-1, 07 FEB 2013 to 07 MAR 2013

SE-1, 07 FEB 2013 to 07 MAR 2013