

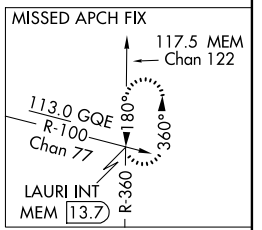
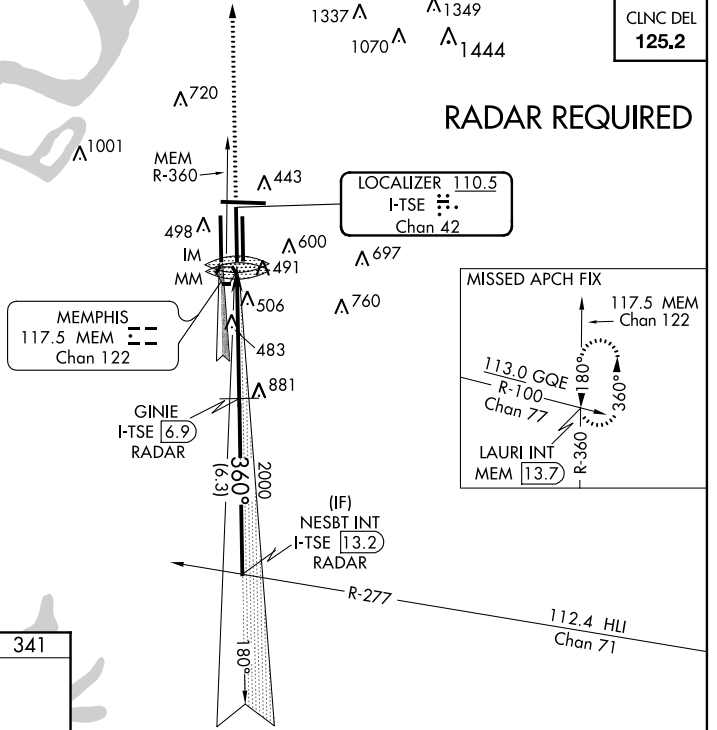
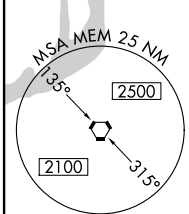
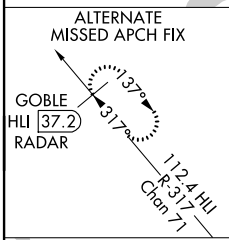
LOC/DME I-TSE <b>110.5</b> Chan <b>42</b>	APP CRS <b>360°</b>	Rwy Idg <b>11120</b> TDZE <b>341</b> Apt Elev <b>341</b>
---	------------------------	--

# ILS RWY 36C (CAT II)

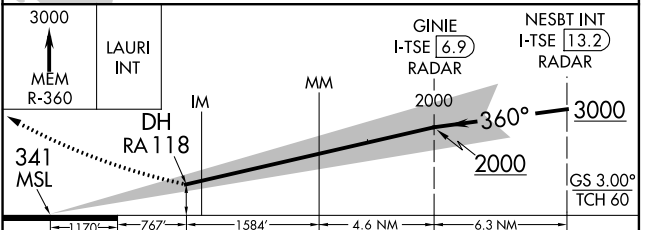
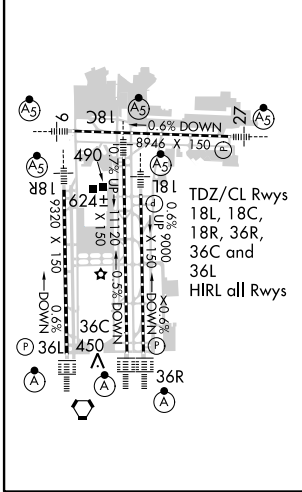
MEMPHIS INTL (MEM)

MEMPHIS APP CON <b>119.1 291.6</b> (176°-355°) <b>125.8 338.3</b> (356°-175°)	MEMPHIS TOWER (Rwy 9-27) <b>118.3 257.8</b> (Rwys 18C-36C, 18L-36R) <b>119.7 257.8</b> (Rwy 18R-36L) <b>128.425 257.8</b>		GND CON (Rwy 9-27) <b>121.0 379.2</b> (Rwys 18C-36C, 18L-36R) <b>121.9 379.2</b> (Rwy 18R-36L) <b>121.65 379.2</b>
	DME or Radar required. Simultaneous approach authorized with Rwy 36L.		
	ALSF-2 		

ATIS <b>127.75</b>	1337 $\Delta$ 1070 $\Delta$ $\Delta$ 720 $\Delta$ 1349 $\Delta$ 1444	CLNC DEL <b>125.2</b>
-----------------------	--	--------------------------



ELEV <b>341</b>	<b>D</b>	TDZE <b>341</b>
-----------------	----------	-----------------



CATEGORY	A	B	C	D
S-ILS 36C	RA 118/12		100 DA 441	

**CATEGORY II ILS - SPECIAL AIRCREW & AIRCRAFT CERTIFICATION REQUIRED**

SE-1, 07 FEB 2013 to 07 MAR 2013

SE-1, 07 FEB 2013 to 07 MAR 2013