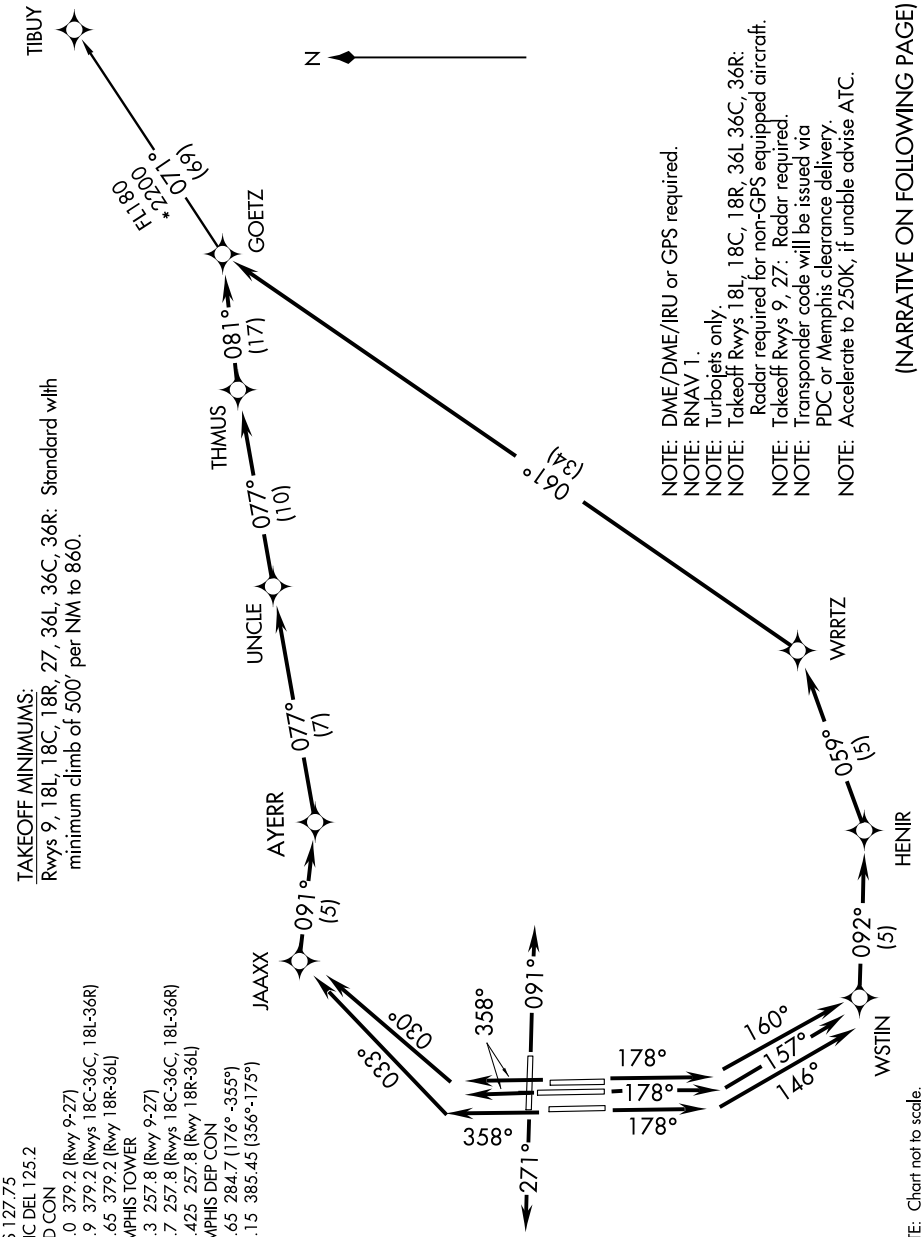


# GOETZ ONE DEPARTURE (RNAV)

SE-1, 07 FEB 2013 to 07 MAR 2013

**TAKEOFF MINIMUMS:**  
Rwys 9, 18L, 18C, 18R, 27, 36L, 36C, 36R: Standard with  
minimum climb of 500' per NM to 860.

- ATIS 127.75
- CLNC DEL 125.2
- GND CON
- 121.0 379.2 (Rwy 9-27)
- 121.9 379.2 (Rwys 18C-36C, 18L-36R)
- 121.65 379.2 (Rwy 18R-36L)
- MEMPHIS TOWER
- 118.3 257.8 (Rwy 9-27)
- 119.7 257.8 (Rwys 18C-36C, 18L-36R)
- 128.425 257.8 (Rwy 18R-36L)
- MEMPHIS DEP CON
- 124.65 284.7 (176° -355°)
- 124.15 385.45 (056°-175°)



- NOTE: DME/DME/IRU or GPS required.
- NOTE: RNAV 1.
- NOTE: Turbojets only.
- NOTE: Takeoff Rwys 18L, 18C, 18R, 36L, 36C, 36R: Radar required for non-GPS equipped aircraft.
- NOTE: Takeoff Rwys 9, 27: Radar required.
- NOTE: Transponder code will be issued via PDC or Memphis clearance delivery.
- NOTE: Accelerate to 250K, if unable advise ATC.

(NARRATIVE ON FOLLOWING PAGE)

SE-1, 07 FEB 2013 to 07 MAR 2013

NOTE: Chart not to scale.