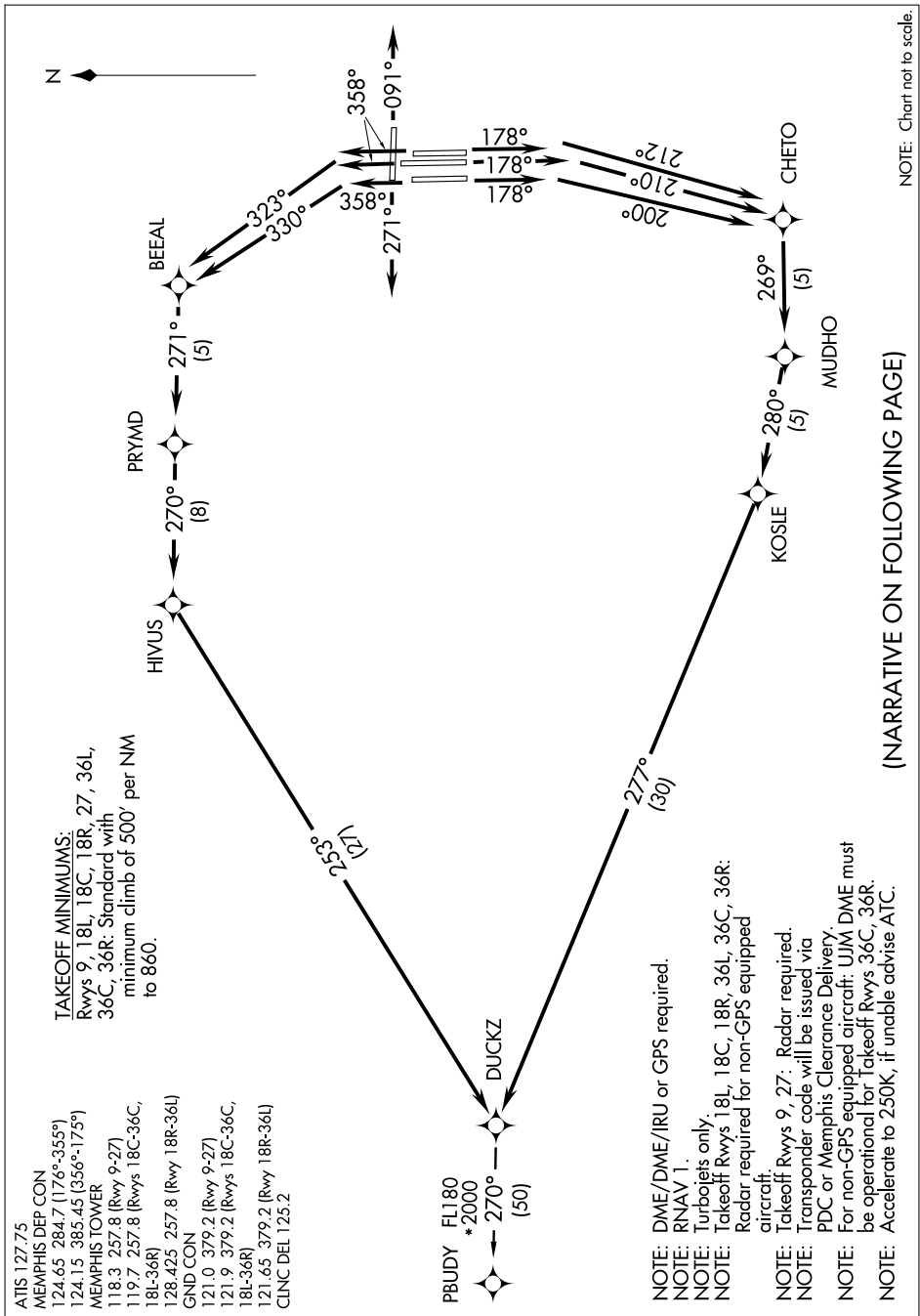


SE-1, 07 FEB 2013 to 07 MAR 2013



NOTE: Chart not to scale.

TAKEOFF MINIMUMS:
 Rwy 9, 18L, 18C, 18R, 27, 36L,
 36C, 36R: Standard with
 minimum climb of 500' per NM
 to 860.

ATIS 127.75
 MEMPHIS DEP CON
 124.65 284.7 (176°-355°)
 124.15 385.45 (356°-175°)
 MEMPHIS TOWER
 118.3 257.8 (Rwy 9-27)
 119.7 257.8 (Rwys 18C-36C,
 18L-36R)
 128.425 257.8 (Rwy 18R-36L)
 GND CON
 121.0 379.2 (Rwy 9-27)
 121.9 379.2 (Rwys 18C-36C,
 18L-36R)
 121.65 379.2 (Rwy 18R-36L)
 CLNC DEL 125.2

PBUDY FL180
 +2000
 → 270°
 (50)

NOTE: DME/DME/IRU or GPS required.
 NOTE: RNAV 1.
 NOTE: Turboprops only.
 NOTE: Takeoff Rwy 18L, 18C, 18R, 36L, 36C, 36R:
 Radar required for non-GPS equipped
 aircraft.
 NOTE: Takeoff Rwy 9, 27: Radar required.
 NOTE: Transponder code will be issued via
 PDC or Memphis Clearance Delivery.
 NOTE: For non-GPS equipped aircraft: UJM DME must
 be operational for Takeoff Rwy 36C, 36R.
 NOTE: Accelerate to 250K, if unable advise ATC.

(NARRATIVE ON FOLLOWING PAGE)