

CONDR ONE ARRIVAL (RNAV)

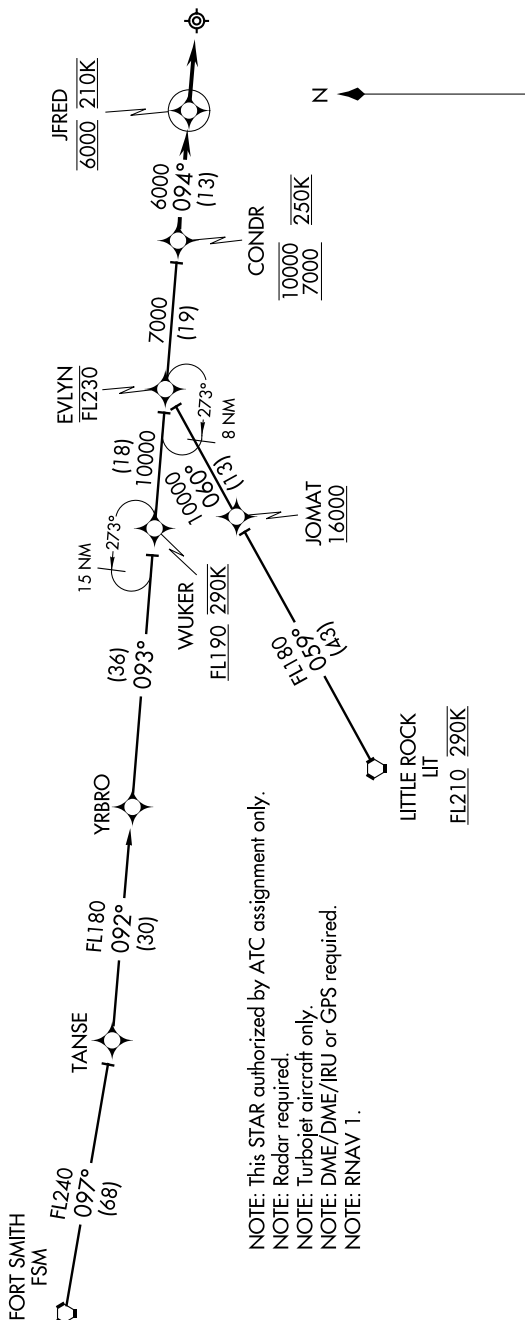
SE-1, 07 FEB 2013 to 07 MAR 2013

ARRIVAL ROUTE DESCRIPTION

FORT SMITH TRANSITION (FSM.CONDR1):
LITTLE ROCK TRANSITION (LIT.CONDR1):

LANDING RWY 9: From over CONDR on 094° track to cross JFRED at 6000 at 210K, then on 094° track, expect radar vectors to final approach course.

MEMPHIS APP CON
119.1 291.6
MEMPHIS INTL ATIS
127.75



NOTE: This STAR authorized by ATC assignment only.
NOTE: Radar required.
NOTE: Turbojet aircraft only.
NOTE: DME/DME/IRU or GPS required.
NOTE: RNAV 1.

LITTLE ROCK
LIT
FL210 290K

NOTE: Chart not to scale.

SE-1, 07 FEB 2013 to 07 MAR 2013