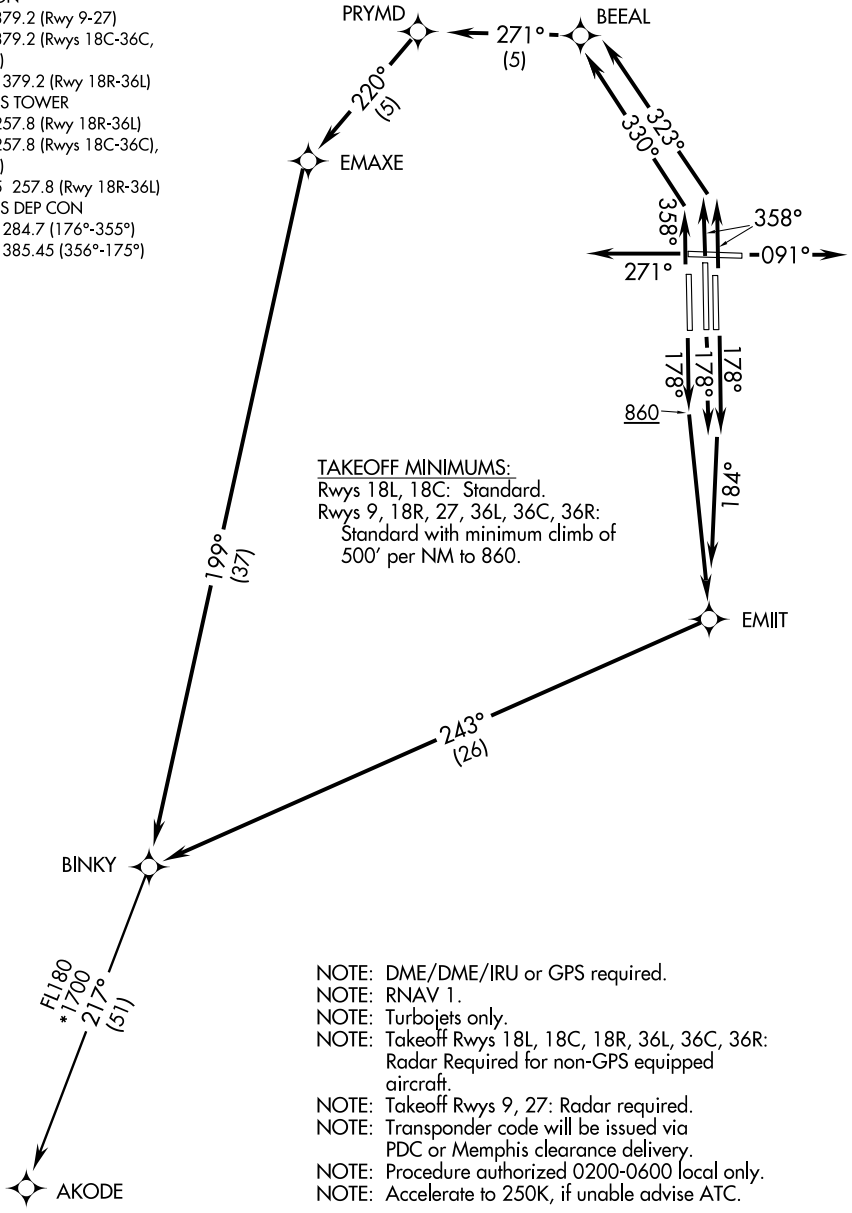


# BINKY ONE DEPARTURE (RNAV)

ATIS 127.75  
 CLNC DEL 125.2  
 GND CON  
 121.0 379.2 (Rwy 9-27)  
 121.9 379.2 (Rwys 18C-36C,  
 18L-36R)  
 121.65 379.2 (Rwy 18R-36L)  
 MEMPHIS TOWER  
 118.3 257.8 (Rwy 18R-36L)  
 119.7 257.8 (Rwys 18C-36C),  
 18L-36R)  
 128.425 257.8 (Rwy 18R-36L)  
 MEMPHIS DEP CON  
 124.65 284.7 (176°-355°)  
 124.15 385.45 (356°-175°)



SE-1, 07 FEB 2013 to 07 MAR 2013

SE-1, 07 FEB 2013 to 07 MAR 2013

NOTE: Chart not to scale.

(NARRATIVE ON FOLLOWING PAGE)